

WAAS CH <b>86741</b> <b>W28A</b>	APP CRS <b>280°</b>	Rwy lgt <b>5000</b> TDZE <b>19</b> Apt Elev <b>22</b>
----------------------------------------	------------------------	-------------------------------------------------------------

# RNAV (GPS) RWY 28

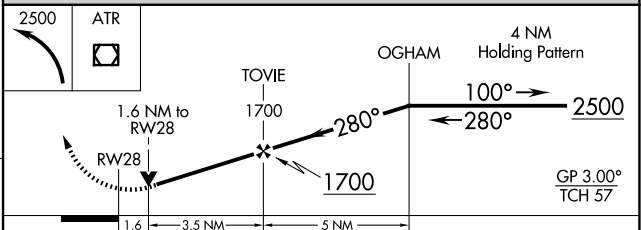
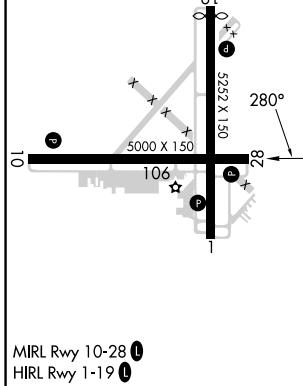
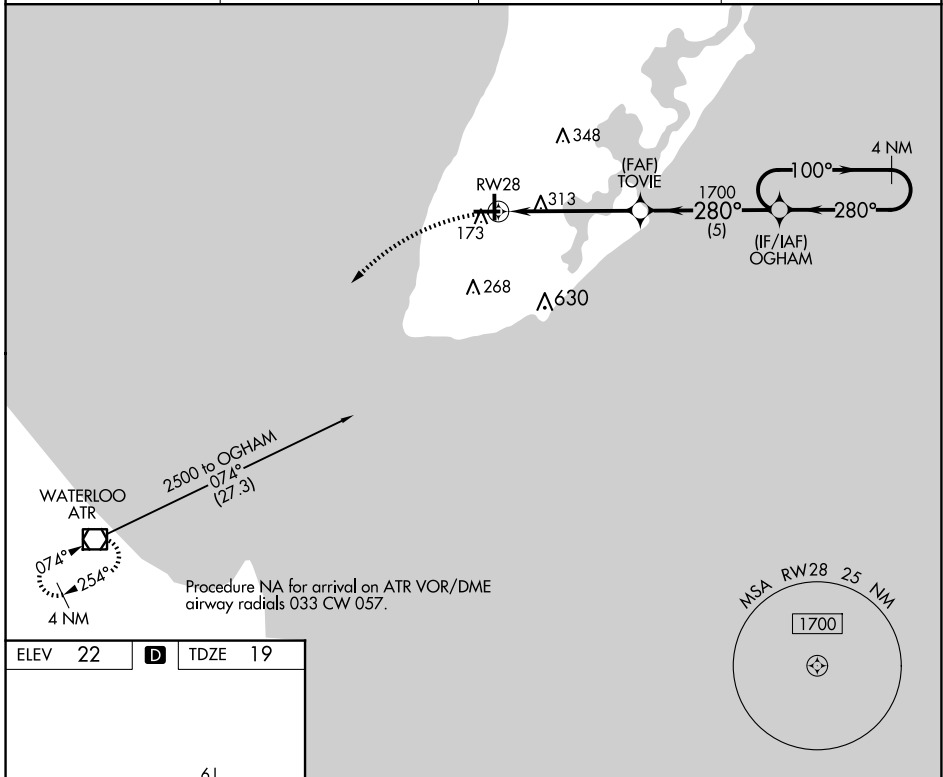
CAPE MAY COUNTY (WWD)

RNP APCH - GPS.

**▼** For uncompensated Baro-VNAV systems, LNAV/VNAV NA below -15° C or above 54° C. Circling NA for Cats C and D northeast of Rwy 19 and 28. Rwy 28 helicopter visibility reduction below ¼ SM NA. Circling Rwy 1 NA at night.

**MISSED APPROACH:** Climbing left turn to 2500 direct ATR VOR/DME and hold.

AWOS-3PT <b>118.275</b>	ATLANTIC CITY APP CON <b>124.6 327.125</b>	CLNC DEL <b>121.7</b>	UNICOM <b>122.7 (CTAF) 1</b>
----------------------------	-----------------------------------------------	--------------------------	---------------------------------



CATEGORY	A	B	C	D
LPV DA		665-2½	646 (700-2½)	
LNAV/VNAV DA		634-2½	615 (700-2½)	
LNAV MDA	580-1	561 (600-1)	580-1½	561 (600-1½)
<b>C</b> CIRCLING	580-1 558 (600-1)	620-1 598 (600-1)	620-1½ 598 (600-1½)	980-3 958 (1000-3)

NE-2, 15 MAY 2025 to 12 JUN 2025

NE-2, 15 MAY 2025 to 12 JUN 2025