

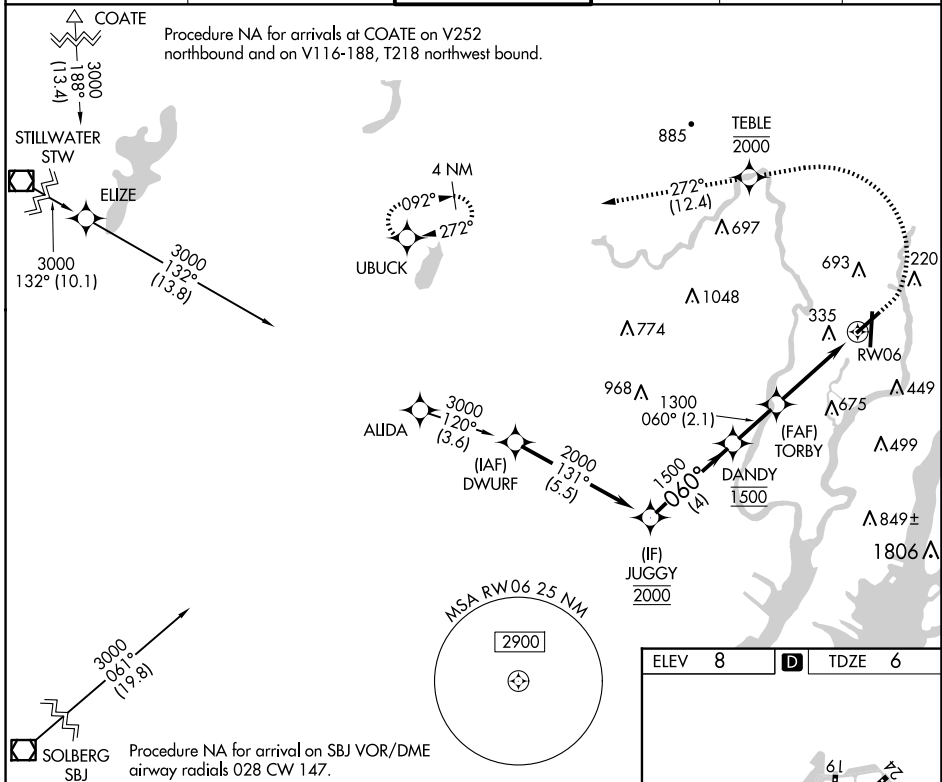
WAAS CH 65707 W06A	APP CRS 060°	Rwy Idg TDZE Apt Elev	6014 6 8
--	------------------------	-----------------------------	-------------------------------------

RNAV (GPS) Y RWY 6

TETERBORO (TEB)

RNP APCH - GPS. RADAR required.	MALSR 	MISSED APPROACH: Climb to 1000, then climbing left turn to 2000 direct TEBLE, cross TEBLE at or below 2000, then climb to 3000 on track 272° to UBUCK and hold.
<p>⚠ Circling NA for Cats B, C, and D northwest of Rwy 6 and 19. For inop ALS, increase LPV all Cats visibility to RVR 5500 and increase LNAV Cats C/D visibility to 2½ SM.</p>		

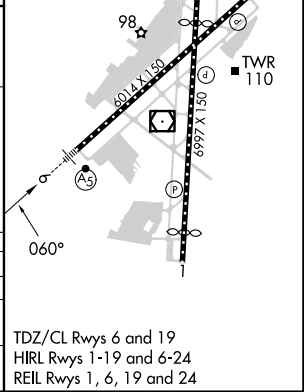
D-ATIS 114.2 132.85	NEWARK APP CON 127.6 379.9	TETERBORO TOWER 119.5	GND CON 121.9	CLNC DEL 128.05	CPDLC
-------------------------------	--------------------------------------	---------------------------------	-------------------------	---------------------------	-------



NE-2, 15 MAY 2025 to 12 JUN 2025

NE-2, 15 MAY 2025 to 12 JUN 2025

ELEV 8	D	TDZE 6			
JUGGY	DANDY	TORBY	TEBLE	3000	UBUCK
2000	1500	1300	2000	↑	↑
GP 3.00° TCH 53	060°	1300	2000	↑	↑
4 NM	2.1 NM	1.6 NM	2.3 NM	↑	↑
CATEGORY	A	B	C	D	
LPV DA	369/35		363 (400-¾)		
LNAV MDA	800/24 794 (800-½)	800/40 794 (800-¾)	800-1¼ 794 (800-1¼)		
CIRCLING	800-1 792 (800-1)	800-1¼ 792 (800-1¼)	820-2½ 812 (900-2½)	1040-3 1032 (1100-3)	



TDZ/CL Rwy 6 and 19
HIRL Rwy 1-19 and 6-24
REIL Rwy 1, 6, 19 and 24