

LOC/DME I-TJL 110.15 Chan 38 (Y)	APP CRS 195°	Rwy Idg TDZE Apt Elev	6230 6 8
--	------------------------	-----------------------------	-------------------------------------

ILS or LOC RWY 19

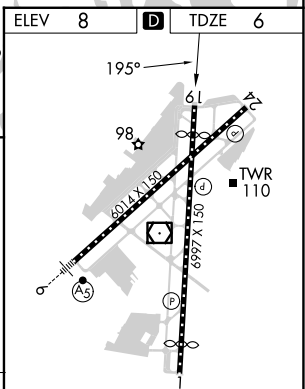
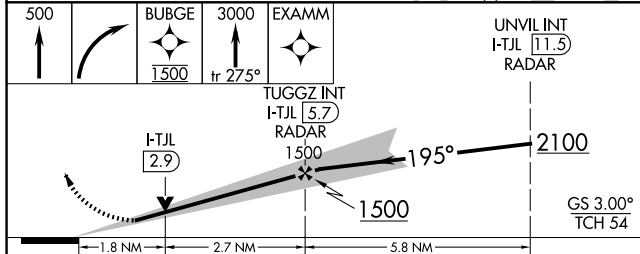
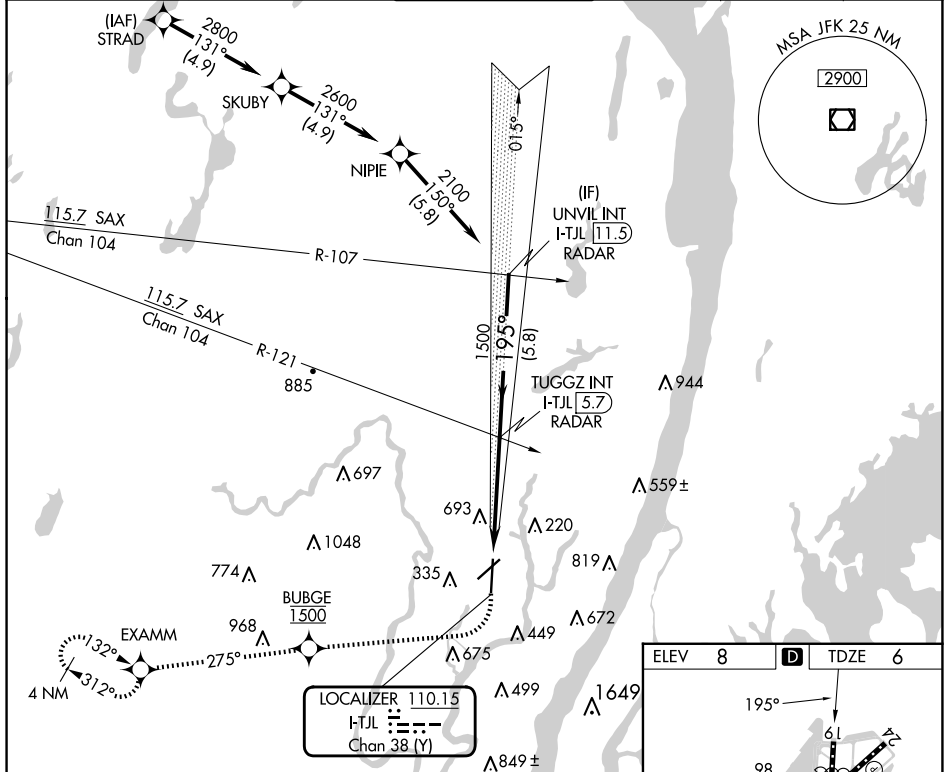
TETERBORO (TEB)

RNP APCH - GPS. RADAR required.

MISSED APPROACH: Climb to 500 then climbing right turn direct BUBGE, cross BUBGE at 1500, then climb to 3000 on track 275° to EXAMM and hold, continue climb-in-hold to 3000.

⚠️ Circling NA for Cats B, C, D northwest of Rwy 6-19.

D-ATIS 114.2 132.85	NEWARK APP CON 127.6 379.9	TETERBORO TOWER 119.5	GND CON 121.9	CLNC DEL 128.05	CPDLC
-------------------------------	--------------------------------------	---------------------------------	-------------------------	---------------------------	-------



ELEV 8	TDZE 6				
500	BUBGE 1500	EXAMM 3000	UNVIL INT I-TJL [11.5] RADAR		
TUGGZ INT I-TJL [5.7] RADAR		I-TJL [2.9]			
CATEGORY	A	B	C	D	
S-ILS 19	241-3/4		235 (300-3/4)		
S-LOC 19	640-1 634 (700-1)		640-1 3/4 634 (700-1 3/4)		
C CIRCLING	760-1 752 (800-1)		820-2 1/2 1040-3 812 (900-2 1/2) 1032 (1100-3)		
TDX/CL Rwys 6 and 19		REIL Rwys 1, 6, 19 and 24			
HIRL Rwys 1-19 and 6-24		FAF to MAP 4.5 NM			
Knots	60	90	120	150	180
Min:Sec	4:30	3:00	2:15	1:48	1:30

NE-2, 15 MAY 2025 to 12 JUN 2025

NE-2, 15 MAY 2025 to 12 JUN 2025