

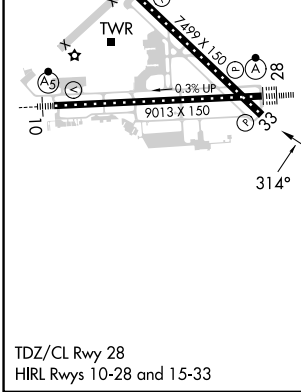
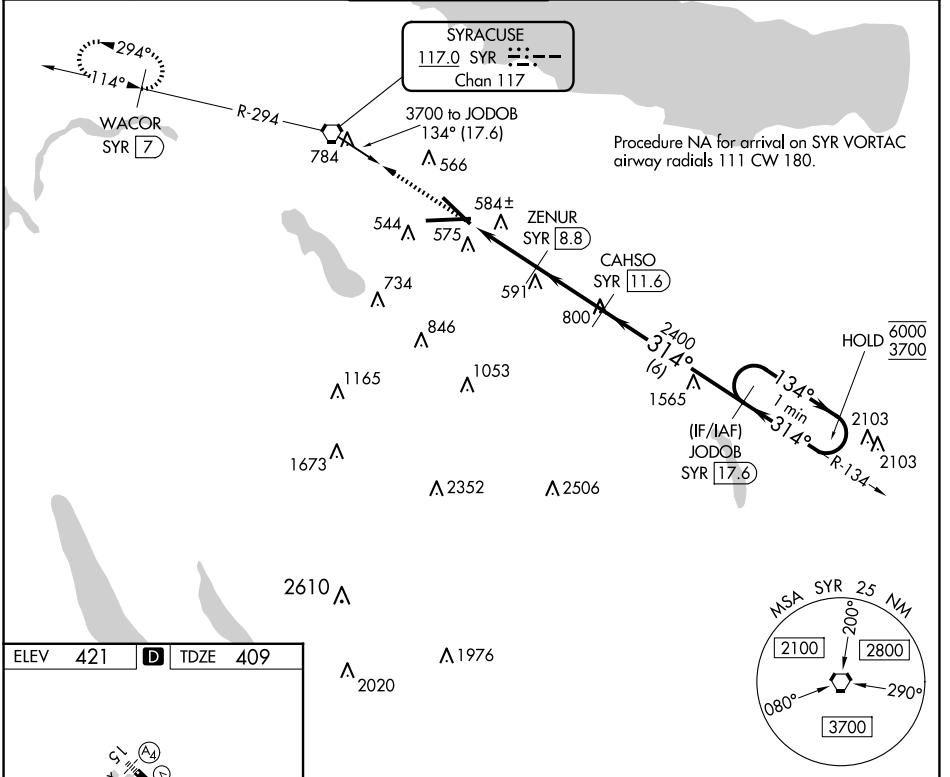
VORTAC SYR 117.0 Chan 117	APP CRS 314°	Rwy ldg TDZE Apt Elev	7499 409 421
--	------------------------	-----------------------------	---

TACAN RWY 33

SYRACUSE HANCOCK INTL (SYR)

▼ ▲	Rwy 33 helicopter visibility reduction below 3/4 SM NA.	MISSED APPROACH: Climb to 3000 direct SYR VORTAC and on SYR VORTAC R-294 to WACOR/7 DME and hold.
----------------------	---	---

ATIS 124.225	SYRACUSE APP CON 126.125 269.125	SYRACUSE TOWER 120.3 239.0	GND CON 121.7 348.6	CLNC DEL 125.05 257.775
------------------------	--	--------------------------------------	-------------------------------	-----------------------------------



ELEV 421	D	TDZE 409				
3000	SYR	SYR R-294	WACOR SYR (7)	CAHSO SYR (11.6)	JODOB SYR (17.6)	One Minute Holding Pattern
	SYR (7.1)	ZENUR SYR (8.8)	SYR (5.9)	TCH 53	2400	134° → 6000 ← 314° 3700
	1.2	1.7 NM	2.8 NM	6 NM		
CATEGORY	A	B	C	D		
S-33	840/55	431 (500-1)	840-1¼	431 (500-1¼)		
C CIRCLING	900-1 479 (500-1)	920-1 499 (500-1)	1020-1½ 599 (600-1½)	1180-2½ 759 (800-2½)		

NE-2, 15 MAY 2025 to 12 JUN 2025

NE-2, 15 MAY 2025 to 12 JUN 2025