

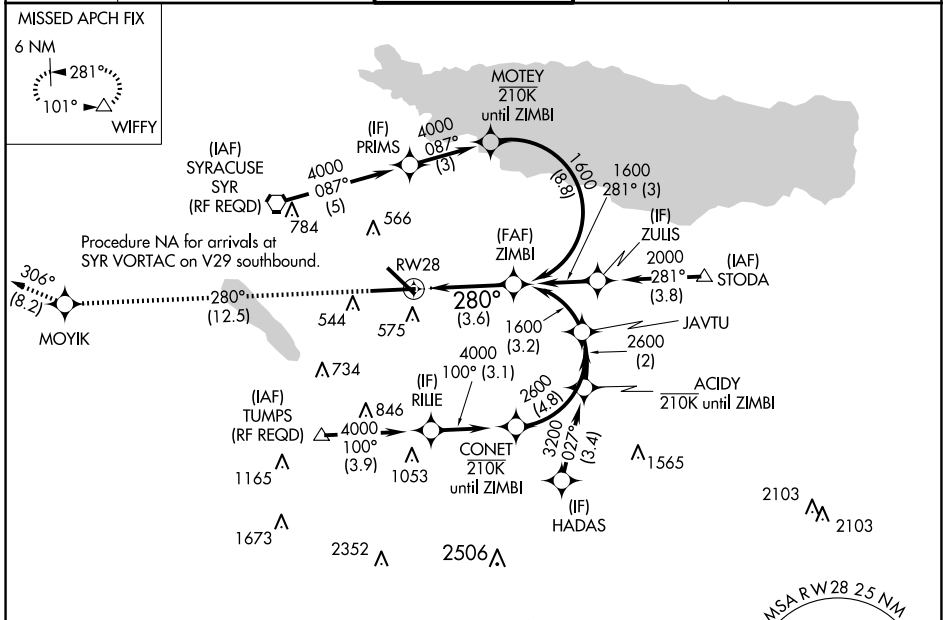
APP CRS	Rwy Idg	9013
280°	TDZE	413
	Apt Elev	421

RNAV (RNP) Y RWY 28

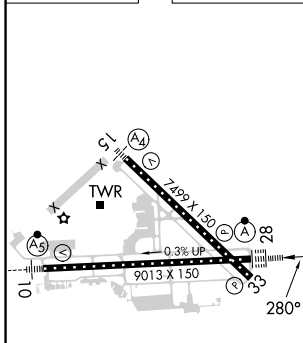
SYRACUSE HANCOCK INTL (SYR)

RNP AR APCH	ALSF-2	MISSED APPROACH: Climb to 3000 on track 280° to MOYIK and on track 306° to WIFFY and hold.
<p>▼ For uncompensated Baro-VNAV systems, procedure NA below -18°C or above 54°C. For inop ALS, increase RNP 0.15 all Cats visibility to 1½. For inop ALS, increase RNP 0.30 all Cats visibility to 1%.</p>		

ATIS	SYRACUSE APP CON	SYRACUSE TOWER	GND CON	CLNC DEL
124.225	126.125 269.125	120.3 239.0	121.7 348.6	125.05 257.775



ELEV 421	D	TDZE 413
----------	----------	----------



3000	MOYIK	tr 280°	WIFFY	tr 306°	ZIMBI	1600
See planview for multiple IF locations.						
RWY 28						
GP 3.00° TCH 78						
3.6 NM						

CATEGORY	A	B	C	D
RNP 0.15 DA		862/55	449 (500-1)	
RNP 0.30 DA		957-1½	544 (600-1%)	

AUTHORIZATION REQUIRED

NE-2, 15 MAY 2025 to 12 JUN 2025

NE-2, 15 MAY 2025 to 12 JUN 2025