

WAAS CH 40017 W10A	APP CRS 100°	Rwy Idg TDZE 421 Apt Elev 421	9013
--	------------------------	---	-------------

RNAV (GPS) Z RWY 10

SYRACUSE HANCOCK INTL (SYR)

RNP APCH - GPS.

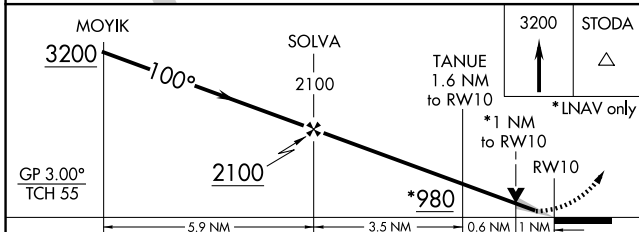
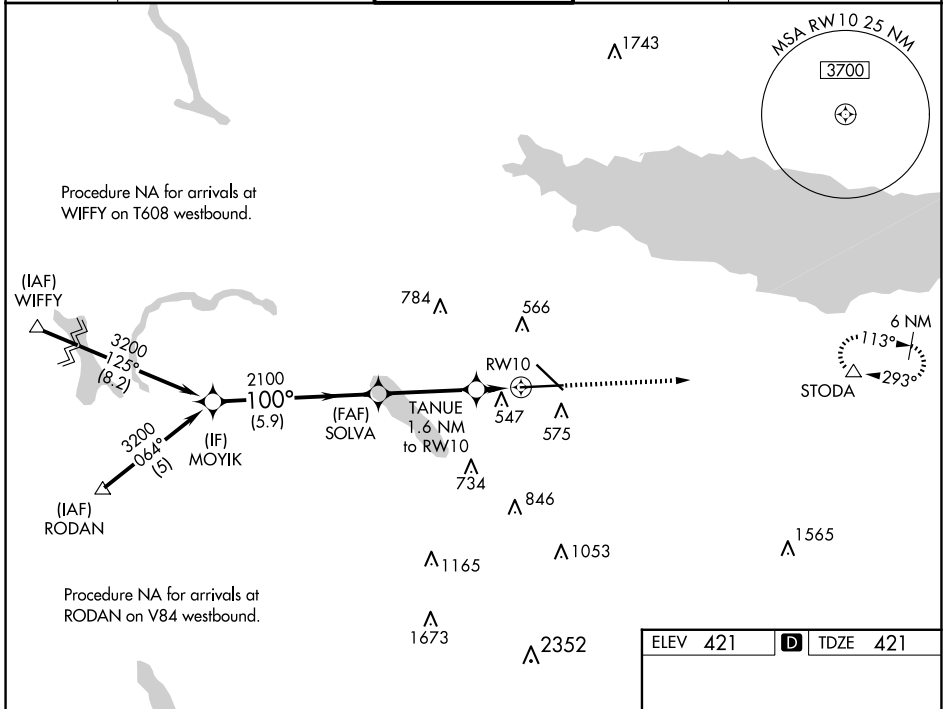
⚠ For uncompensated Baro-VNAV systems, LNAV/VNAV NA below -19°C or above 54°C. For inop ALS, increase LNAV Cats C/D visibility to RVR 5500. # RVR 1800 authorized with use of FD or AP or HUD to DA.

MALSR

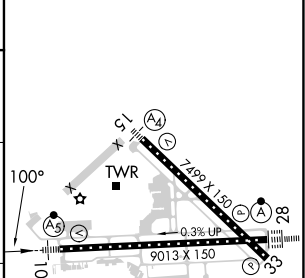


MISSED APPROACH: Climb to 3200 direct STODA and hold, continue climb-in-hold to 3200.

ATIS 124,225	SYRACUSE APP CON 126.125 269.125	SYRACUSE TOWER 120.3 239.0	GND CON 121.7 348.6	CLNC DEL 125.05 257.775
------------------------	--	--------------------------------------	-------------------------------	-----------------------------------



ELEV 421	D TDZE 421
----------	-------------------



CATEGORY	A	B	C	D
LPV DA#		621/24	200 (200-½)	
LNAV/VNAV DA		846/40	425 (500-¾)	
LNAV MDA	800/24	379 (400-½)	800/35	379 (400-¾)
C CIRCLING	900-1 479 (500-1)	920-1 499 (500-1)	1020-1½ 599 (600-1½)	1180-2½ 759 (800-2½)

TDZ/CL Rwy 28
HIRL Rwy 10-28 and 15-33

NE-2, 15 MAY 2025 to 12 JUN 2025

NE-2, 15 MAY 2025 to 12 JUN 2025