

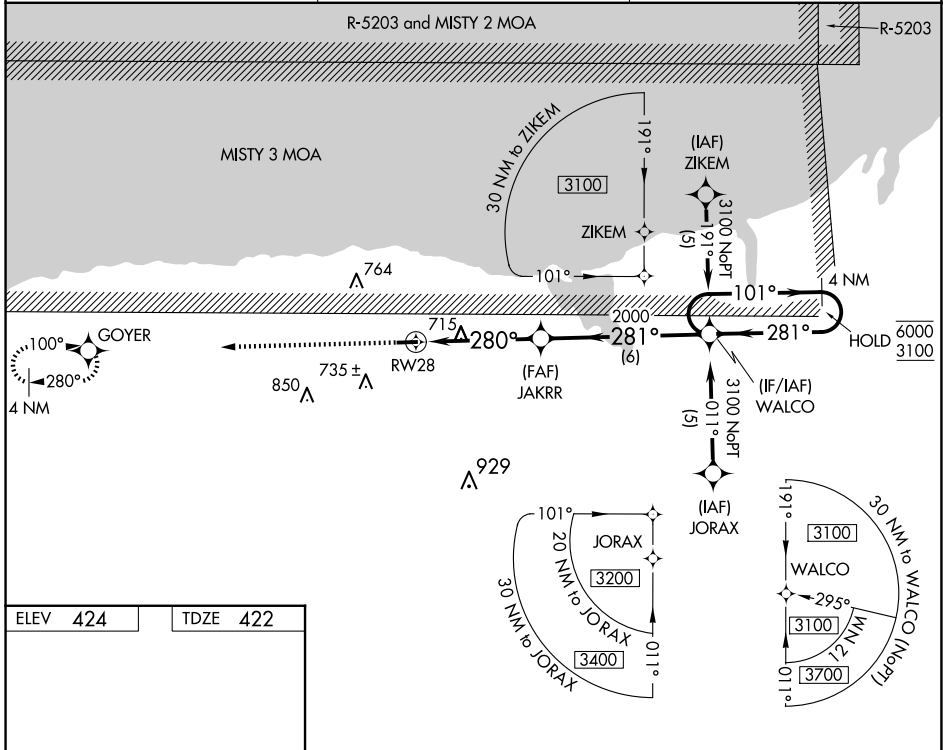
APP CRS	Rwy Idg	<b>3803</b>
<b>280°</b>	TDZE	<b>422</b>
	Apt Elev	<b>424</b>

# RNAV (GPS) RWY 28

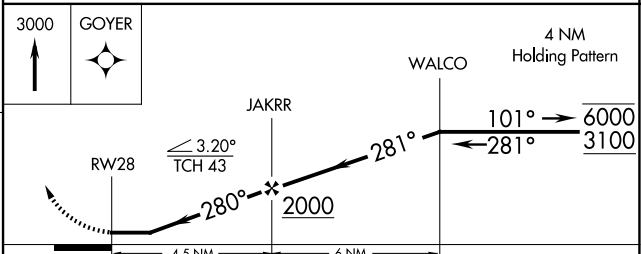
WILLIAMSON/SODUS (SDC)

RNP APCH - GPS.		MISSED APPROACH: Climb to 3000 direct GOYER and hold.
<p><b>Procedure NA at night. Rwy 28 helicopter visibility reduction below 1 SM NA. When local altimeter setting not received, use Rochester altimeter setting and increase all MDAs 80 feet and LNAV visibility Cat C 1/8 SM, and Circling visibility Cat C 1/4 SM.</b></p>		

AWOS-3 <b>124.2</b>	ROCHESTER APP CON <b>119.55 269.6</b>	UNICOM <b>122.8 (CTAF)</b>
------------------------	--	-------------------------------



ELEV <b>424</b>	TDZE <b>422</b>
<p>MIRL Rwy 10-28 <b>1</b> REIL Rwy 10 and 28 <b>1</b></p>	



CATEGORY	A	B	C	D
LNAV MDA	980-1	558 (600-1)	980-1 5/8 558 (600-1 5/8)	NA
<b>C</b> CIRCLING	1000-1 576 (600-1)	1020-1 596 (600-1)	1120-2 696 (700-2)	NA

NE-2, 15 MAY 2025 to 12 JUN 2025

NE-2, 15 MAY 2025 to 12 JUN 2025