

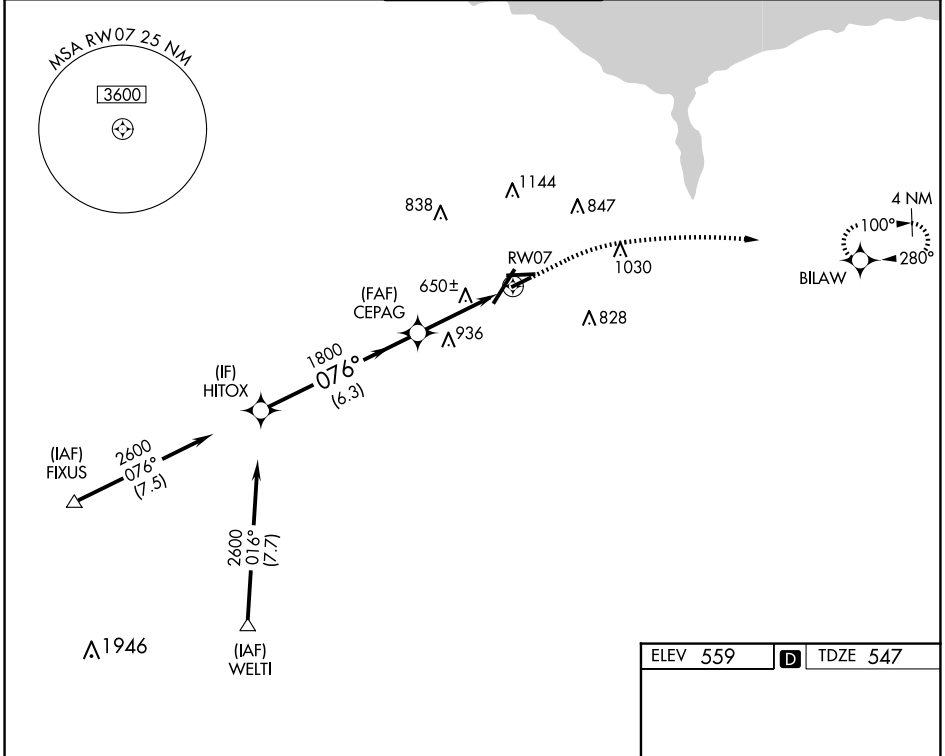
WAAS CH <b>61334</b> <b>W07A</b>	APP CRS <b>076°</b>	Rwy Idg TDZE Apt Elev	<b>4000</b> <b>547</b> <b>559</b>
--	------------------------	-----------------------------	---

# RNAV (GPS) RWY 7

FREDERICK DOUGLASS/GREATER ROCHESTER INTL (ROC)

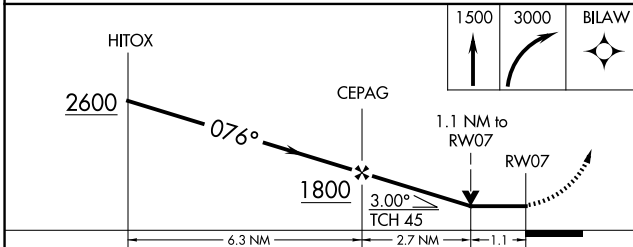
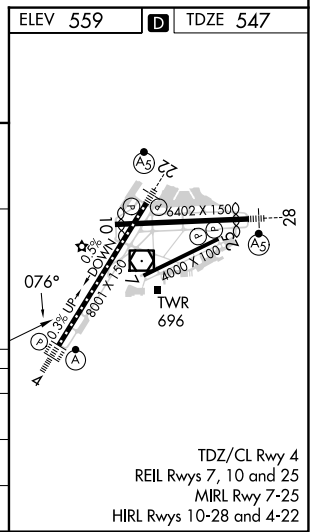
RNP APCH - GPS.	MISSED APPROACH: Climb to 1500 then climbing right turn to 3000 direct BILAW and hold.
Rwy 7 helicopter visibility reduction below 3/4 SM NA.	

ATIS <b>124.825</b>	ROCHESTER APP CON <b>119.55 269.6</b>	ROCHESTER TOWER <b>118.3 254.3</b>	GND CON <b>121.7</b>	CLNC DEL <b>118.8 343.65</b>
------------------------	--	---------------------------------------	-------------------------	---------------------------------



NE-2, 07 AUG 2025 to 04 SEP 2025

NE-2, 07 AUG 2025 to 04 SEP 2025



CATEGORY	A	B	C	D
LP MDA	940-1	393 (400-1)	940-1 1/8	393 (400-1 1/8)
LNAV MDA	1060-1	513 (600-1)	1060-1 3/8	513 (600-1 3/8)
CIRCLING	1060-1	501 (600-1)	1500-2 3/4 941 (1000-2 3/4)	1500-3 941 (1000-3)

# RNAV (GPS) RWY 7