

WAAS CH <b>40402</b> <b>W17A</b>	APP CRS <b>172°</b>	Rwy Idg TDZE Apt Elev	<b>11759</b> <b>234</b> <b>234</b>
--	------------------------	-----------------------------	--

# RNAV (GPS) RWY 17

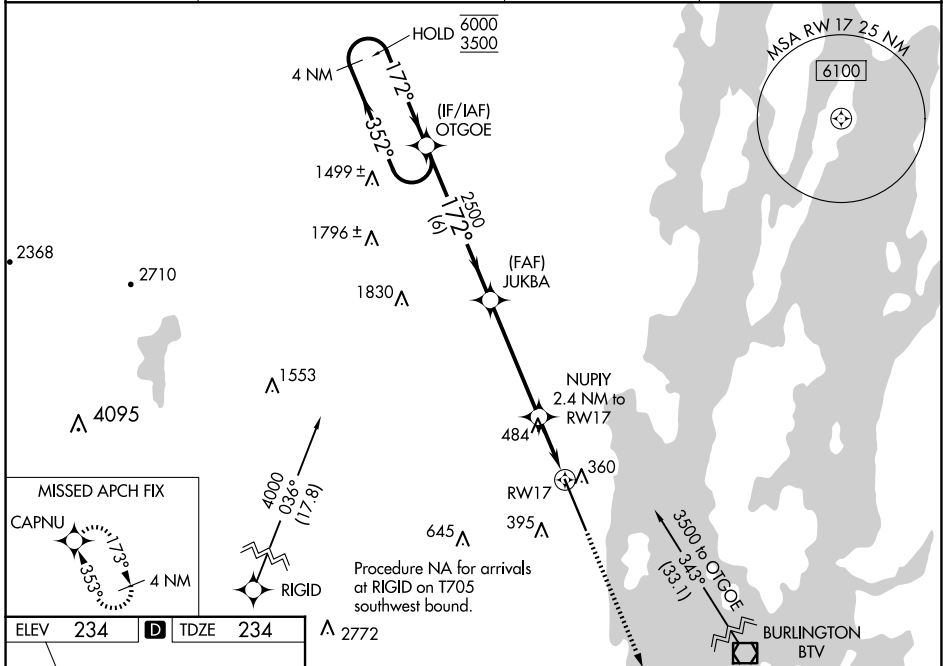
PLATTSBURGH INTL (PBG)

RNP APCH - GPS

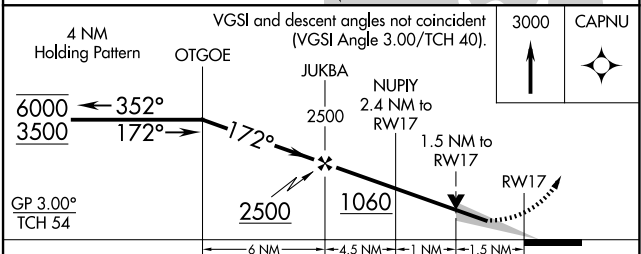
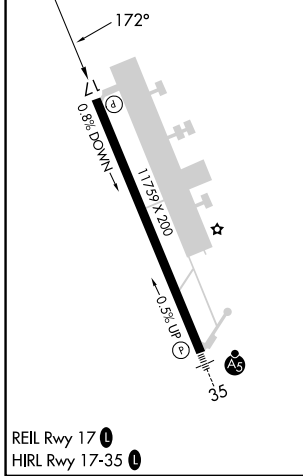
**⚠** Baro-VNAV and VDP NA when using BTV altimeter setting. When local altimeter not received, use BTV altimeter setting and increase LPV DA to 615 feet and all visibilities 1/8 SM. Increase LNAV/VNAV DA to 770 feet and all visibilities 1/8 SM. Increase all MDAs 60 feet and LNAV visibility Cat C/D/E 1/4 SM, and Circling visibility Cat C/D 1/4 SM. For uncompensated Baro-VNAV systems, LNAV/VNAV NA below -15°C or above 54°C.

**MISSED APPROACH:**  
Climb to 3000 direct CAPNU and hold.

ASOS <b>132.225</b>	BURLINGTON APP CON * <b>121.1 278.8</b>	CLNC DEL <b>121.85</b>	UNICOM <b>122.7 (CTAF) 0</b>
------------------------	--	---------------------------	---------------------------------



ELEV	234	<b>D</b>	TDZE	234
------	-----	----------	------	-----



CATEGORY	A	B	C	D	E
LPV DA	561-3/4 327 (400-3/4)				
LNAV/VNAV DA	716-1 482 (500-1 3/8)				
LNAV MDA	740-1	506 (600-1)	740-1 3/8	506 (600-1 3/8)	
CIRCLING	740-1	506 (600-1)	800-1 1/2 566 (600-1 1/2)	960-2 1/4 726 (800-2 1/4)	1100-3 866 (900-3)