

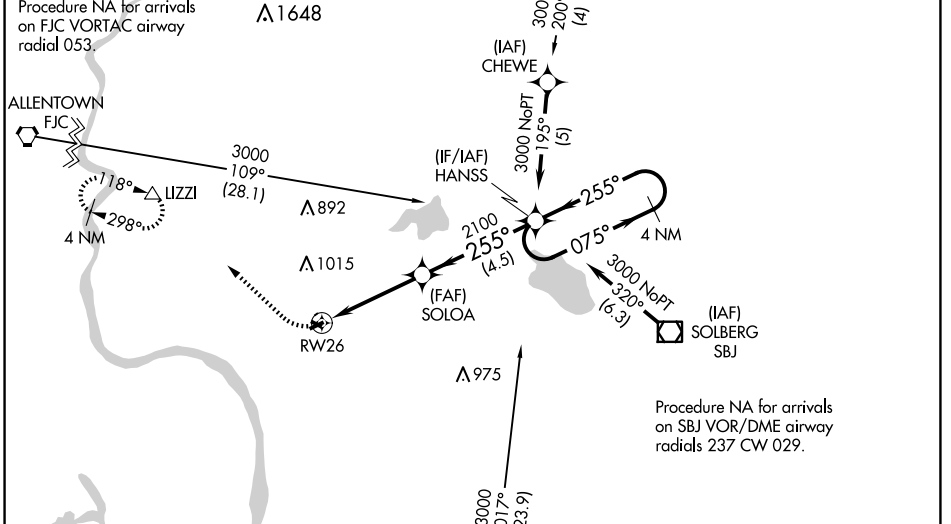
APP CRS	Rwy Idg	NA
255°	TDZE	NA
	Apt Elev	480

# RNAV (GPS)-B

## ALEXANDRIA (N85)

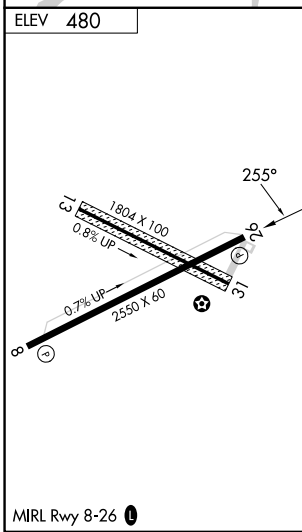
<p><b>▽</b> DME/DME RNP-0.3 NA. Use Lehigh Valley Intl, Allentown, PA altimeter setting. Procedure NA at night. Helicopter visibility reduction below 1 SM NA.</p>	<p>MISSED APPROACH: Climbing right turn 3000 direct LIZZI and hold.</p>

<p>ALLENTOWN APP CON <b>119.65 124.45 351.8</b></p>	<p>UNICOM <b>122.975 (CTAF)</b></p>	<p><b>121.8 0</b></p>
---	---	-----------------------



NE-2, 15 MAY 2025 to 12 JUN 2025

NE-2, 15 MAY 2025 to 12 JUN 2025



<p>Procedure NA for arrivals on RW26 25 NM</p>	<p>Procedure NA for arrivals on LIZZI 3000</p>			
	<p>Procedure NA for arrivals on SOLOA 2100</p>			
<p>4 NM</p>		<p>4 NM Holding Pattern</p>		
<p>3000</p>		<p>255°</p>		
<p>2100</p>		<p>255°</p>		
<p>4 NM</p>		<p>4.5 NM</p>		
<p>CATEGORY</p>	<p>A</p>	<p>B</p>	<p>C</p>	<p>D</p>
<p><b>☐</b> CIRCLING</p>	<p>1240-1 760 (800-1)</p>	<p>NA</p>		