

APP CRS	Rwy Idg	<b>5998</b>
<b>229°</b>	TDZE	<b>183</b>
	Apt Elev	<b>187</b>

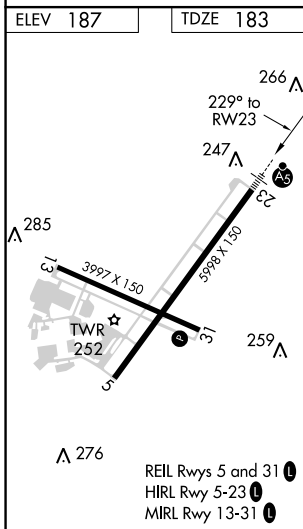
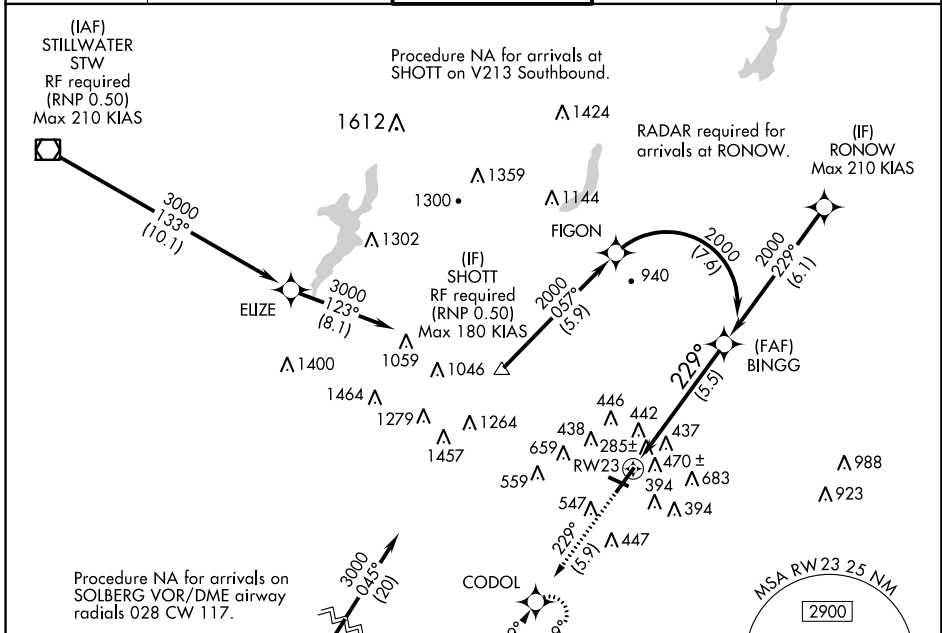
# RNAV (RNP) Y RWY 23

MORRISTOWN MUNI (MMU)

For uncompensated Baro-VNAV systems, procedure NA below -15°C (5°F) or above 48°C (118°F). When local altimeter setting not received, procedure NA. GPS required. For inoperative MALSR, increase RNP 0.11 all Cats visibility to 1¼ mile and RNP 0.30 all Cats visibility to 2 miles. Visibility reduction by helicopters NA.

**MALSR** MISSED APPROACH: Climb to 2000 on track 229° to CODOL and hold.

ATIS <b>124.25</b>	NEW YORK APP CON <b>127.6 379.9</b>	MORRISTOWN TOWER* <b>118.1 (CTAF) 353.9</b>	GND CON <b>134.2</b>	CLNC DEL <b>128.6</b>
-----------------------	--	--	-------------------------	--------------------------



2000	↑ tr 229°	CODOL	See planview for multiple IF locations.															
<table border="1"> <thead> <tr> <th>CATEGORY</th> <th>A</th> <th>B</th> <th>C</th> <th>D</th> </tr> </thead> <tbody> <tr> <td>RNP 0.11 DA</td> <td colspan="4">553-¾ 370 (400-¾)</td> </tr> <tr> <td>RNP 0.30 DA</td> <td colspan="4">788-1½ 605 (700-1½)</td> </tr> </tbody> </table>				CATEGORY	A	B	C	D	RNP 0.11 DA	553-¾ 370 (400-¾)				RNP 0.30 DA	788-1½ 605 (700-1½)			
CATEGORY	A	B	C	D														
RNP 0.11 DA	553-¾ 370 (400-¾)																	
RNP 0.30 DA	788-1½ 605 (700-1½)																	
<b>AUTHORIZATION REQUIRED</b>																		

NE-2, 12 OCT 2017 to 09 NOV 2017

NE-2, 12 OCT 2017 to 09 NOV 2017