

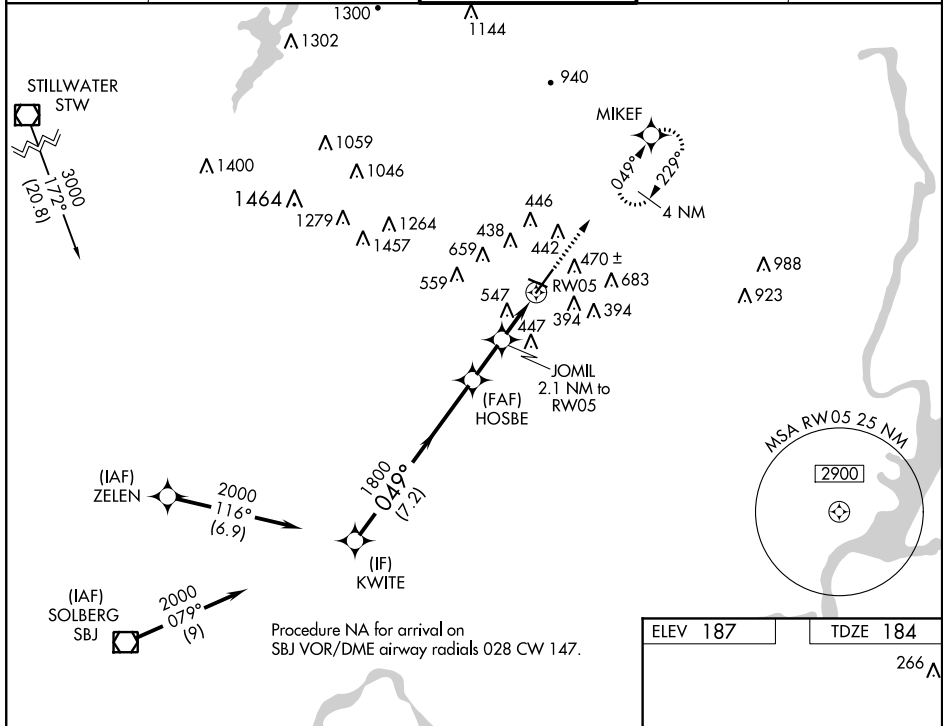
WAAS CH 97720 W05A	APP CRS 049°	Rwy Idg TDZE Apt Elev	5998 184 187
--	------------------------	-----------------------------	---

RNAV (GPS) RWY 5

MORRISTOWN MUNI (MMU)

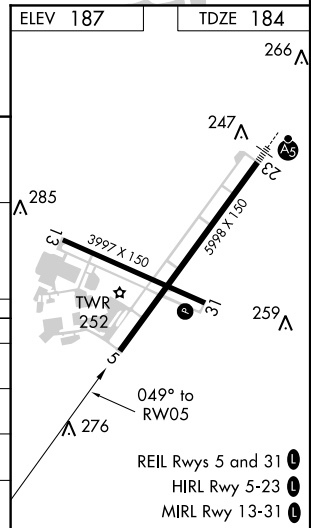
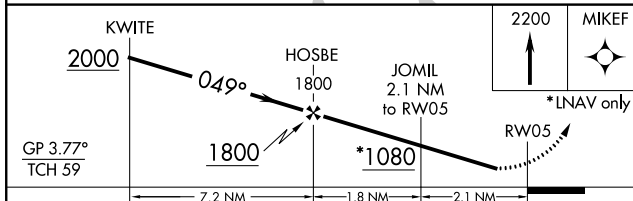
RNP APCH.		MORRISTOWN TOWER* 118.1 (CTAF) 353.9		GND CON 134.2	CLNC DEL 128.6
<p>▽ Rwy 5 helicopter visibility reduction below 1 SM NA. Procedure NA at night. For uncompensated Baro-VNAV systems, LNAV/VNAV NA below -15°C or above 33°C.</p>		<p>MISSED APPROACH: Climb to 2200 direct MIKEF and hold.</p>			

ATIS 124.25	NEW YORK APP CON 127.6 379.9	MORRISTOWN TOWER* 118.1 (CTAF) 353.9	GND CON 134.2	CLNC DEL 128.6
-----------------------	--	---	-------------------------	--------------------------



NE-2, 11 OCT 2018 to 08 NOV 2018

NE-2, 11 OCT 2018 to 08 NOV 2018



CATEGORY	A	B	C	D
LPV DA	861-1 $\frac{7}{8}$	677 (700-1 $\frac{7}{8}$)		NA
LNAV/VNAV DA	893-2	709 (800-2)		NA
LNAV MDA	800-1	616 (700-1)	800-1 $\frac{3}{4}$ 616 (700-1 $\frac{3}{4}$)	NA
C CIRCLING	860-1 673 (700-1)	900-1 713 (800-1)	1000-2 $\frac{1}{2}$ 813 (900-2 $\frac{1}{2}$)	NA