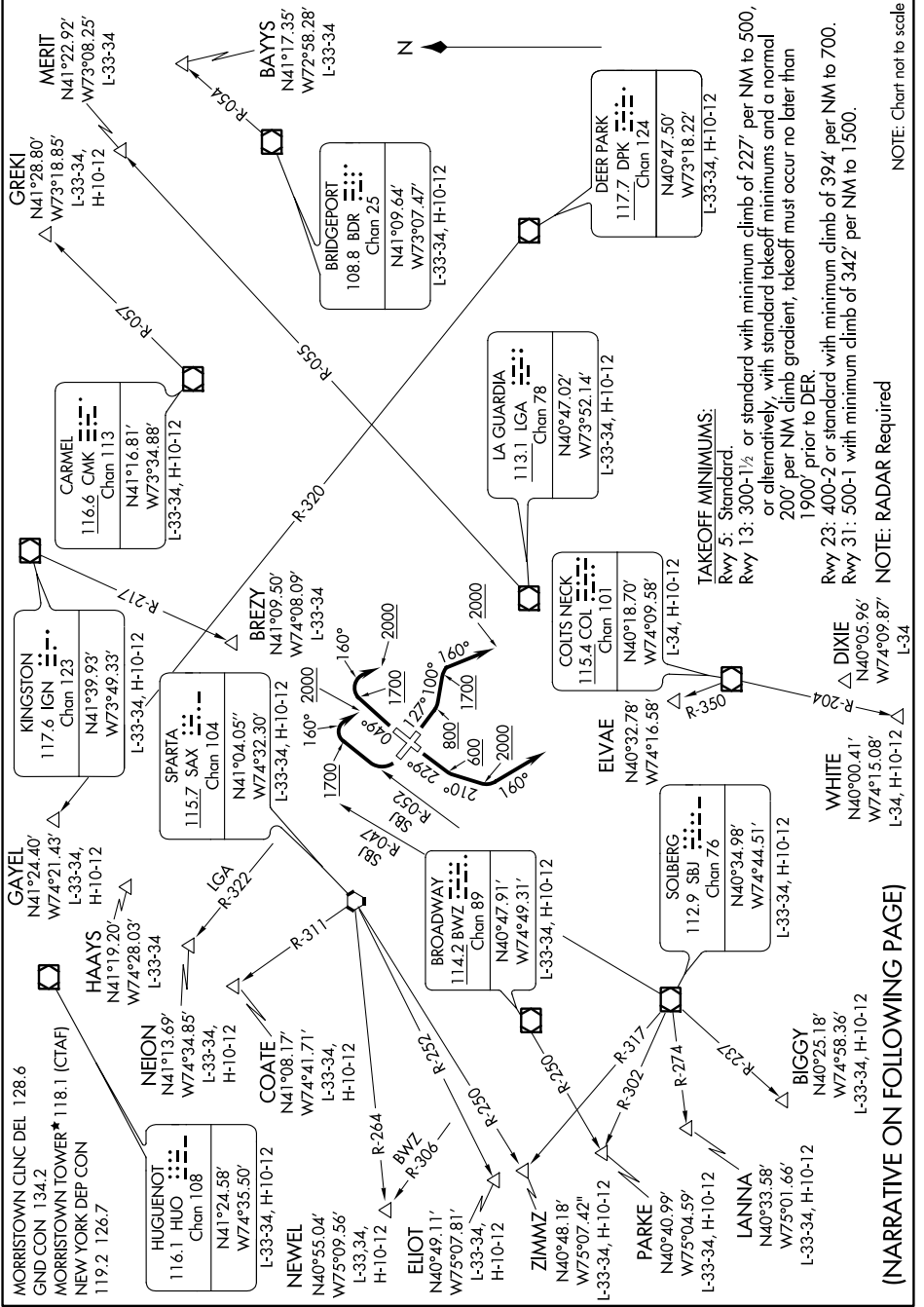


MORRISTOWN SIX DEPARTURE

MORRISTOWN MUNI(MMU)
MORRISTOWN, NEW JERSEY

NE-2. 07 DEC 2017 to 04 JAN 2018



MORRISTOWN SIX DEPARTURE

MORRISTOWN, NEW JERSEY
MORRISTOWN MUNI(MMU)

(NARRATIVE ON FOLLOWING PAGE)

TAKEOFF MINIMUMS:
 Rwy 5: Standard.
 Rwy 13: 300-1/2 or standard with minimum climb of 227' per NM to 500, or alternatively, with standard takeoff minimums and a normal 200' per NM climb gradient, takeoff must occur no later than 1900' prior to DER.
 Rwy 23: 400-2 or standard with minimum climb of 394' per NM to 700.
 Rwy 31: 500-1 with minimum climb of 342' per NM to 1500.

NOTE: RADAR Required

NOTE: Chart not to scale

NE-2. 07 DEC 2017 to 04 JAN 2018