


LOC I-MMU 110.3	APP CRS 229°	Rwy Idg TDZE Apt Elev	5998 183 187
---------------------------	------------------------	-----------------------------	---

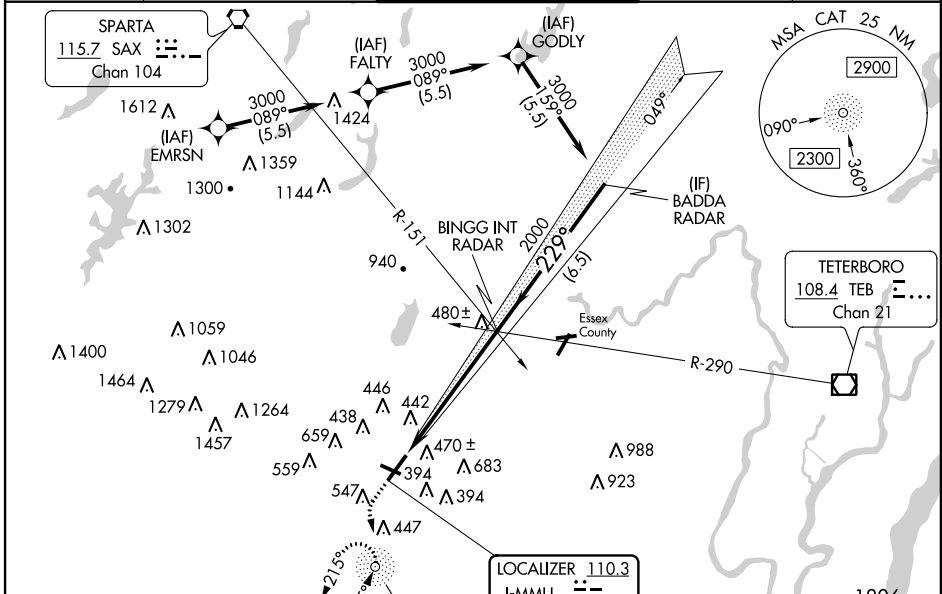
ILS or LOC RWY 23

MORRISTOWN MUNI (MMU)

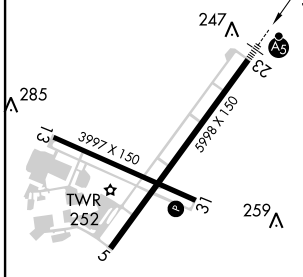
When local altimeter setting not received, use Newark Liberty Intl altimeter setting and increase all DA 54 feet and all MDA 60 feet; increase S-LOC 23 Cat C and D visibility ½ mile. Autopilot coupled approach NA below 732. ADF required. Rwy 23 helicopter visibility reduction below 1 SM NA. Rwy 13, 31 helicopter visibility reduction below 1 SM NA. Circling Rwy 13, 31 NA at night. For inop ALS, increase S-LOC 23 Cat A/B visibility to 1 SM. For inop ALS when using Newark Liberty Intl altimeter setting, increase S-ILS 23 all Cats visibility to 1½ SM, and S-LOC 23 Cat A/B to 1 SM, and Cat C/D to 1¾ SM.

MALSR
 MISSED APPROACH: Climb to 700 then climbing left turn to 2000 direct CAT NDB and hold, continue climb-in-hold to 2000.

ATIS 124.25	NEW YORK APP CON 127.6 379.9	MORRISTOWN TOWER ★ 118.10 (CTAF) 353.9	GND CON 134.2	CLNC DEL 128.6
-----------------------	--	--	-------------------------	--------------------------



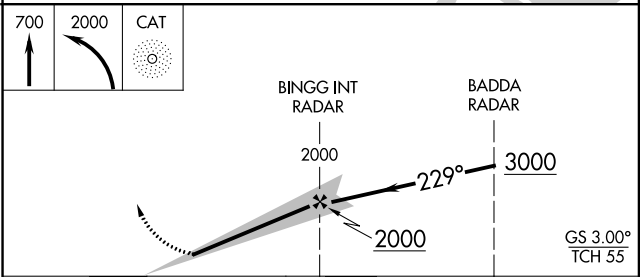
ELEV 187	TDZE 183
----------	----------



GPS or RADAR REQUIRED

CHATHAM 254 CAT

LOCALIZER 110.3 I-MMU



FAF to MAP 5.5 NM	Knots			
	60	90	120	150
	Min:Sec	3:40	2:45	2:12
	5:30	3:40	2:45	2:12
	1:50			

REIL Rws 5 and 31	HIRL Rwy 5-23	MIRL Rwy 13-31
276		

CATEGORY	A	B	C	D
S-ILS 23		488-1	305 (400-1)	
S-LOC 23	740-1	557 (600-1)	740-1½	557 (600-1½)
CIRCLING	860-1 673 (700-1)	900-1 713 (800-1)	1000-2½ 813 (900-2½)	1200-3 1013 (1100-3)

NE-2, 07 DEC 2017 to 04 JAN 2018

NE-2, 07 DEC 2017 to 04 JAN 2018