

WAAS CH 42700 W 28A	APP CRS 281°	Rwy Idg TDZE Apt Elev	6003 85 85
-----------------------------------------	------------------------	-----------------------------	---------------------------------------

RNAV (GPS) RWY 28

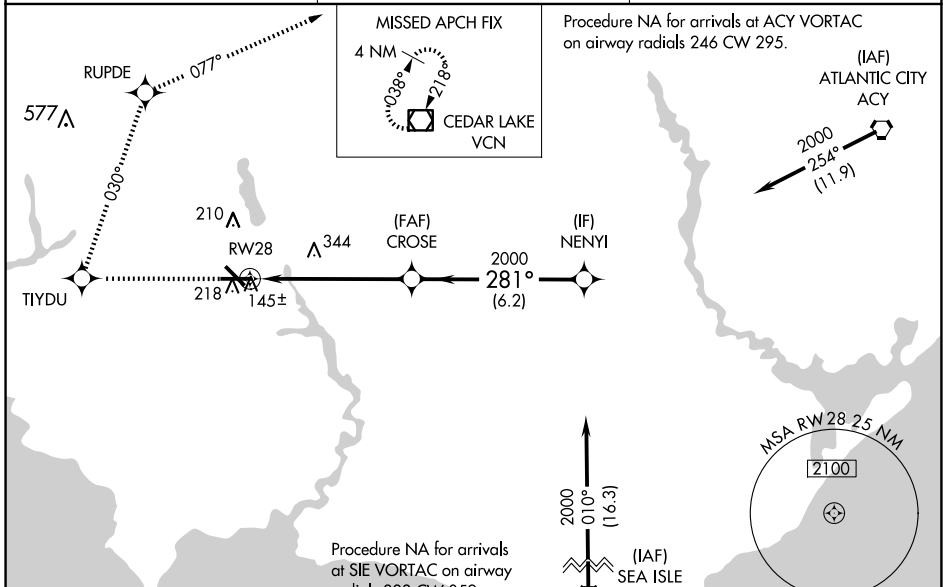
MILLVILLE MUNI (MIV)

RNP APCH-GPS.

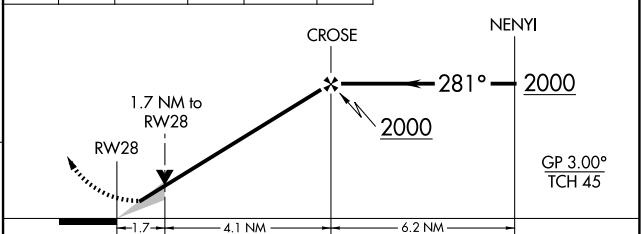
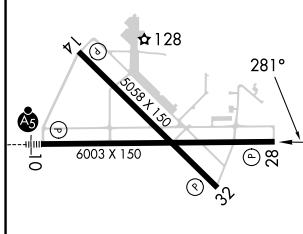
▼ For uncompensated Baro-VNAV systems, LNAV/VNAV NA below -15°C or above 54°C. When local altimeter setting not received, use Atlantic City altimeter setting and increase all DA/MDA 60 feet; increase LNAV/VNAV all Cats, LNAV Cats C/D and Circling Cat C visibility ¼ mile. VDP and Baro-VNAV NA when using Atlantic City altimeter setting.

MISSED APPROACH: Climb to 2000 direct TIYDU and right turn on track 030° to RUPDE and right turn 077° track to VCN VOR/DME and hold.

ASOS 119.6	ATLANTIC CITY APP CON 124.6 327.125	UNICOM 123.0 (CTAF) 0
----------------------	-----------------------------------------------	---------------------------------



ELEV 85	TDZE 85
---------	---------



CATEGORY	A	B	C	D
LPV DA		344-1	259 (300-1)	
LNAV/VNAV DA		405-1	320 (400-1)	
LNAV MDA	640-1	555 (600-1)	640-1½ 555 (600-1½)	640-1¾ 555 (600-1¾)
CIRCLING	640-1	555 (600-1)	660-1½ 575 (600-1½)	660-2 575 (600-2)

NE-2, 15 MAY 2025 to 12 JUN 2025

NE-2, 15 MAY 2025 to 12 JUN 2025