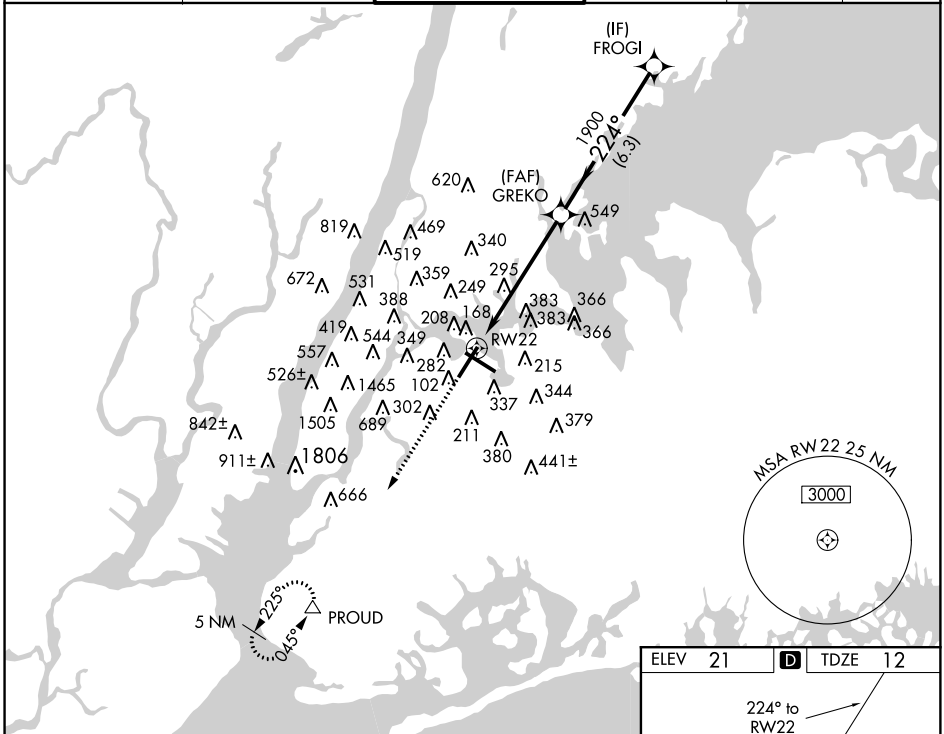


WAAS CH <b>70318</b> <b>W22A</b>	APP CRS <b>224°</b>	Rwy Idg TDZE <b>12</b> Apt Elev <b>21</b>	<b>7001</b>
--	------------------------	---	-------------

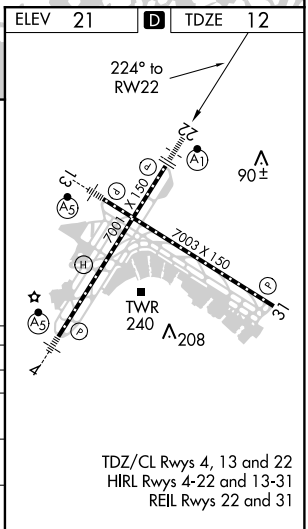
# RNAV (GPS) Y RWY 22

LAGUARDIA (LGA)

RNP APCH. ▼ For uncompensated Baro-VNAV systems, LNAV/VNAV NA below -11°C (13°F) or above 54°C (130°F). ▲	ALSIF-1	MISSED APPROACH: Climb to 3000 direct PROUD and hold, continue climb-in-hold to 3000.			
D-ATIS ARR <b>125.95</b>	NEW YORK APP CON <b>120.8 263.0</b>	LAGUARDIA TOWER <b>118.7 263.0</b>	GND CON <b>121.7 263.0</b>	CLNC DEL <b>135.2</b>	CPDLC



3000 PROUD	VGSI and RNAV glidepath not coincident (VGSI Angle 3.00/TCH 67).			FROGI
*LNAV only	*1.6 NM to RW22	GREKO 1900	3000	
	1.6 NM	4.1 NM	6.3 NM	
GP 3.00° TCH 52				
CATEGORY	A	B	C	D
LPV DA	262/24		250 (300-½)	
LNAV/VNAV DA	527/60		515 (600-1¼)	
LNAV MDA	580/24 568 (600-½)		580/50 568 (600-1)	
CIRCLING	700-1 679 (700-1)		1080-3 1059 (1100-3)	



NE-2, 08 NOV 2018 to 06 DEC 2018

NE-2, 08 NOV 2018 to 06 DEC 2018