

WAAS CH 60918 W04A	APP CRS 044°	Rwy Idg TDZE Apt Elev	7001 21 21
--	------------------------	-----------------------------	---------------------------------------

RNAV (GPS) Y RWY 4

LAGUARDIA (L.G.A.)

⚠ Inop table does not apply to LPV all Cats and LNAV Cats A and B.
⚠ For uncompensated Baro-VNAV systems, LNAV/VNAV NA below -11°C (13°F) or above 47°C (118°F). DME/DME RNP-0.3 NA.
 Helicopter visibility reduction below 1 SM NA.

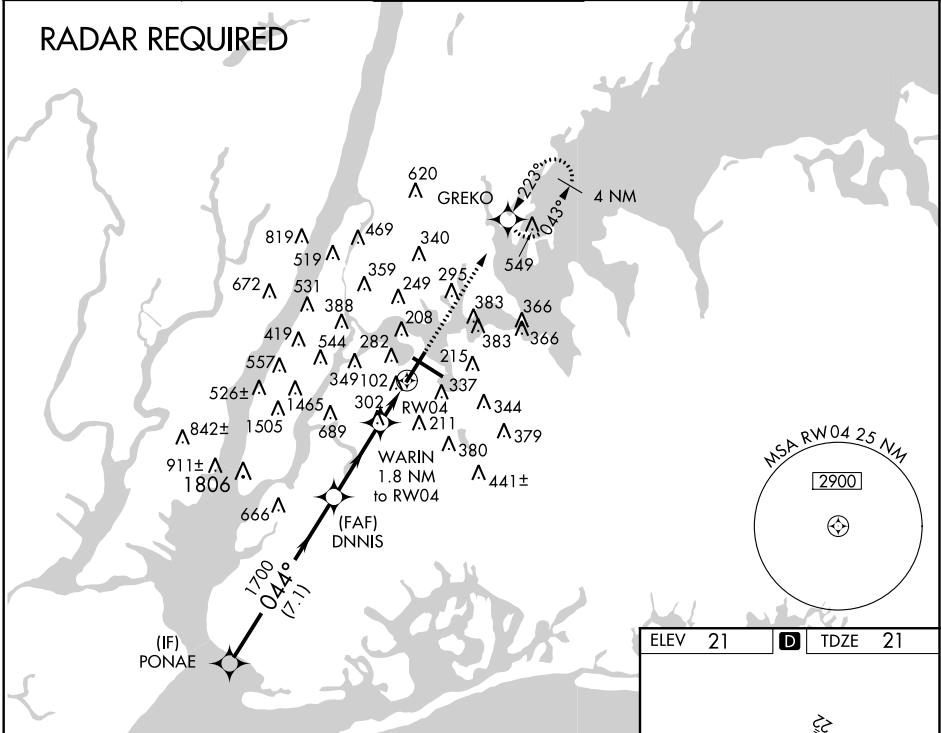
MALSR



MISSED APPROACH: Climb to 2000 direct GREKO and hold.

D-ATIS ARR D-ATIS DEP	125.95 127.05	NEW YORK APP CON 120.8 263.0	LAGUARDIA TOWER 118.7 263.0	GND CON 121.7 263.0	CLNC DEL 135.2	CPDLC
--------------------------	--------------------------------	--	---------------------------------------	-------------------------------	--------------------------	-------

RADAR REQUIRED

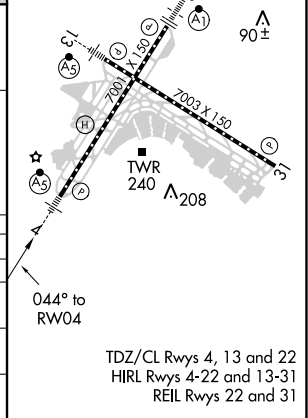


NE-2, 21 JUN 2018 to 19 JUL 2018

NE-2, 21 JUN 2018 to 19 JUL 2018

ELEV 21	D	TDZE 21
---------	----------	---------

GP 3.10° TCH 54	PONA E		DNNIS		WARIN 1.8 NM to RW04		RW04		2000	GREKO
	3000		1700		*640				↑	✧
7.1 NM		3.1 NM		1.8 NM						*LNAV only.
CATEGORY	A		B		C		D			
LPV DA			271/50		250 (300-1)					
LNAV/VNAV DA			488/55		467 (500-1¼)					
LNAV MDA	560/50		539 (600-1)		560/55		539 (600-1¼)			
C CIRCLING	640-1		619 (700-1)		780-2¼ 759 (800-2¼)		1060-3 1039 (1100-3)			



TDZ/CL Rws 4, 13 and 22
 HIRL Rws 4-22 and 13-31
 REIL Rws 22 and 31