

WAAS CH <b>48928</b> <b>W31A</b>	APP CRS <b>314°</b>	Rwy Idg <b>7003</b> TDZE <b>7</b> Apt Elev <b>21</b>
--	------------------------	--

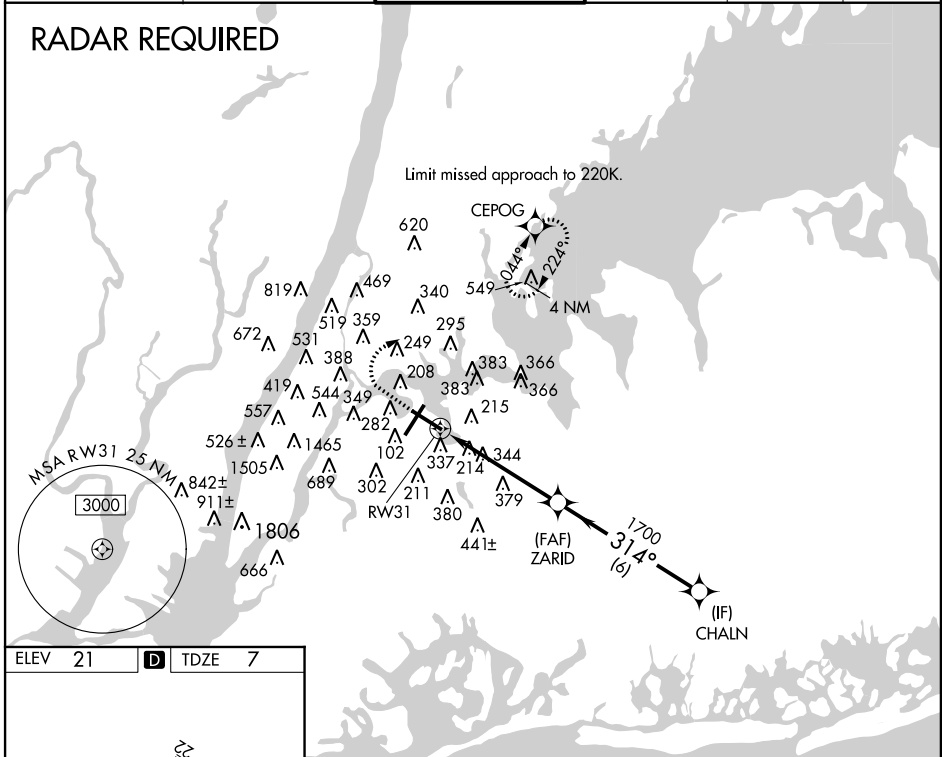
# RNAV (GPS) RWY 31

LAGUARDIA (LGA)

**⚠** For uncompensated Baro-VNAV systems, LNAV/VNAV NA below -11°C (13°F) or above 33°C (91°F). DME/DME RNP-0.3 NA. Helicopter visibility reduction below 1 SM NA. Circling NA to Rwy 4.

MISSED APPROACH: Climb to 700 then climbing right turn to 2000 direct CEPOG and hold.

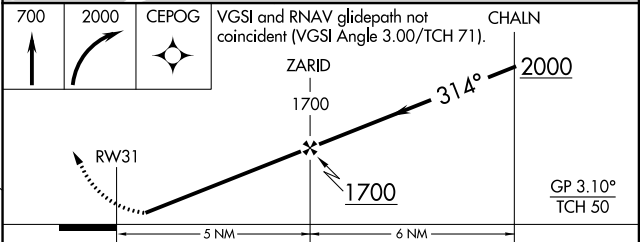
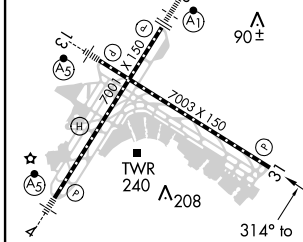
D-ATIS ARR <b>125.95</b> D-ATIS DEP <b>127.05</b>	NEW YORK APP CON <b>120.8 263.0</b>	LAGUARDIA TOWER <b>118.7 263.0</b>	GND CON <b>121.7 263.0</b>	CLNC DEL <b>135.2</b>	CPDLC
--	--	---------------------------------------	-------------------------------	--------------------------	-------



NE-2. 01 MAR 2018 to 29 MAR 2018

NE-2. 01 MAR 2018 to 29 MAR 2018

ELEV 21	<b>D</b>	TDZE 7
---------	----------	--------



CATEGORY	A	B	C	D
LPV DA		330/50	323 (400-1)	
LNAV/VNAV DA		567-1 <sup>7</sup> / <sub>8</sub>	560 (600-1 <sup>7</sup> / <sub>8</sub> )	
LNAV MDA	640/55	633 (700-1 <sup>1</sup> / <sub>4</sub> )	640-1 <sup>3</sup> / <sub>4</sub>	633 (700-1 <sup>1</sup> / <sub>4</sub> )
<b>C</b> CIRCLING	640-1	619 (700-1)	780-2 <sup>1</sup> / <sub>4</sub> 759 (800-2 <sup>1</sup> / <sub>4</sub> )	1040-3 1019 (1100-3)

TDZ/CL Rws 4, 13 and 22  
HIRL Rws 4-22 and 13-31  
REIL Rws 13, 22 and 31