

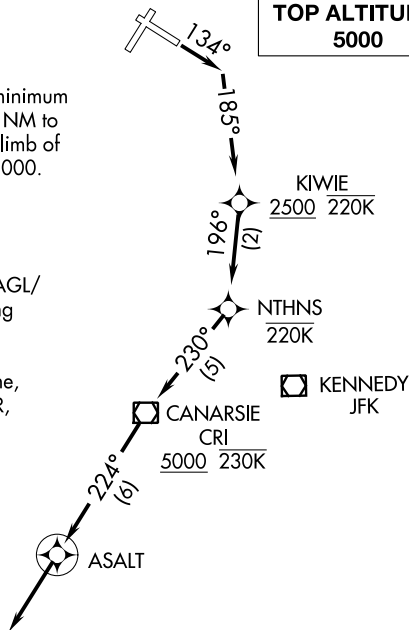
NTHNS FOUR DEPARTURE (RNAV)

D-ATIS
127.05
CLNC DEL
135.2
CPDLC
GND CON
121.7 263.0
LAGUARDIA TOWER
118.7 263.0
NEW YORK DEP CON
120.4 263.0

TAKEOFF MINIMUMS:
Rwys 4, 22, 31: NA-ATC.
Rwy 13: Standard with a minimum
climb of 600' per NM to
2500, then ATC climb of
355' per NM to 5000.

TAKEOFF OBSTACLE NOTES:
Rwy 13: Localizer 392' from DER, on centerline, 18' AGL/
19' MSL. Stacks, fences, and buildings beginning
97' from DER, 171' left of centerline, up to 83'
AGL/103' MSL. Fences, buildings, and trees
beginning 28' from DER, 415' right of centerline,
up to 21' AGL/22' MSL. Stack 4934' from DER,
1513' left of centerline, 172' AGL/181' MSL.
Building 1.9 NM from DER, 758' right of
centerline, 260' AGL/345' MSL.

TOP ALTITUDE:
5000



☐ KENNEDY
JFK

☐ COLTS NECK
COL

△ SHIPP

△ WAVEY

△ ROBBINSVILLE
RBV

NOTE: For Turbojets only.
 NOTE: RADAR required.
 NOTE: DME/DME/IRU or GPS required.
 NOTE: RNAV 1.
 NOTE: Do not exceed 220K until passing NTHNS.
 NOTE: Do not exceed 230K until passing CRI VOR/DME.
 NOTE: Strict compliance to track and altitude restrictions is mandatory. Aircraft performance may require reduced airspeed to comply with altitude restrictions. Advise ATC on initial contact if unable to comply with climb gradient requirements.
 NOTE: Aircraft filed RBV, WHITE, SHIPP, WAVEY, DIXIE, expect radar vectors after ASALT.

△ DIXIE

△ WHITE

NOTE: Chart not to scale.



DEPARTURE ROUTE DESCRIPTION

TAKEOFF RUNWAY 13: Climb heading 134° to intercept course 185° to cross KIWIE at or above 2500, then on track 196° to NTHNS, then on track 230° to cross CRI VOR/DME at or above 5000, then on track 224° to ASALT, then on track 224° for vectors on course. Maintain 5000 or as assigned by ATC. Expect clearance to filed altitude/flight level 10 minutes after departure.