

LOC I-LGA 110.5	APP CRS 044°	Rwy ldg TDZE Apt Elev	7001 21 21
---------------------------	------------------------	-----------------------------	---------------------------------------

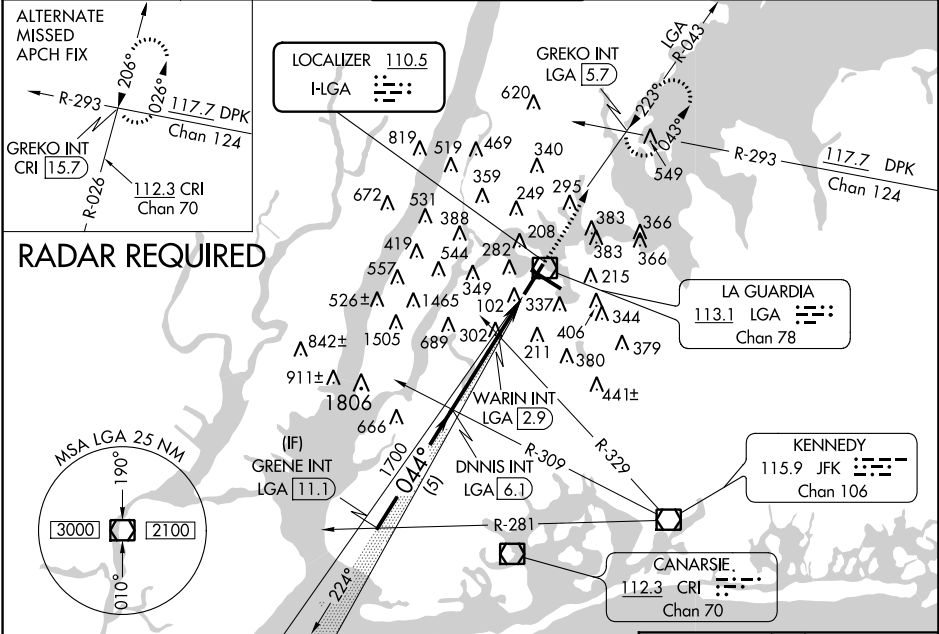
ILS or LOC RWY 4 LAGUARDIA (LGA)

⚠ Inp table does not apply to S-ILS 4 all Cats, S-LOC 4 Cats A/B and WARIN fix minimums Cats A/B. Helicopter visibility reduction below RVR 5000 NA. DME from LGA VOR/DME. Circling NA to Rwy 4. Autopilot coupled approach NA.

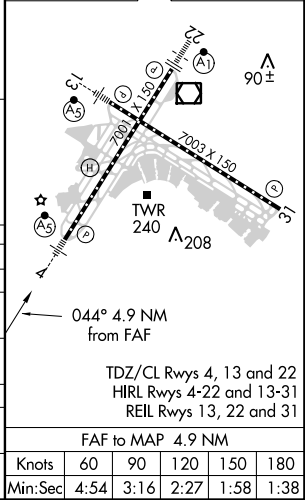
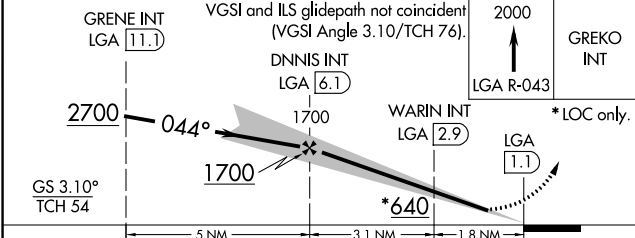


MISSED APPROACH: Climb to 2000 on LGA VOR/DME R-043 to GREKO INT/LGA 5.7 DME and hold.

D-ATIS ARR 125.95	NEW YORK APP CON 120.8 263.0	LAGUARDIA TOWER 118.7 263.0	GND CON 121.7 263.0	CLNC DEL 135.2	CPDLC
D-ATIS DEP 127.05					



ELEV 21	TDZE 21
---------	---------



CATEGORY	A	B	C	D
S-ILS 4	305/50 284 (300-1)			
S-LOC 4	640/50	619 (700-1)	640-1 3/8	619 (700-1 3/8)
C CIRCLING	640-1	619 (700-1)	780-2 1/4 759 (800-2 1/4)	1040-3 1019 (1100-3)
WARIN FIX MINIMUMS (DUAL VOR RECEIVERS OR DME REQUIRED)				
S-LOC 4	560/50	539 (600-1)	560/55	539 (600-1 1/4)
C CIRCLING	640-1	619 (700-1)	780-2 1/4 759 (800-2 1/4)	1040-3 1019 (1100-3)

NE-2. 09 NOV 2017 to 07 DEC 2017

NE-2. 09 NOV 2017 to 07 DEC 2017