

# HOPEA THREE DEPARTURE (RNAV)

D-ATIS  
127.05  
CLNC DEL  
135.2  
CPDLC  
GND CON  
121.7 263.0  
LAGUARDIA TOWER  
118.7 263.0  
NEW YORK DEP CON  
120.4 263.0

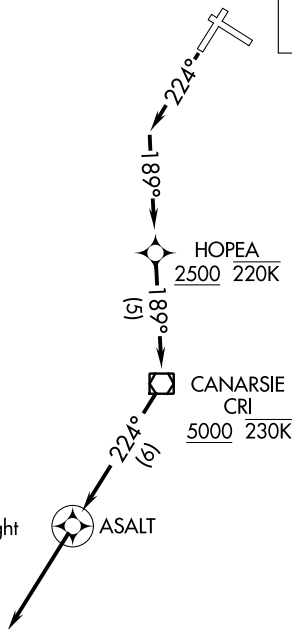
**TOP ALTITUDE:  
5000**

### TAKEOFF MINIMUMS

Rwys 4, 13, 31: NA-ATC.  
Rwy 22: Standard with minimum climb of 516' per NM to 5000.

### TAKEOFF OBSTACLE NOTES

Rwy 22: Buildings and trees beginning 165' from DER, 150' left of centerline, up to 72' AGL/101' MSL. Blast fence, fence, stack on building, navaid and trees beginning 109' from DER, 138' right of centerline, up to 55' AGL/104' MSL. Tower 1.8 NM from DER, 566' right of centerline, 222' AGL/302' MSL.



SHIPP  $\Delta$

WAVEY  $\Delta$

ROBBINSVILLE  
RBV  $\square$

DIXIE  $\Delta$

WHITE  $\Delta$

- NOTE: For Turbojets only.
- NOTE: DME/DME/IRU or GPS required.
- NOTE: RADAR required.
- NOTE: RNAV 1.
- NOTE: Do not exceed 220K until passing HOPEA.
- NOTE: Do not exceed 230K until passing CRI VOR/DME.
- NOTE: Strict compliance to track and altitude restrictions is mandatory. Aircraft performance may require reduced airspeed to comply with altitude restrictions. Advise ATC on initial contact if unable to comply with climb gradient requirements.
- NOTE: Aircraft filed RBV VORTAC, WHITE, SHIPP, WAVEY, DIXIE expect vectors after ASALT.

NOTE: Chart not to scale.



### DEPARTURE ROUTE DESCRIPTION

**TAKEOFF RUNWAY 22:** Climb heading 224° to intercept course 189° to cross HOPEA at or above 2500, then on track 189° to cross CRI VOR/DME at or above 5000, then on track 224° to ASALT, then on track 224° for vectors on course. Maintain 5000 or as assigned by ATC. Expect clearance to filed altitude/flight level 10 minutes after departure.