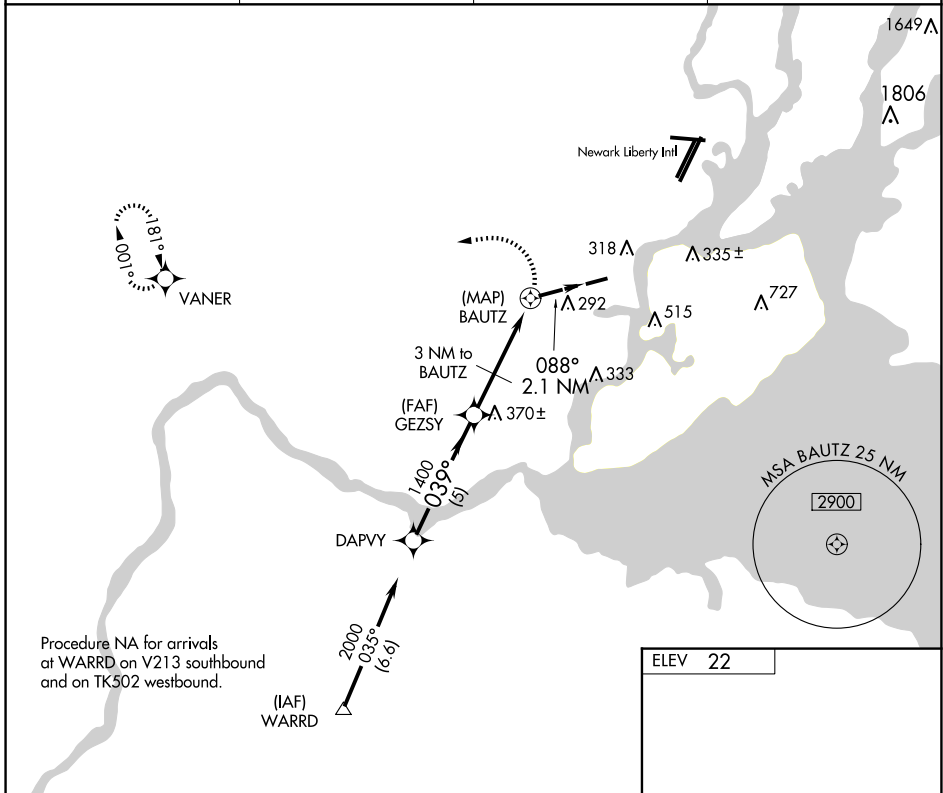


APP CRS 039°	Rwy Idg TDZE Apt Elev	N/A N/A 22
------------------------	-----------------------------	---------------------------------------

GPS-A
LINDEN (LDJ)

RNP APCH - GPS	When local altimeter setting not received, use Newark Liberty Intl altimeter setting. Helicopter visibility reduction below 1 SM NA. Procedure NA at night.	MISSED APPROACH: Climbing left turn to 2000 direct VANER WP and hold.
----------------	---	---

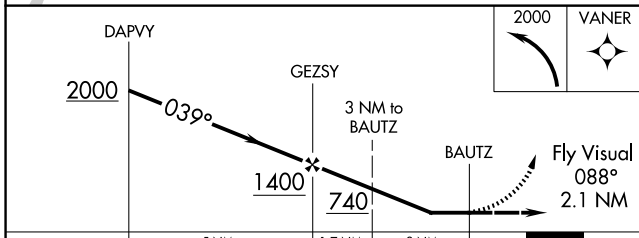
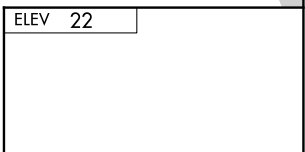
AWOS-3 124.025	NEWARK APP CON 128.55 379.9	CLNC DEL 127.25	UNICOM 123.0 (CTAF)
--------------------------	---------------------------------------	---------------------------	-------------------------------



NE-2, 15 MAY 2025 to 12 JUN 2025

NE-2, 15 MAY 2025 to 12 JUN 2025

Procedure NA for arrivals at WARRD on V213 southbound and on TK502 westbound.



CATEGORY	A	B	C	D
CIRCLING	620-2½	598 (600-2½)	880-2½ 858 (900-2½)	NA
NEWARK ALTIMETER SETTING MINIMUMS				
CIRCLING	640-2½	618 (700-2½)	900-2½ 878 (900-2½)	NA

ELEV 22

2000 VANER

MIRL Rwy 9-27

REIL Rwy 9 and 27