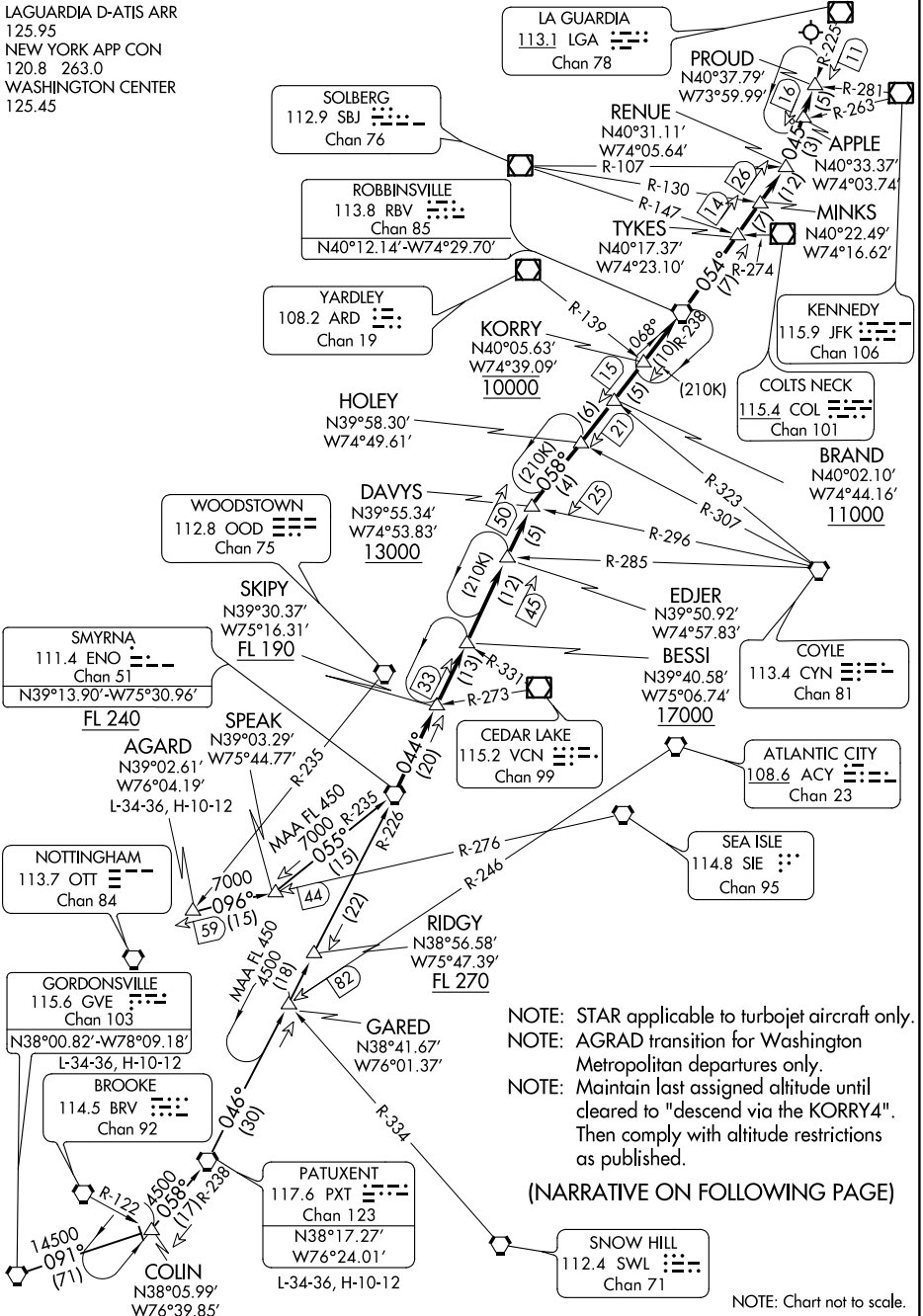


# KORRY FOUR ARRIVAL

LAGUARDIA D-ATIS ARR  
125.95  
NEW YORK APP CON  
120.8 263.0  
WASHINGTON CENTER  
125.45



NOTE: STAR applicable to turbojet aircraft only.  
 NOTE: AGRAD transition for Washington Metropolitan departures only.  
 NOTE: Maintain last assigned altitude until cleared to "descend via the KORRY4". Then comply with altitude restrictions as published.

(NARRATIVE ON FOLLOWING PAGE)

NOTE: Chart not to scale.

NE-2, 09 NOV 2017 to 07 DEC 2017

NE-2, 09 NOV 2017 to 07 DEC 2017

# KORRY FOUR ARRIVAL (ENO.KORRY4) 120CT17