


LOC/DME I-SP <b>108.3</b> Chan <b>20</b>	APP CRS <b>059°</b>	Rwy Ldg TDZE Apt Elev	<b>7006</b> <b>94</b> <b>99</b>
--	------------------------	-----------------------------	---------------------------------------

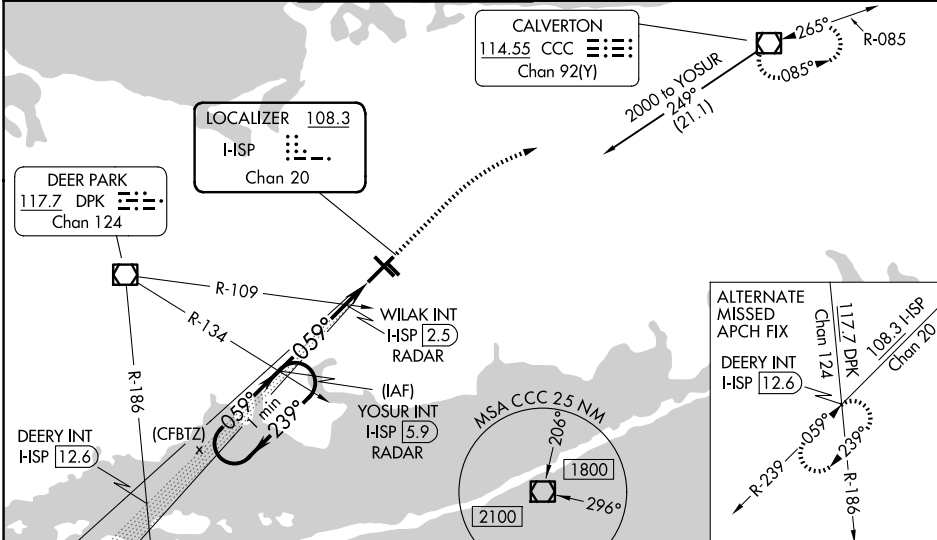
# ILS or LOC RWY 6

## LONG ISLAND MAC ARTHUR (ISP)

**⚠** When local altimeter setting not received, use Shirley altimeter setting and increase all DA 28 feet and all MDA 40 feet, increase S-LOC 6 Cat C and D visibility to RVR 4500 and Circling Cat C and D visibility 1/4 mile. Increase WILAK fix minimums S-LOC 6 Cat C and D visibility to RVR 3500. For inoperative MALSR, increase S-LOC 6 Cat C and D visibility to RVR 6000. Increase WILAK fix minimums S-LOC 6 Cats C and D visibility to RVR 5500.  
 \*\* RVR 1800 authorized with use of FD or AP or HUD to DA, NA when using Shirley altimeter setting.

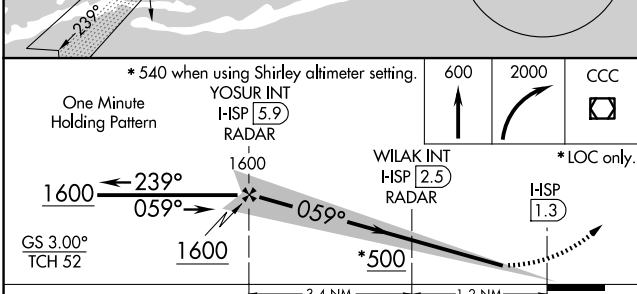
MALSR  
  
 MISSED APPROACH:  
 Climb to 600 then climbing right turn to 2000 direct CCC VOR/DME and hold.

ATIS <b>120.725</b>	NEW YORK APP CON <b>120.05 343.75</b>	LONG ISLAND TOWER* <b>119.3 (CTAF) 335.5</b>	GND CON <b>135.3</b>	CLNC DEL <b>121.85</b>	UNICOM <b>122.95</b>
------------------------	--	---	-------------------------	---------------------------	-------------------------



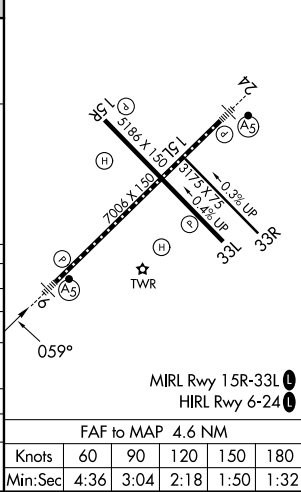
NE-2, 07 AUG 2025 to 04 SEP 2025

NE-2, 07 AUG 2025 to 04 SEP 2025



ELEV 99	<b>D</b>	TDZE 94
---------	----------	---------

CATEGORY	A	B	C	D
S-ILS 6		** 294/24	200 (200-1/2)	
S-LOC 6	500/24	406 (500-1/2)	500/40	406 (500-3/4)
CIRCLING	600-1 501 (600-1)	660-1 561 (600-1)	660-1 1/2 561 (600-1 1/2)	960-2 3/4 861 (900-2 3/4)
WILAK FIX MINIMUMS (DUAL VOR RECEIVERS OR DME REQUIRED)				
S-LOC 6	440/24	346 (400-1/2)	440/30	346 (400-3/8)
CIRCLING	600-1 501 (600-1)	660-1 561 (600-1)	660-1 1/2 561 (600-1 1/2)	960-2 3/4 861 (900-2 3/4)



FAF to MAP 4.6 NM					
Knots	60	90	120	150	180
Min:Sec	4:36	3:04	2:18	1:50	1:32