


LOM IA	APP CRS	Rwy ldg	9129
329	280°	TDZE	588
		Apt Elev	592

NDB RWY 28R

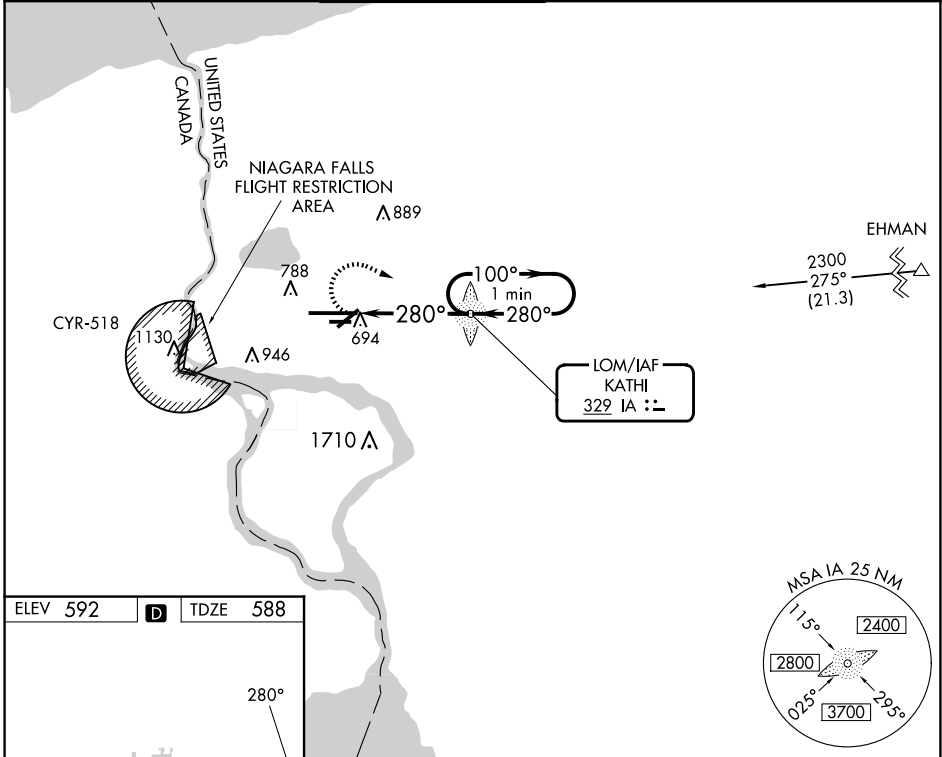
NIAGARA FALLS INTL (IAG)

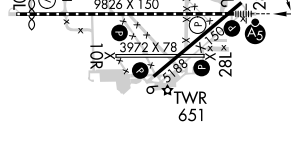
⚠ When local altimeter setting not received, use Buffalo Niagara Intl altimeter setting and increase all MDA 60 feet, increase S-28R Cat C and D visibility $\frac{1}{4}$ SM and Circling Cat C and D $\frac{1}{4}$ SM. For inop MALSRR, increase S-28R Cats A/B visibility to RVR 5500 and Cats C/D visibility to $\frac{1}{2}$. For inop MALSRR when using Buffalo Niagara Intl altimeter setting, increase S-28R Cats C/D visibility to $\frac{1}{2}$. Rwy 28R helicopter visibility reduction below $\frac{1}{4}$ SM NA. Circling Rwy 6, 10R, 24, 28L NA at night.


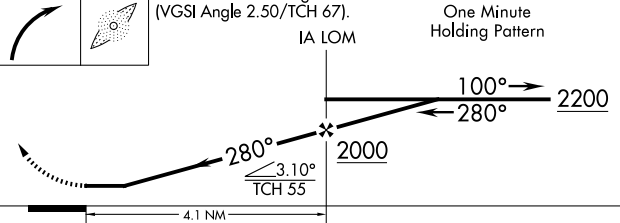
MALSRR


MISSED APPROACH:
 Climbing right turn to 3200 direct KATHI LOM and hold, continue climb-in-hold to 3200.

ATIS	BUFFALO APP CON	NIAGARA TOWER*	GND CON	CLNC DEL	UNICOM
120.8 269.4	126.5 317.6	118.5 (CTAF) 349.0	125.3 275.8	119.25 251.1	122.95



ELEV 592	D	TDZE 588
		
TDZ/CL Rwy 28R 1 REIL Rws 6, 10R, 24, and 28L 1 HIRL Rwy 10L-28R 1 MIRL Rws 6-24 and 10R-28L 1		
FAF to MAP 4.1 NM		
Knots	60	90 120 150 180
Min:Sec	4:06	2:44 2:03 1:38 1:22

	VGSI and descent angles not coincident (VGSI Angle 2.50/TCH 67).		One Minute Holding Pattern	
				
CATEGORY	A	B	C	D
S-28R	1200/40	612 (700- $\frac{3}{4}$)	1200-1 $\frac{3}{8}$	612 (700-1 $\frac{3}{8}$)
C CIRCLING	1200-1	608 (700-1)	1280-2 688 (700-2)	1280-2 $\frac{1}{4}$ 688 (700-2 $\frac{1}{4}$)

NE-2, 15 MAY 2025 to 12 JUN 2025

NE-2, 15 MAY 2025 to 12 JUN 2025