

LOC I-HWV <b>108.95</b>	APP CRS <b>059°</b>	Rwy Idg <b>4200</b> TDZE <b>76</b> Apt Elev <b>81</b>
----------------------------	------------------------	---

# ILS or LOC RWY 6

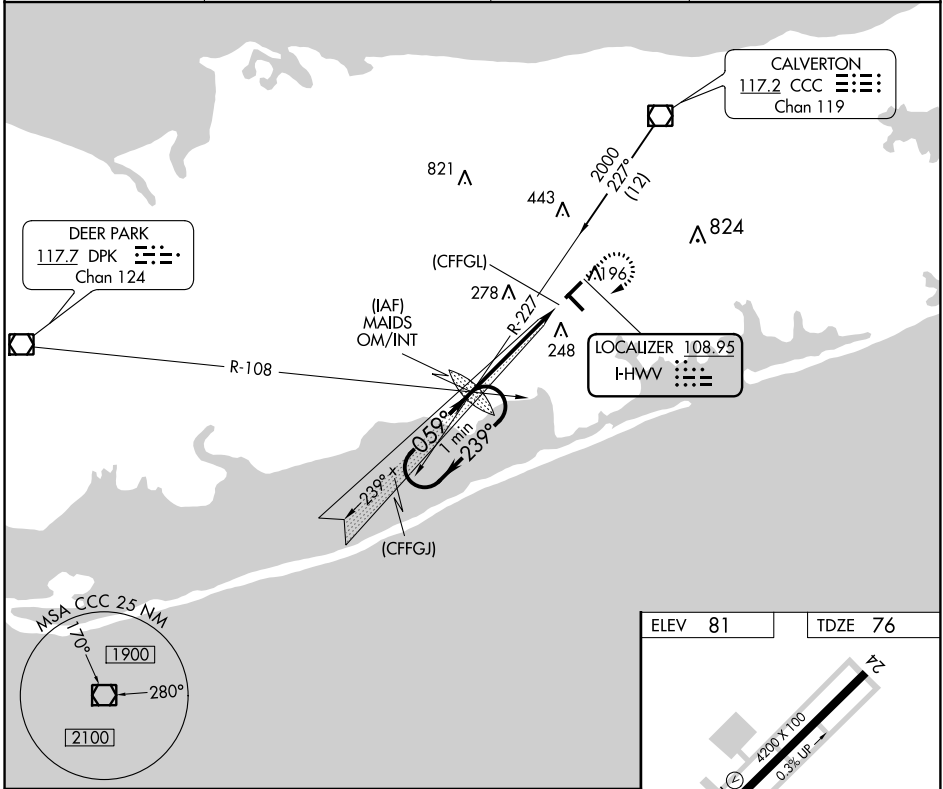
BROOKHAVEN (HWV)

**NA** Helicopter visibility reduction below  $\frac{3}{4}$  SM NA. When local altimeter setting not received, use Long Island Mac Arthur altimeter setting and increase all DA 28 feet and all MDA 40 feet. For inoperative MALSR, increase S-ILS 6 all Cats visibility to  $\frac{3}{8}$ , and S-LOC 6 all Cats visibility to 1 mile. ILS localizer unusable 0.4 NM to threshold.

**MALSR**

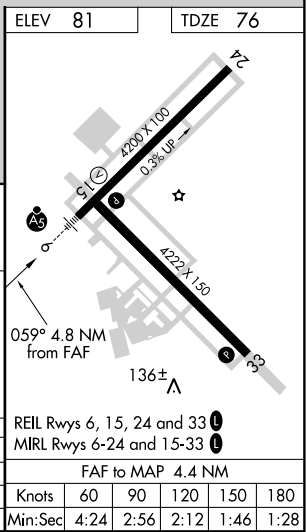
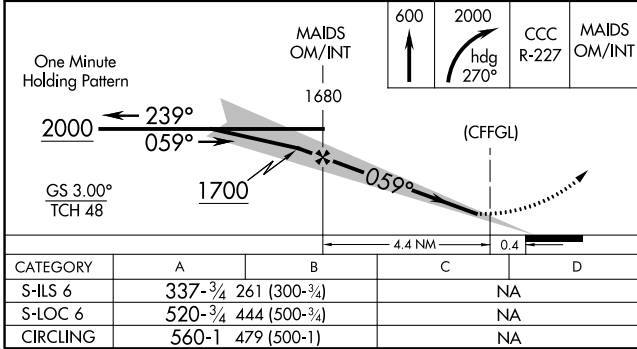
**MISSED APPROACH:** Climb to 600, then climbing right turn to 2000 on heading 270° and CCC VOR/DME R-227 to MAIDS OM/INT and hold, continue climb-in-hold to 2000.

ASOS <b>119.625</b>	NEW YORK APP CON <b>120.05 343.75</b>	CLNC DEL <b>133.2</b>	UNICOM <b>122.8 (CTAF)</b>
------------------------	--	--------------------------	-------------------------------



NE-2, 03 JAN 2019 to 31 JAN 2019

NE-2, 03 JAN 2019 to 31 JAN 2019



SHIRLEY, NEW YORK Amdt 2B 08JAN15	40°49'N-72°52'W	BROOKHAVEN (HWV) <b>ILS or LOC RWY 6</b>
--------------------------------------	-----------------	---

CATEGORY	A	B	C	D
S-ILS 6	337- $\frac{3}{4}$ 261 (300- $\frac{3}{4}$ )		NA	
S-LOC 6	520- $\frac{3}{4}$ 444 (500- $\frac{3}{4}$ )		NA	
CIRCLING	560-1 479 (500-1)		NA	

REIL Rwy 6, 15, 24 and 33	33
MIRL Rwy 6-24 and 15-33	33
FAF to MAP 4.4 NM	
Knots	60 90 120 150 180
Min:Sec	4:24 2:56 2:12 1:46 1:28