

WAAS CH <b>40112</b> <b>W10A</b>	APP CRS <b>102°</b>	Rwy Idg <b>4255</b> TDZE <b>55</b> Apt Elev <b>55</b>
--	------------------------	---

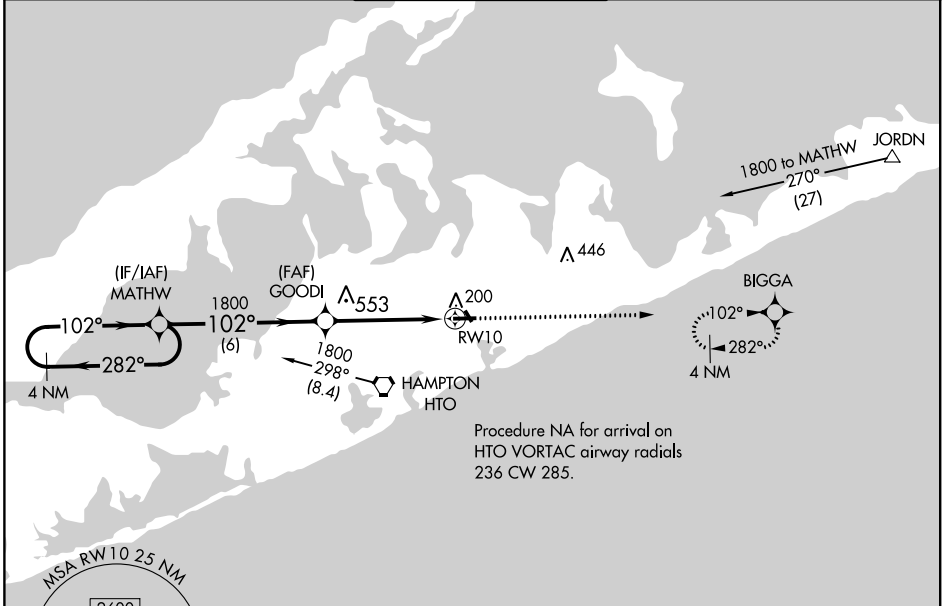
# RNAV (GPS) Z RWY 10

EAST HAMPTON (HTO)

**NA** Baro-VNAV NA when using Westhampton Beach altimeter setting. For uncompensated Baro-VNAV systems, LNAV/VNAV NA below -15°C (5°F) or above 54°C (130°F). DME/DME RNP-0.3 NA. Helicopter visibility reduction below 1 SM NA. When local altimeter setting not received, use Westhampton Beach altimeter setting and increase all DA 45 feet; increase LNAV/VNAV visibility 1/2 mile all Cats. Night landing: Rwy 10, 28 operational VGSI required, remain on or above VGSI glidepath until threshold.

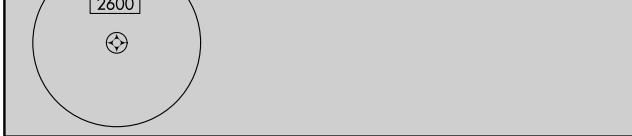
**MISSED APPROACH:**  
Climb to 2000 direct BIGGA and hold.

AWOS-3PT <b>118.075</b>	NEW YORK APP CON <b>125.975 343.65</b>	EAST HAMPTON TOWER ★ <b>125.225 (CTAF) 0</b>	GND CON <b>121.9</b>	CLNC DEL <b>118.95</b>
----------------------------	---	---	-------------------------	---------------------------

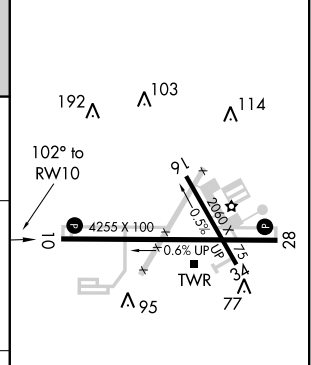
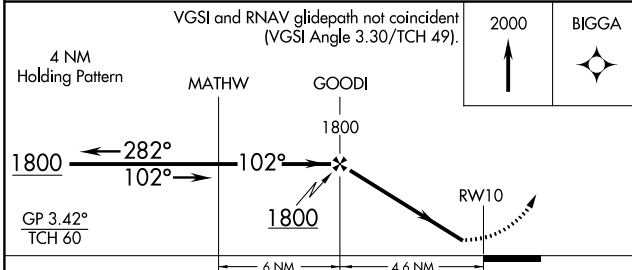


NE-2, 19 JUL 2018 to 16 AUG 2018

NE-2, 19 JUL 2018 to 16 AUG 2018



ELEV 55	TDZE 55
---------	---------



CATEGORY	A	B	C	D
LPV DA		361-1 306 (400-1)		NA
LNAV/VNAV DA		419-1 364 (400-1)		NA

MIRL Rwy 10-28 **0**  
REIL Rwy 10 and 28 **0**★