

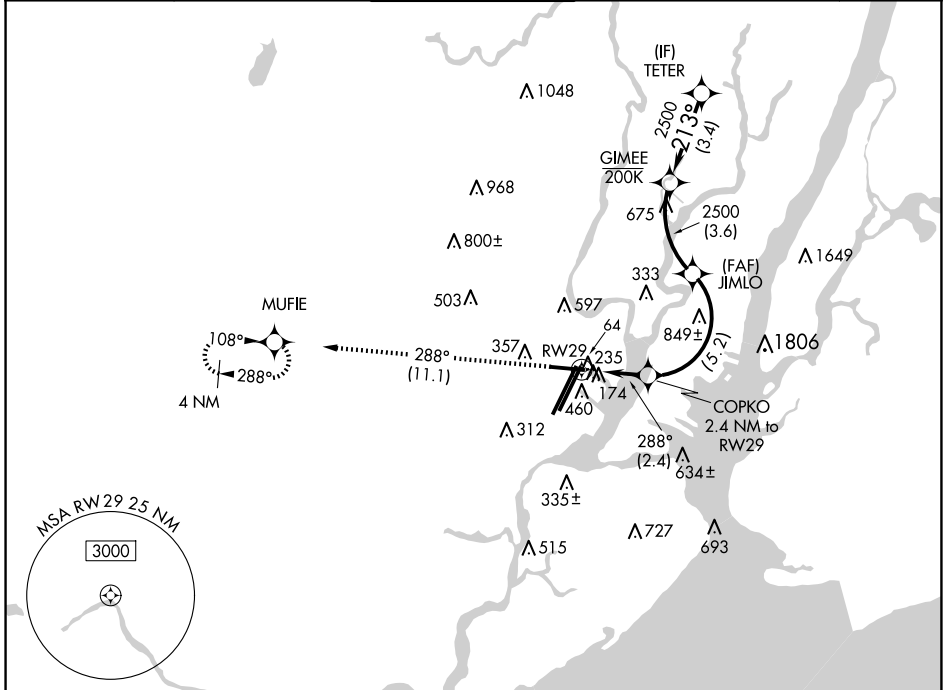
APP CRS	Rwy Idg	<b>6501</b>
<b>288°</b>	TDZE	<b>10</b>
	Apt Elev	<b>18</b>

# RNAV (RNP) Y RWY 29

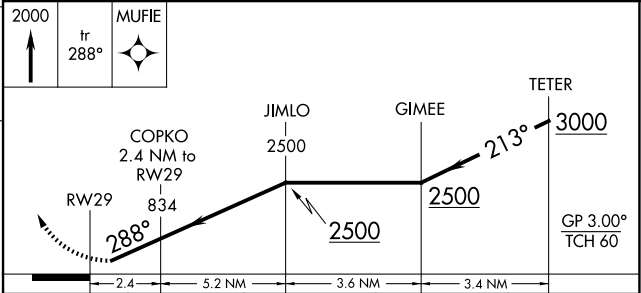
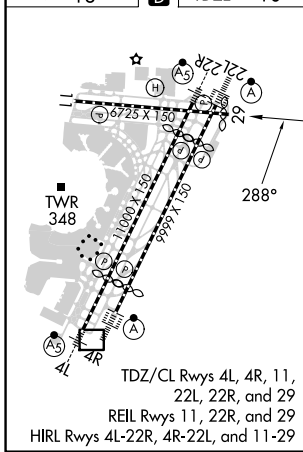
NEWARK LIBERTY INTL (EWR)

RNP AR APCH. RF required.		MISSED APPROACH: Climb to 2000 on track 288° to MUFIE and hold.	
<p>▼ Straight-in Rwy 29 at night, operational VGSI required, remain on or above VGSI glidepath until threshold. For uncompensated Baro-VNAV systems, procedure NA below -12°C or above 54°C.</p> <p>▲NA **Missed approach requires a minimum climb of 417 feet per NM to 800.</p>			

D-ATIS	NEWARK APP CON	NEWARK TOWER	GND CON	CLNC DEL	CPDLC
<b>115.7</b>	<b>134.825</b>	<b>128.55 379.9</b>	<b>118.3 257.6</b>	<b>121.8</b>	<b>118.85</b>



ELEV	<b>18</b>	<b>D</b>	TDZE	<b>10</b>
------	-----------	----------	------	-----------



CATEGORY	A	B	C	D
RNP 0.16 DA		461-1½	451 (500-1½)	
RNP 0.30 DA		** 530-1¼	520 (600-1¼)	
RNP 0.30 DA		573-1⅞	563 (600-1⅞)	

**AUTHORIZATION REQUIRED**

NE-2, 15 MAY 2025 to 12 JUN 2025

NE-2, 15 MAY 2025 to 12 JUN 2025