

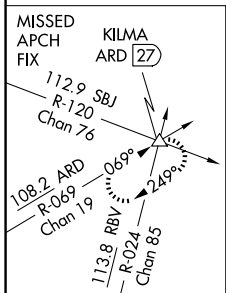
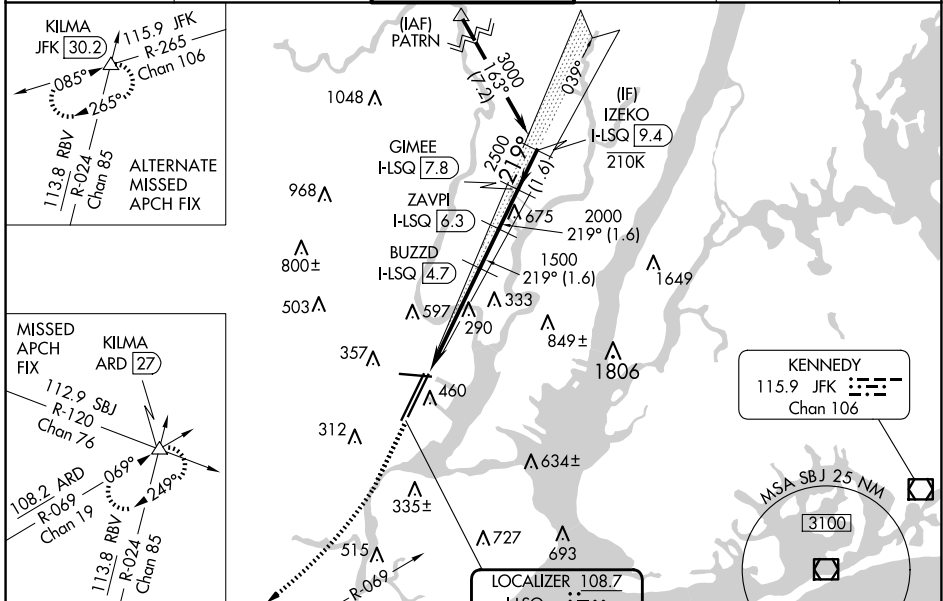
LOC/DME I-LSQ	APP CRS	Rwy Idg	8205
108.7	219°	TDZE	11
Chan 24		Apt Elev	17

ILS RWY 22L (CAT II & III)

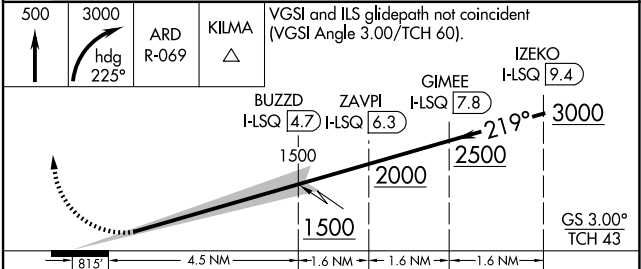
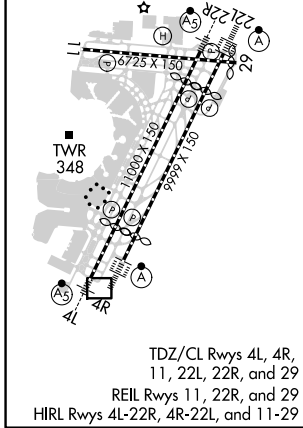
NEWARK LIBERTY INTL (EWR)

RNP APCH - GPS.	ALSX-2	MISSED APPROACH: Climb to 500 then climbing right turn to 3000 on heading 225° and ARD VOR/DME R-069 to KILMA INT/ARD 27 DME and hold.
Aircraft not GPS equipped - RADAR required for procedure entry. DME required.		
<p>▼ CAT II: RVR 1000 authorized with specific OPSPEC, MSPEC, or LOA approval and use of autoland or HUD to touchdown.</p>		

D-ATIS	NEWARK APP CON	NEWARK TOWER	GND CON	CLNC DEL	CPDLC
115.7 134.825	128.55 379.9	118.3 257.6	121.8	118.85	



ELEV	17	D	TDZE	11
------	----	---	------	----



CATEGORY	A	B	C	D
S-ILS 22L	CAT II RA 102/12 100 DA 111			
S-ILS 22L	CAT III RVR 06			

CATEGORY II & III ILS - SPECIAL AIRCREW & AIRCRAFT CERTIFICATION REQUIRED

NE-2, 15 MAY 2025 to 12 JUN 2025

NE-2, 15 MAY 2025 to 12 JUN 2025