

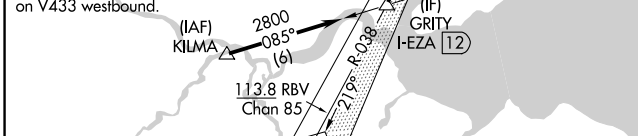
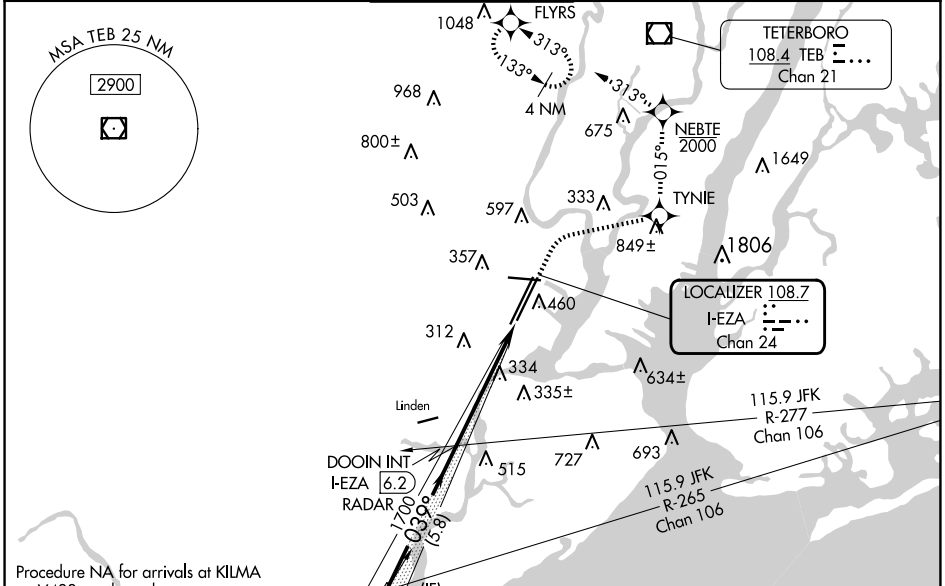
LOC/DME I-EZA <b>108.7</b> Chan <b>24</b>	APP CRS <b>039°</b>	Rwy Idg TDZE Apt Elev	4R <b>8809</b>	4L <b>8459</b>
---	------------------------	-----------------------------	-------------------	-------------------

# ILS or LOC RWY 4R

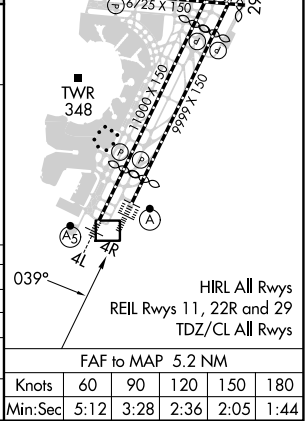
NEWARK LIBERTY INTL (EWR)

RNP APCH - GPS. RADAR required.	4R ALSF-2	4L MALS R	MISSED APPROACH: (Do not exceed 210K until NEBTE) Climb to 560 then climbing right turn to 2000 direct TYNIE and left turn on track 015° to NEBTE, cross NEBTE at or below 2000 then climbing left turn to 3000 on track 313° to FLYRS and hold, continue climb-in-hold to 3000.
When Circling to Rwy 29 at night, operational VGSI required, remain on or above VGSI glidepath until threshold. For inop ALS, increase Sidestep 4L Cat C visibility to 1½ SM.			

D-ATIS <b>115.7</b>	NEWARK APP CON <b>134.825</b>	NEWARK TOWER <b>128.55</b>	NEWARK TOWER <b>379.9</b>	NEWARK TOWER <b>118.3</b>	NEWARK TOWER <b>257.6</b>	GND CON <b>121.8</b>	CLNIC DEL <b>118.85</b>	CPDLC
------------------------	----------------------------------	-------------------------------	------------------------------	------------------------------	------------------------------	-------------------------	----------------------------	-------



ELEV 17	<b>D</b>	TDZE 4R 11
		TDZE 4L 10



GRITY I-EZA 12	560	2000	TYNIE	NEBTE	3000	FLYRS
	↑	↻	↻ tr 015°	↻ 2000	↻ tr 313°	↻
2800	DOOIN INT I-EZA 6.2					
	VGSI and ILS glidepath not coincident (VGSI Angle 2.95/TCH 71).					
	DOOIN INT I-EZA 1700		I-EZA 2.7		I-EZA 1	
GS 2.95° TCH 55	5.8 NM      3.6 NM      1.7 NM					
CATEGORY	A	B	C	D		
S-ILS 4R	211/18      200 (200-½)					
S-LOC 4R	600/24	589 (600-½)	600-1¼	589 (600-1¼)		
SIDESTEP RWY 4L	600/55	590 (600-1)	600-1¼	590 (600-1¼)	600-1½	590 (600-1½)
CIRCLING	760-1	743 (800-1)	900-2¾	883 (900-2¾)	900-3	883 (900-3)

NE-2, 15 MAY 2025 to 12 JUN 2025

NE-2, 15 MAY 2025 to 12 JUN 2025