

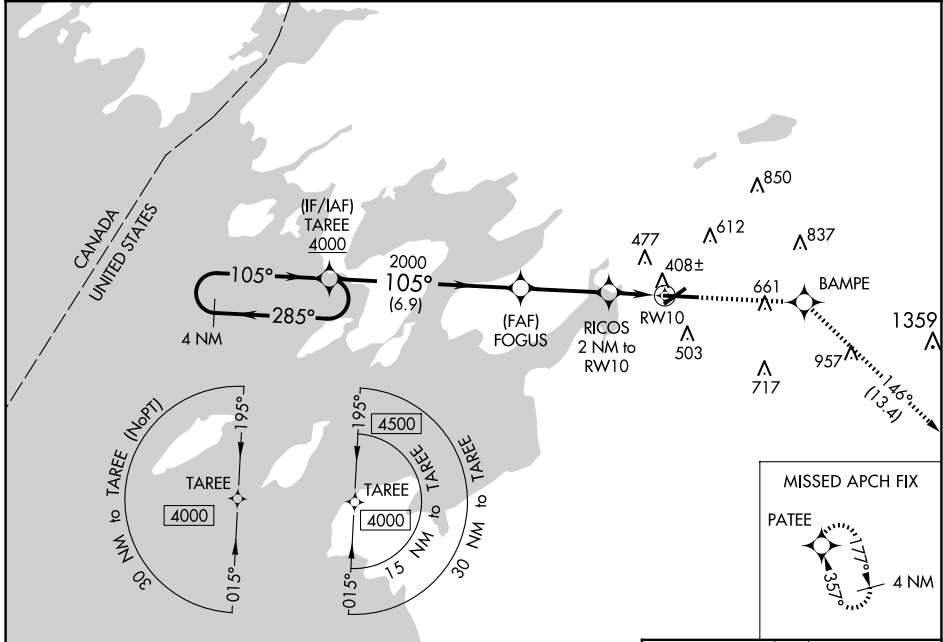
WAAS CH 53522 W10A	APP CRS 105°	Rwy Idg TDZE Apt Elev	7001 318 331
--	------------------------	-----------------------------	---

RNAV (GPS) RWY 10

WATERTOWN INTL (ART)

RNP APCH.	MISSED APPROACH: Climb to 3600 direct BAMPE and on track 146° to PATEE and hold.
<p>▽</p> <p>▲</p> <p>For uncompensated Baro-VNAV systems, LNAV/VNAV NA below -20°C or above 54°C. Rwy 10 helicopter visibility reduction below 3/4 SM NA.</p>	

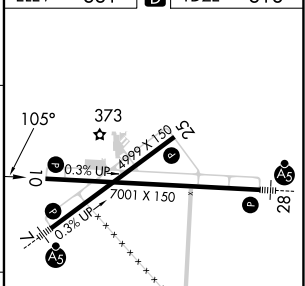
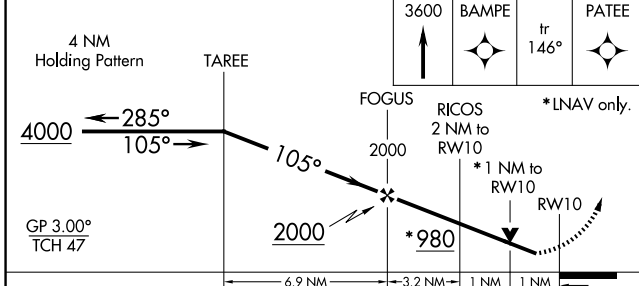
ASOS 132.325	KGTB ATIS 119.525	WHEELER-SACK APP CON 124.875 307.125	CLNC DEL 120.8	UNICOM 123.0 (CTAF) 0
------------------------	-----------------------------	--	--------------------------	---------------------------------



NE-2, 15 MAY 2025 to 12 JUN 2025

NE-2, 15 MAY 2025 to 12 JUN 2025

ELEV	331	D	TDZE	318
------	-----	----------	------	-----



CATEGORY	A	B	C	D
LPV DA		568-3/4	250 (300-3/4)	
LNAV/VNAV DA		578-3/4	260 (300-3/4)	
LNAV MDA		660-1	342 (400-1)	
C CIRCLING	960-1	629 (700-1)	980-1 3/4 649 (700-1 3/4)	1080-2 1/2 749 (800-2 1/2)

HIRL Rwy 7-25 0
MIRL Rwy 10-28 0