

VORTAC ALB	APP CRS	Rwy Idg	<b>6007</b>
<b>115.3</b>	<b>275°</b>	TDZE	<b>285</b>
Chan <b>100</b>		Apt Elev	<b>285</b>

# VOR RWY 28

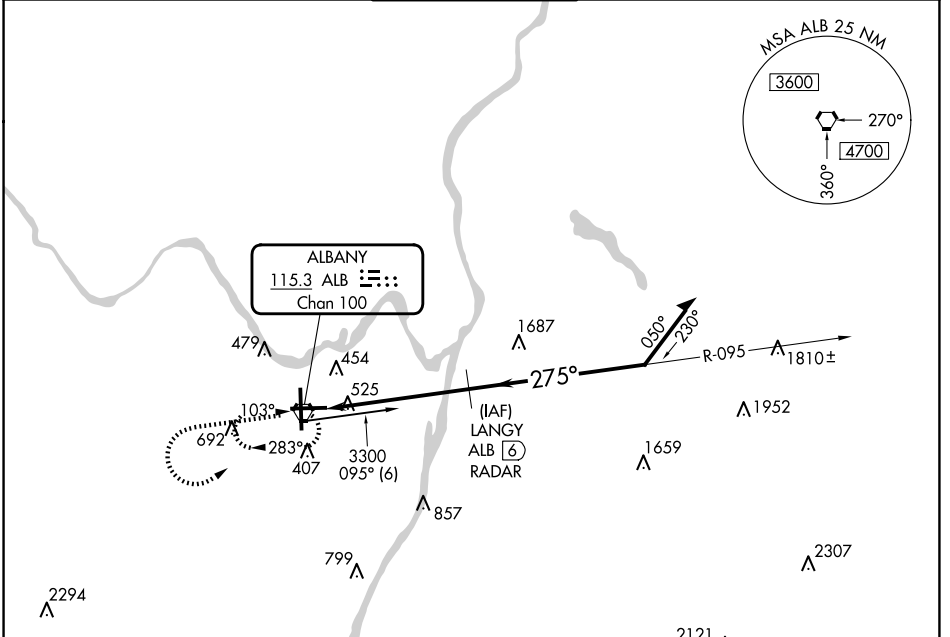
ALBANY INTL (ALB)

DME or RADAR required.

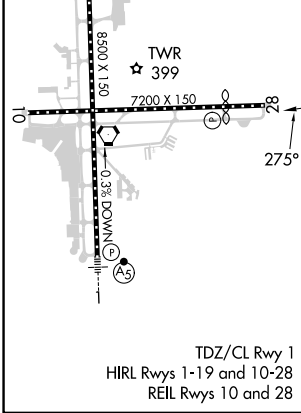
**▼** Circling NA West of Rwy 1-19. Straight-in Rwy 28 NA at night, Circling Rwy 10, 28 NA at night. Rwy 28 helicopter visibility reduction below 1 SM NA.

MISSED APPROACH: Climb to 3000, then climbing left turn to 4000 direct ALB VORTAC and hold.

D-ATIS	ALBANY APP CON	ALBANY TOWER	GND CON	CLNC DEL
<b>120.45</b>	<b>132.825 307.2</b>	<b>119.5 257.8</b>	<b>121.7 348.6</b>	<b>127.50</b>



ELEV 285	<b>D</b>	TDZE 285
----------	----------	----------



3000 4000 ALB

VGSI and descent angles not coincident (VGSI Angle 3.22/TCH 53).

LANGY ALB (6) /RADAR

Remain within 10 NM

095° 3300

275° 2300

3.42° TCH 63

0.6 5.4 NM

CATEGORY	A	B	C	D
S-28	780-1 495 (500-1)		780-1¼ 495 (500-1¼)	780-1½ 495 (500-1½)
<b>C</b> CIRCLING	820-1 535 (600-1)		860-1½ 575 (600-1½)	960-2¼ 675 (700-2¼)

NE-2, 17 APR 2025 to 15 MAY 2025

NE-2, 17 APR 2025 to 15 MAY 2025