

WAAS CH <b>45544</b> <b>W24A</b>	APP CRS <b>241°</b>	Rwy Idg TDZE Apt Elev	<b>3471</b> <b>790</b> <b>790</b>
--	------------------------	-----------------------------	---

# RNAV (GPS) RWY 24

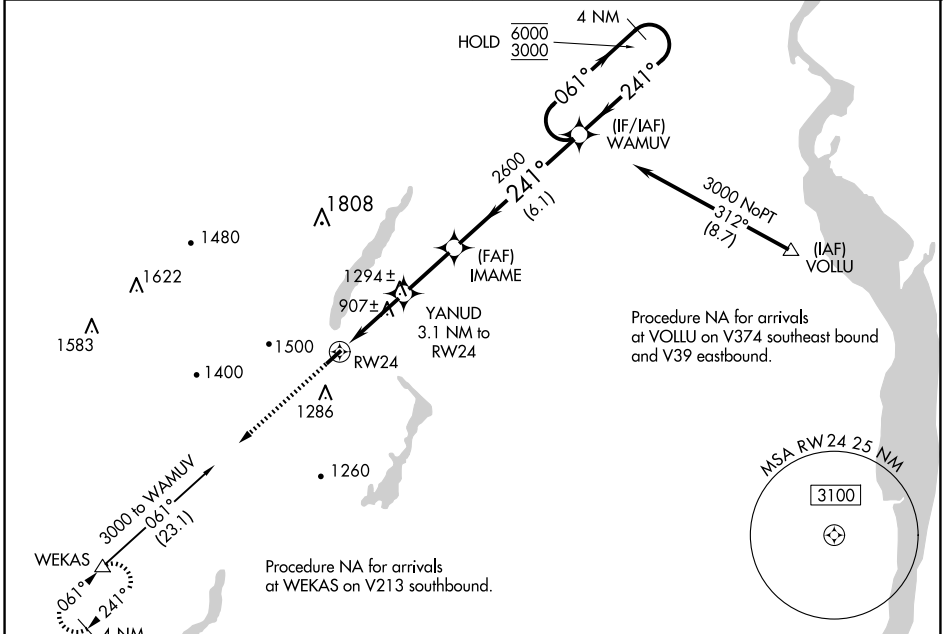
GREENWOOD LAKE (4N1)

RNP APCH - GPS.

▼ Obtain local altimeter setting on CTAF; when not received, use Sussex altimeter setting.  
 ▲ NA Rwy 24 helicopter visibility reduction below 1 SM NA. Procedure NA at night.

MISSED APPROACH: Climb to 3000 direct WEKAS and hold.

NEWARK APP CON <b>127.6 379.9</b>	CTAF <b>122.9 0</b>
--------------------------------------	------------------------



ELEV 790	TDZE 790	3000	WEKAS	Visual Segment - Obstacles.	4 NM
		↑	△		Holding Pattern
CATEGORY	A	B	C	D	
LP MDA	1160-1	370 (400-1)			NA
LNAV MDA	1560-1	1560-1¼			NA
CIRCLING	1600-1	1720-1¼			NA
	810 (900-1)	930 (1000-1¼)			
SUSSEX ALTIMETER SETTING MINIMUMS					
LP MDA	1240-1	450 (500-1)			NA
LNAV MDA	1640-1	1640-1¼			NA
CIRCLING	1700-1¼	1820-1½			NA
	910 (1000-1¼)	1030 (1100-1½)			

NE-2, 15 MAY 2025 to 12 JUN 2025

NE-2, 15 MAY 2025 to 12 JUN 2025