

WAAS CH <b>77636</b> <b>W19A</b>	APP CRS <b>187°</b>	Rwy Idg <b>4292</b> TDZE <b>491</b> Apt Elev <b>492</b>
--	------------------------	---

# RNAV (GPS) RWY 19

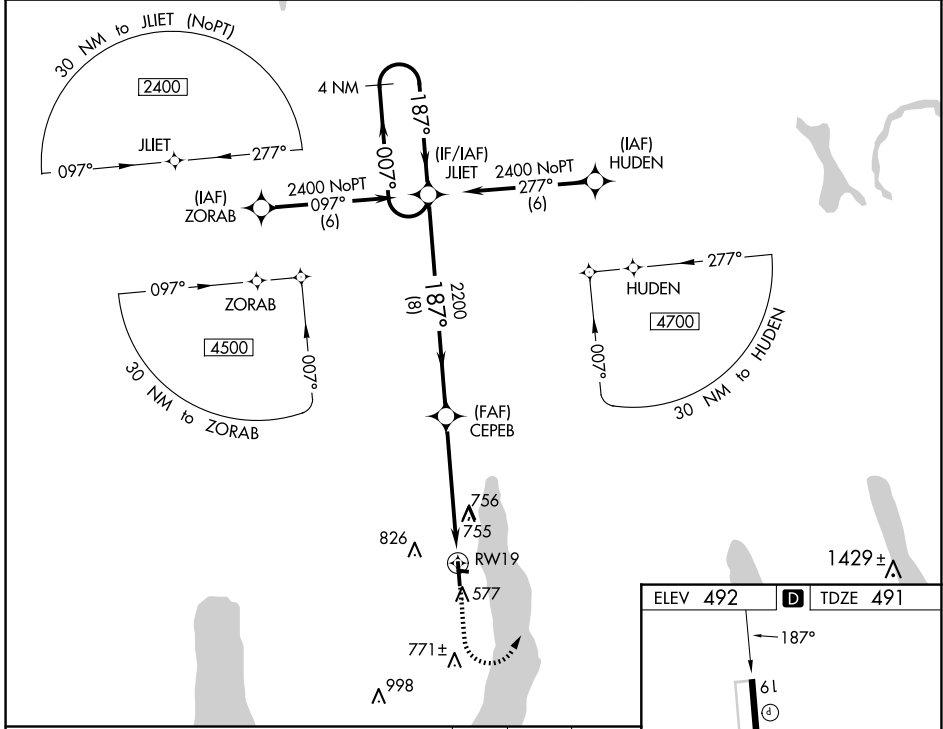
FINGER LAKES RGNL (ØG7)

**▽** **Δ** NA

For uncompensated Baro-VNAV systems, LNAV/VNAV NA below -15°C (5°F) or above 54°C (130°F). Baro-VNAV and VDP NA when using Syracuse altimeter setting. Rwy 19 helicopter visibility reduction below 3/4 SM NA. DME/DME RNP-0.3 NA. When local altimeter setting not received, use Syracuse altimeter setting and increase all LPV DA to 856 feet, LNAV/VNAV DA to 1226 feet and all MDA 100 feet; increase LPV all Cats visibility 1/4 SM and LNAV/VNAV all Cats visibility 1/2 SM.

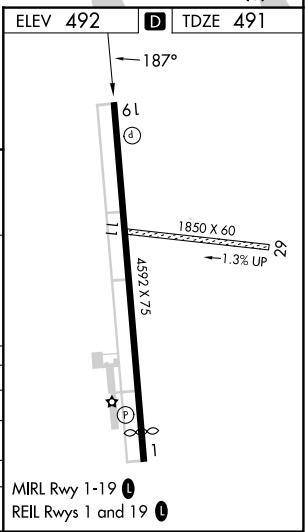
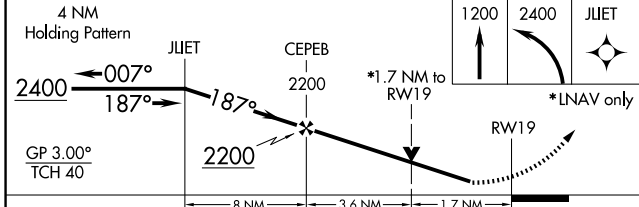
**MISSED APPROACH:**  
Climb to 1200 then climbing left turn to 2400 direct JLIET and hold.

AWOS-3 <b>120.0</b>	SYRACUSE APP CON <b>126.125 269.125</b>	ROCHESTER APP CON <b>119.55 269.6 (W-NW)</b>	ELMIRA APP CON * <b>124.3 257.8 (SW-SE)</b>	UNICOM <b>122.8 (CTAF) Ø</b>
------------------------	--	---	--	---------------------------------



NE-2, 07 AUG 2025 to 04 SEP 2025

NE-2, 07 AUG 2025 to 04 SEP 2025



CATEGORY	A	B	C	D
LPV DA	770-1	279 (300-1)		NA
LNAV/VNAV DA	1140-2½	649 (700-2½)		NA
LNAV MDA	1060-1	569 (600-1)		NA
<b>C</b> CIRCLING	1060-1 568 (600-1)	1180-1 688 (700-1)		NA