

| | | |
|---|------------------------|---|
| LOC/DME I-RLU 110.5 Chan 42 | APP CRS 047° | Rwy Idg 5500 TDZE 309 Apt Elev 333 |
|---|------------------------|---|

ILS or LOC/DME RWY 5

WATERVILLE RGNL (WV L)

⚠ Night landing; Rwy 14 NA. Helicopter visibility reduction below 3/4 SM NA. VDP NA when using Augusta altimeter setting. When local altimeter setting not received, use Augusta altimeter setting and increase S-ILS 5 DA to 544 feet; increase all MDAs 40 feet and increase S-LOC 5 Cats C/D and Circling Cat D visibility 1/4 SM. Inop table does not apply to S-ILS 5. For inop MALSF, increase S-LOC 5 Cat D visibility to 1 mile. For inop MALSF, when using Augusta altimeter setting, increase S-ILS 5 all Cats visibility to 3/8 mile and S-LOC 5 Cat C/D visibility to 1 1/8 mile. Autopilot coupled approach NA below 600.

MALSF

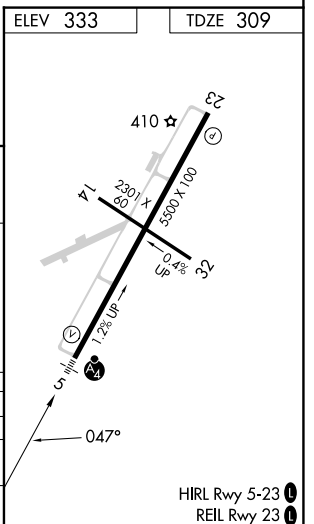
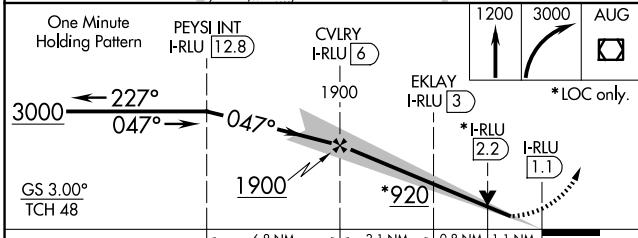
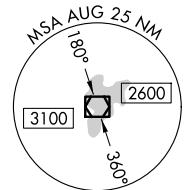
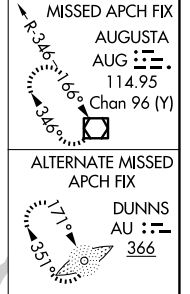
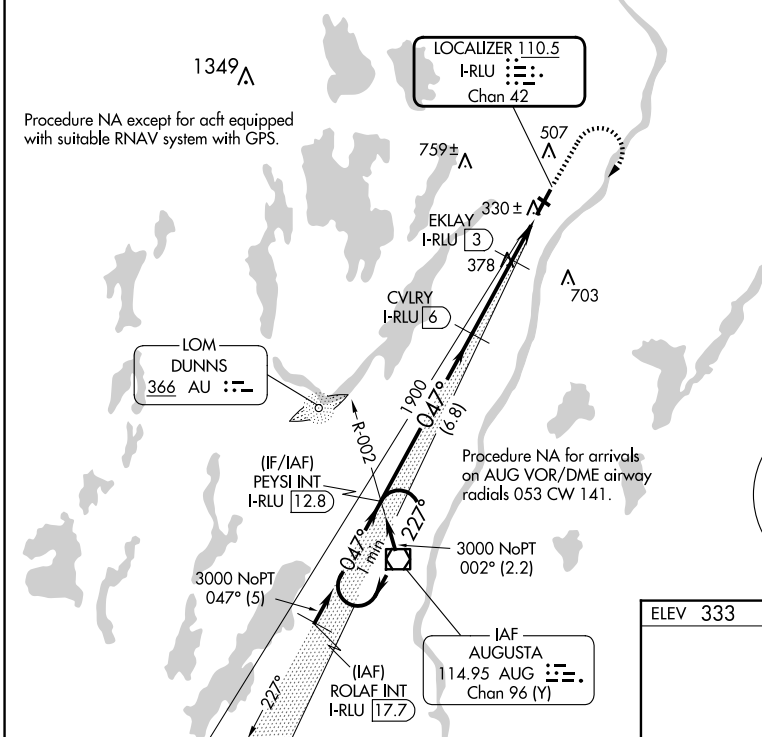
MISSED APPROACH:
Climb to 1200 then climbing right turn to 3000 direct AUG VOR/DME and hold.

AWOS-3PT
118.375

PORTLAND APP CON ★
128.35 299.2

CLNC DEL
124.6 299.2

UNICOM
122.7 (CTAF) 0



| CATEGORY | A | B | C | D |
|----------|-------------------|-----------------------|----------------------------|----------------------------|
| S-ILS 5 | | 509-3/4 200 (200-3/4) | | |
| S-LOC 5 | | 680-3/4 371 (400-3/4) | | |
| CIRCLING | 860-1 527 (600-1) | | 1100-2 1/4 767 (800-2 1/4) | 1120-2 1/2 787 (800-2 1/2) |

NE-1, 15 MAY 2025 to 12 JUN 2025

NE-1, 15 MAY 2025 to 12 JUN 2025