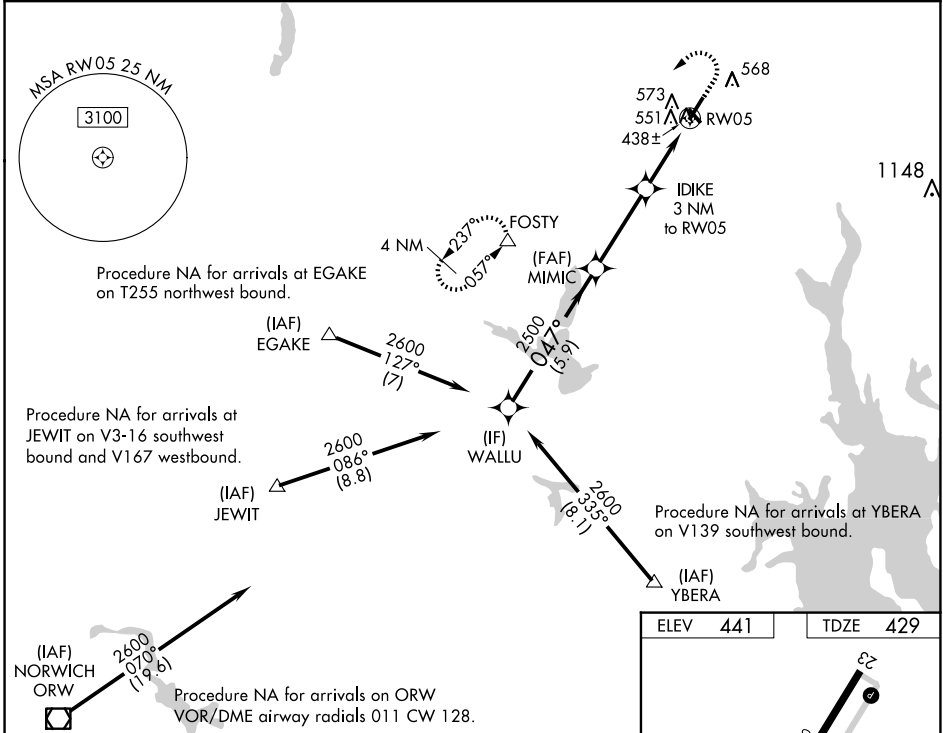


WAAS CH 50231 W05A	APP CRS 047°	Rwy Idg TDZE 429 Apt Elev 441	5000
--	------------------------	---	-------------

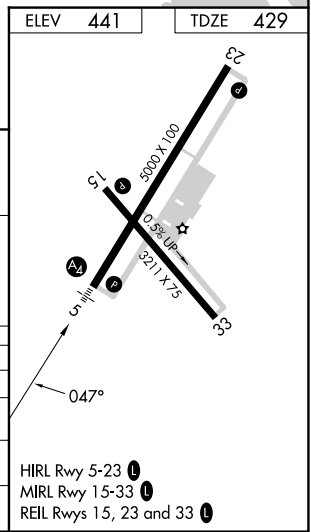
RNAV (GPS) RWY 5

NORTH CENTRAL STATE (SF'Z)

RNP APCH - GPS.		MALS	MISSED APPROACH: Climb to 2000 then climbing left turn to 2500 direct FOSTY and hold.
<p>⚠ Circling Rwy 15, 33 NA at night. For inoperative MALS, increase LPV all Cats visibility to 3/8 mile. For inop ALS, increase LPV all Cats visibility to 3/8 SM and LNAV/VNAV all Cats visibility to 1 1/8 SM. For uncompensated Baro-VNAV systems, LNAV/VNAV NA below -15°C or above 54°C.</p>			
AWOS-3PT 120.775	PROVIDENCE APP CON * 123.675 244.875	CLNC DEL 124.35	UNICOM 123.075 (CTAF) 0



WALLU		MIMIC		IDIKE		FOSTY	
2600		2500		2500		2000	
0.47°		0.47°		1.1 NM to RW05		1.1 NM to RW05	
GP 3.00°		*1420		3.4 NM		1.9 NM	
TCH 52		5.9 NM		1.1 NM		1.1 NM	
CATEGORY	A	B	C	D			
LPV DA	700-3/4	271 (300-3/4)		NA			
LNAV/VNAV DA	835-1	406 (400-1)		NA			
LNAV MDA	820-3/4	391 (400-3/4)	820-7/8	391 (400-7/8)			
CIRCLING	900-1	459 (500-1)	900-1 1/2	459 (500-1 1/2)			



NE-1, 15 MAY 2025 to 12 JUN 2025

NE-1, 15 MAY 2025 to 12 JUN 2025

HIRL Rwy 5-23 0
MIRL Rwy 15-33 0
REIL Rwy 15, 23 and 33 0