

LOC/DME I-SFZ	APP CRS	Rwy Idg	5000
111.9	047°	TDZE	429
Chan 56		Apt Elev	441

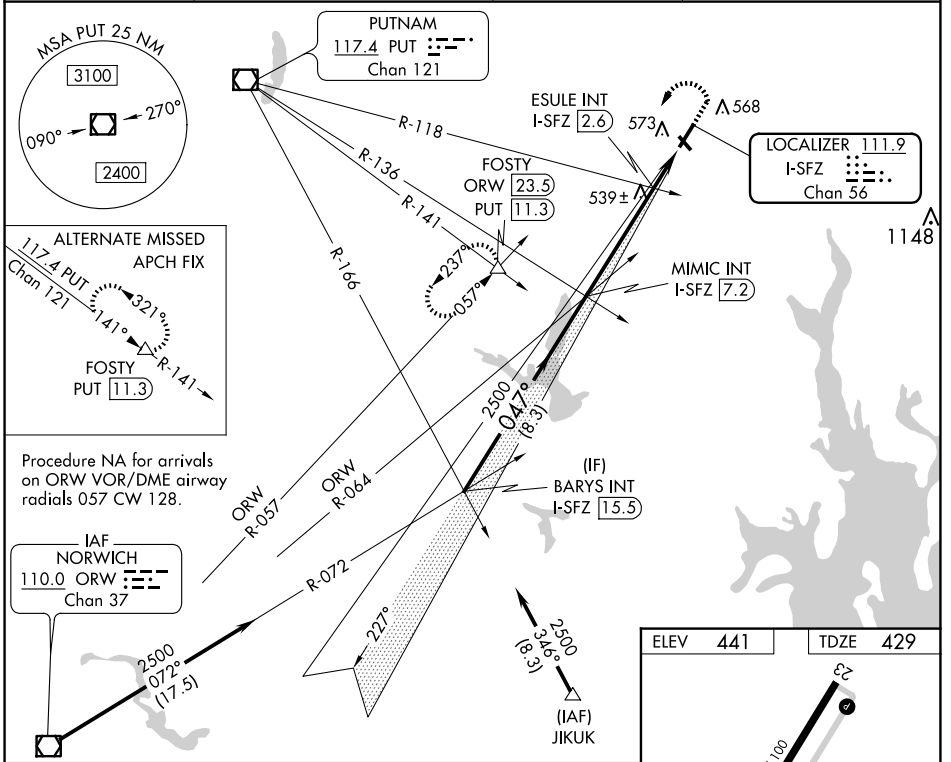
LOC RWY 5

NORTH CENTRAL STATE (SF/Z)

NA Circling Rwy 15, 33 NA at night. VDP NA with Providence altimeter setting. When local altimeter setting not received, use Providence altimeter setting and increase all MDA 100 feet; increase S-5 Cat C and Circling Cat C visibility ¼ mile, and ESULE fix minimums S-5 Cat C visibility ¼ mile.

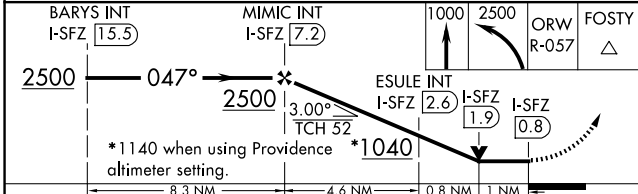
MALS MISSED APPROACH: Climb to 1000 then climbing left turn to 2500 on ORW VOR/DME R-057 to FOSTY INT/ ORW 23.5 DME and hold.

AWOS-3PT 120.775	PROVIDENCE APP CON ★ 123.675 244.875	CLNC DEL 124.35	UNICOM 123.075 (CTAF) 0
----------------------------	--	---------------------------	-----------------------------------

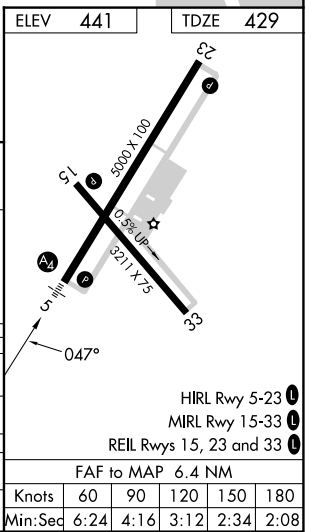


Procedure NA for arrivals on ORW VOR/DME airway radials 057 CW 128.

IAF NORWICH
110.0 ORW
Chan 37



CATEGORY	A	B	C	D
S-5	1040-¾	611 (600-¾)	1040-1½	NA
C CIRCLING	1040-1	599 (600-1)	1040-1¾	NA
ESULE FIX MINIMUMS (DUAL VOR RECEIVERS OR DME REQUIRED)				
S-5	800-¾	371 (400-¾)	800-7/8	NA
C CIRCLING	900-1	459 (500-1)	900-1½	NA



NE-1, 15 MAY 2025 to 12 JUN 2025

NE-1, 15 MAY 2025 to 12 JUN 2025

ELEV	441	TDZE	429
<p>HIRL Rwy 5-23 0</p> <p>MIRL Rwy 15-33 0</p> <p>REIL Rws 15, 23 and 33 0</p> <p>FAF to MAP 6.4 NM</p>			
Knots	60	90	120 150 180
Min:Sec	6:24	4:16	3:12 2:34 2:08