

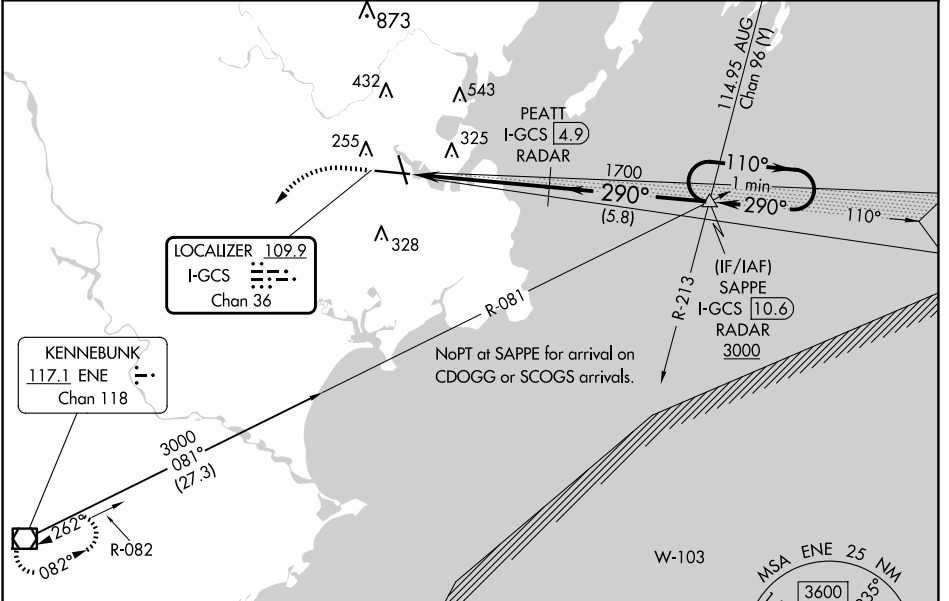
LOC/DME I-GCS 109.9 Chan 36	APP CRS 290°	Rwy Idg 7200
	TDZE 56	
	Apt Elev 76	

ILS RWY 29 (SA CAT I & II)

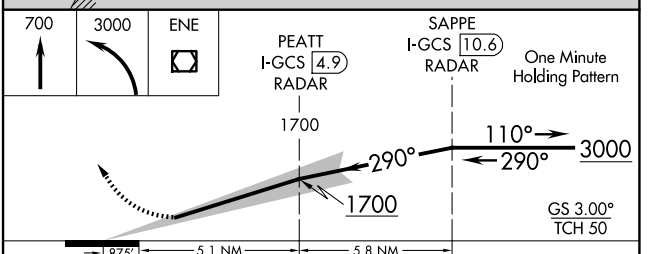
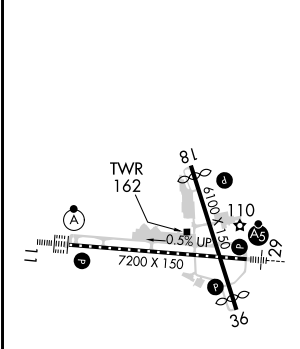
PORTLAND INTL JETPORT (PWM)

<p>⚠ DME or RADAR required. DME required when Portland approach control closed. Procedure NA when control tower closed.</p> <p>SA CAT I: Requires specific OPSPEC, MSPEC, or LOA approval and use of HUD to DH.</p> <p>SA CAT II: Reduced lighting requires specific OPSPEC, MSPEC, or LOA approval and use of Autoland or HUD to touchdown.</p>	<p>MALSR</p>	<p>MISSED APPROACH: Climb to 700 then climbing left turn to 3000 direct ENE VOR/DME and hold.</p>
---	--------------	---

ATIS 119.05	PORTLAND APP CON ★ 119.75 269.35	PORTLAND TOWER ★ 120.9 (CTAF) 257.8	GND CON 121.9	CLNC DEL 121.9	UNICOM 122.95
-----------------------	--	---	-------------------------	--------------------------	-------------------------



ELEV 76	D	TDZE 56
---------	----------	---------



CATEGORY	A	B	C	D
S-ILS 29	SA CAT I	RA 206/14	150 DA 206	
S-ILS 29	SA CAT II	RA 146/12	100 DA 156	

SA CATEGORY I & II ILS - SPECIAL AIRCREW & AIRCRAFT CERTIFICATION REQUIRED

NE-1, 15 MAY 2025 to 12 JUN 2025

NE-1, 15 MAY 2025 to 12 JUN 2025