

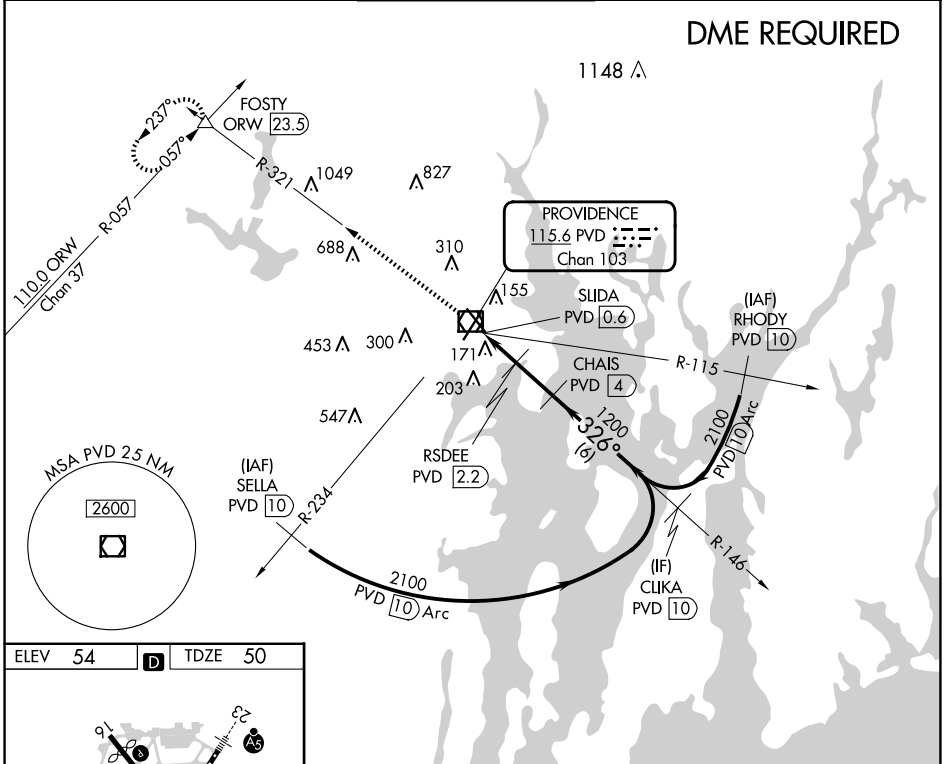
VOR/DME PVD <b>115.6</b> Chan <b>103</b>	APP CRS <b>326°</b>	Rwy Idg TDZE Apt Elev	<b>6081</b> <b>50</b> <b>54</b>
--	------------------------	-----------------------------	---------------------------------------

# VOR Z RWY 34

RHODE ISLAND TF GREEN INTL (PVD)

<b>⚠</b> Rwy 34 helicopter visibility reduction below RVR 4000 NA. <b>⚠</b> DME required. For inop ALS, increase Cat A/B visibility to RVR 5500, and Cat C/D to RVR 6000.	MALSR 	MISSED APPROACH: Climb to 2500 on PVD VOR/DME R-321 to FOSTY INT/ORW 23.5 DME and hold.
--	-----------	---

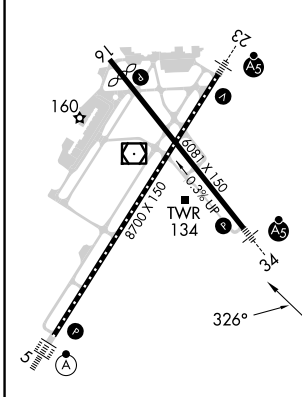
D-ATIS <b>124.2</b>	PROVIDENCE APP CON * <b>123.675 244.875</b>	PROVIDENCE TOWER * <b>120.7</b> (CTAF) <b>0 257.8</b>	GND CON <b>121.9 348.6</b>	CLNC DEL <b>126.65 348.6</b>
------------------------	--	--	-------------------------------	---------------------------------



NE-1, 15 MAY 2025 to 12 JUN 2025

NE-1, 15 MAY 2025 to 12 JUN 2025

ELEV 54	<b>D</b>	TDZE 50
---------	----------	---------



TDZ/CL Rwy 5 **Ⓛ**  
REIL Rwy 16 **Ⓛ**  
HIRL Rwy 5-23 and 16-34 **Ⓛ**

2500	PVD R-321	FOSTY		
			CHAIS PVD 4	CLIKA PVD 10
	PVD VOR/DME	PVD 1.7	RSDEE PVD 2.2	
	SLIDA PVD 0.6			
			3.10° TCH 60	
		600	1200	2100
	1.1 NM	0.5 NM	1.8 NM	6 NM
CATEGORY	A	B	C	D
S-34		440/40	390 (400-3/4)	
CIRCLING	560-1	640-1	640-1½	860-2½
	506 (600-1)	586 (600-1)	586 (600-1½)	806 (900-2½)