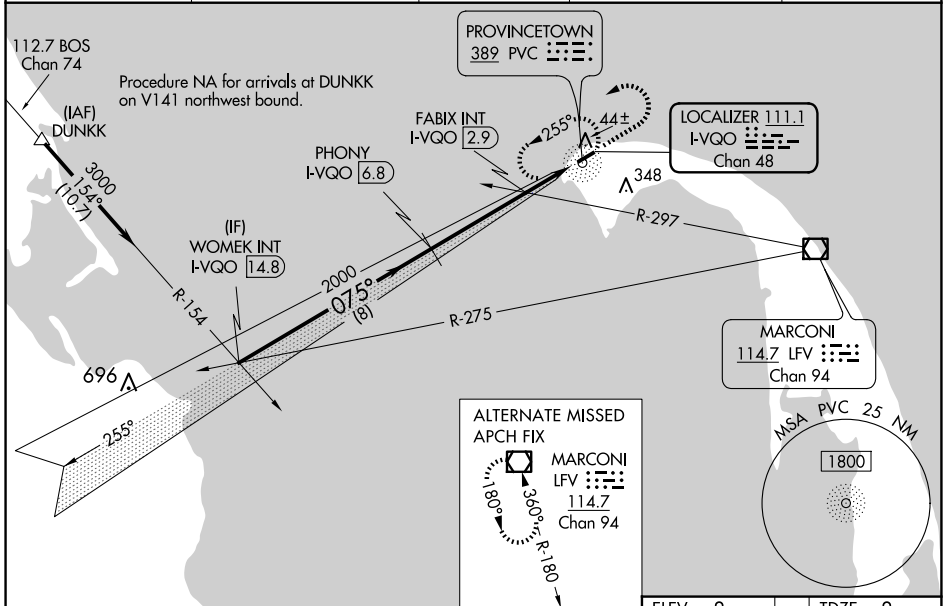


LOC/DME I-VQO 111.1 Chan 48	APP CRS 075°	Rwy Idg 3502 TDZE 8 Apt Elev 8
--	------------------------	---

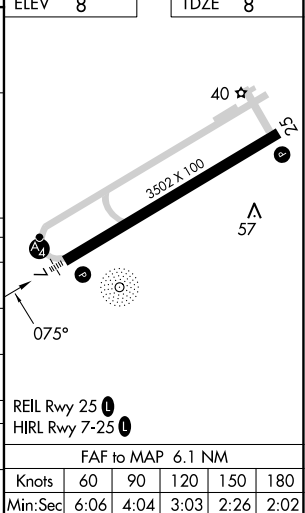
ILS or LOC RWY 7

PROVINCETOWN MUNI (PVC)

DME required for LOC only, ADF.		MALSF	MISSED APPROACH: Climb to 800 then climbing left turn to 2000 direct PVC NDB and hold, continue climb-in-hold to 2000.
AWOS-3PT 119.275	BOSTON APP CON 118.2	CLNC DEL 120.65	UNICOM 122.8 (CTAF) 122.85



	WOMEK INT I-VQO 14.8	PHONY I-VQO 6.8	FABIX INT I-VQO 2.9	I-VQO 1.5	I-VQO 0.7
	3000	2000	2000	2000	2000
	075°	075°	075°	075°	075°
	8 NM	3.9 NM	1.3 NM	0.9 NM	
GS 3.00° TCH 40	# 740 using Hyannis altimeter setting.				
	* I-VQO * LOC only				
CATEGORY	A	B	C	D	
S-ILS 7	208-3/4	200 (200-3/4)		NA	
S-LOC 7	660-3/4	652 (700-3/4)		NA	
CIRCLING	660-1	652 (700-1)		NA	
FABIX FIX MINIMUMS (DUAL VOR RECEIVERS OR DME REQUIRED)					
S-LOC 7	320-3/4	312 (400-3/4)		NA	
CIRCLING	460-1 452 (500-1)	660-1 652 (700-1)		NA	



REIL Rwy 25				
HIRL Rwy 7-25				
FAF to MAP 6.1 NM				
Knots	60	90	120	150
Min:Sec	6:06	4:04	3:03	2:26

NE-1, 15 MAY 2025 to 12 JUN 2025

NE-1, 15 MAY 2025 to 12 JUN 2025