

VOR/DME PQI	APP CRS	Rwy Idg	7441
116.4	180°	TDZE	534
Chan 111		Apt Elev	534

VOR RWY 19

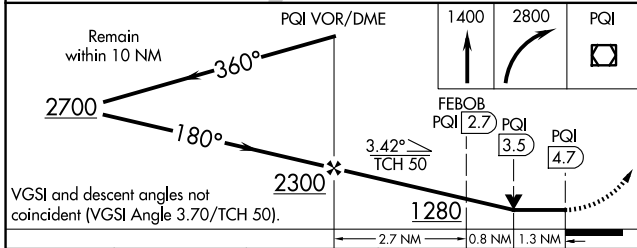
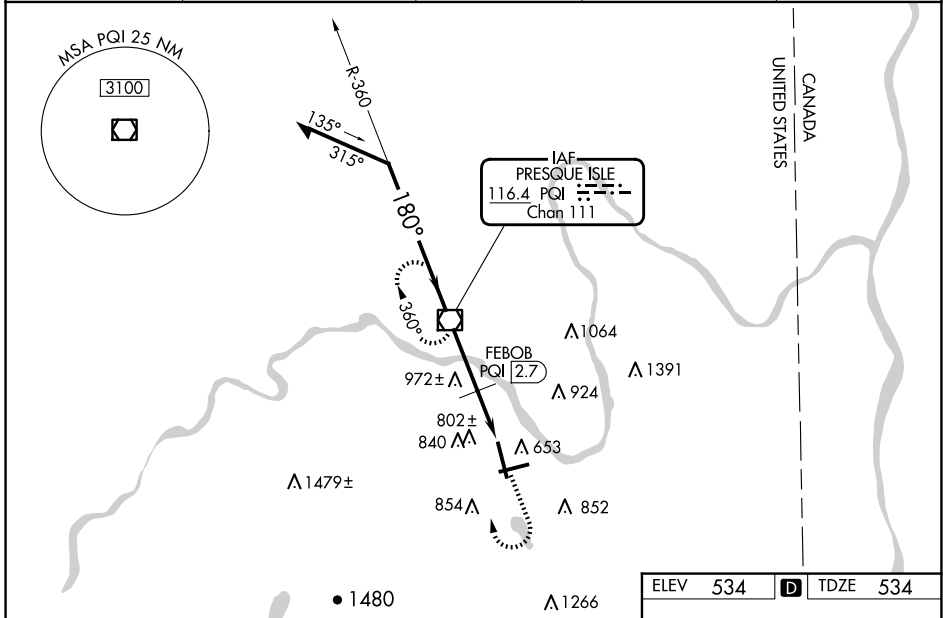
PRESQUE ISLE INTL (PQI)

DME required.

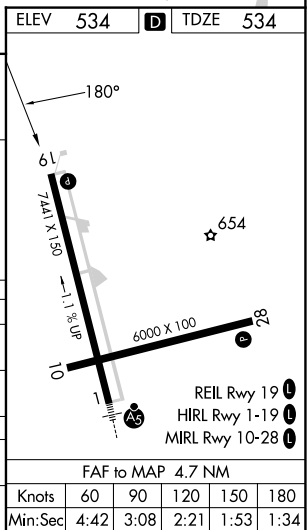
⚠ Rwy 19 helicopter visibility reduction below 3/4 SM NA. When local altimeter setting not received, use HUL altimeter setting: increase all MDAs 100 feet and S-19 visibility Cats C and D 1/2 SM, and Circling visibility Cats A and D 1/4 SM and Cat C 1/2 SM. FEBOB Fix minimums: increase S-19 visibility Cats C and D 1/4 SM, and Circling visibility Cat C 1/2 SM and Cat D 1/4 SM. VDP NA with HUL altimeter setting. Circling Rwy 10 NA at night.

⚠ MISSED APPROACH: Climb to 1400 then climbing right turn to 2800 direct PQI VOR/DME and hold, continue climb-in-hold to 2800.

AWOS-3PT	BOSTON CENTER	CLNC DEL	UNICOM	
118,025	124.75 239.05	121.6	122.8 (CTAF)	122.6



CATEGORY	A	B	C	D
S-19	1280-1 746 (800-1)	1280-1¼ 746 (800-1¼)	1280-2¼ 746 (800-2¼)	1280-2½ 746 (800-2½)
C CIRCLING	1280-1 746 (800-1)	1280-1¼ 746 (800-1¼)	1320-2¼ 786 (800-2¼)	1380-2¾ 846 (900-2¾)
FEBOB FIX MINIMUMS				
S-19	1080-1 546 (600-1)	1080-1½ 546 (600-1½)	1080-1¾ 546 (600-1¾)	
C CIRCLING	1140-1 606 (700-1)	1160-1 626 (700-1)	1320-2¼ 786 (800-2¼)	1380-2¾ 846 (900-2¾)



NE-1, 15 MAY 2025 to 12 JUN 2025

NE-1, 15 MAY 2025 to 12 JUN 2025