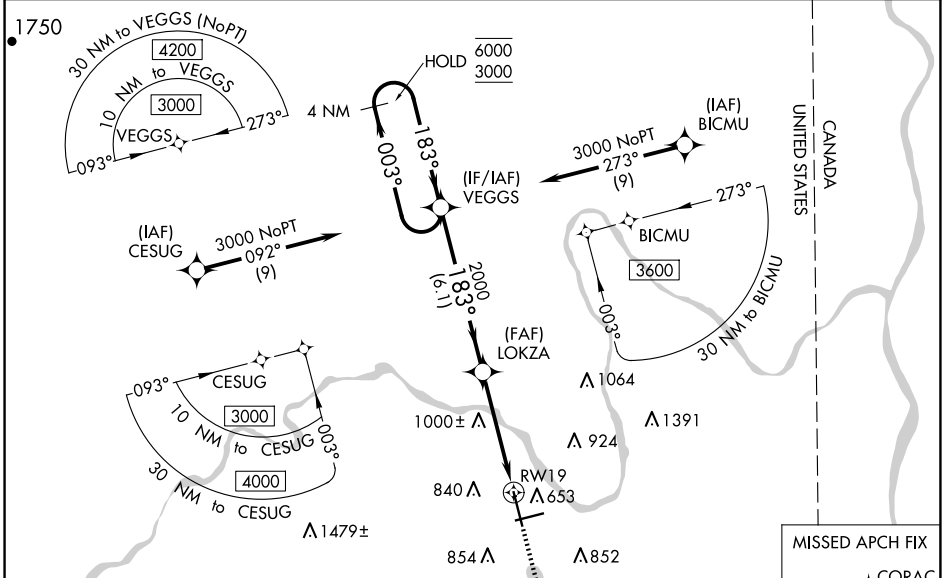


WAAS CH <b>99712</b> <b>W19A</b>	APP CRS <b>183°</b>	Rwy Idg TDZE Apt Elev	<b>7441</b> <b>534</b> <b>534</b>
--	------------------------	-----------------------------	---

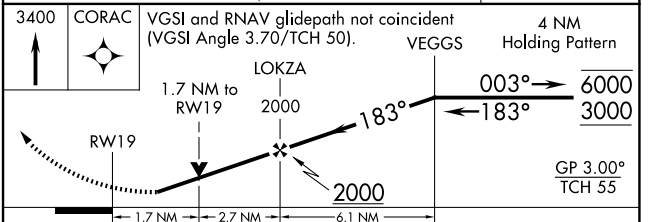
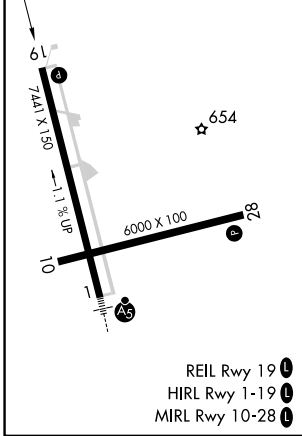
# RNAV (GPS) RWY 19

PRESQUE ISLE INTL (PQI)

RNP APCH - GPS				MISSED APPROACH: Climb to 3400 direct CORAC and hold.
<p>Rwy 19 helicopter visibility reduction below 3/4 SM NA. For uncompensated Baro-VNAV systems, LNAV/VNAV NA below -16°C or above 54°C. Circling Rwy 10 NA at night. When local altimeter setting not received, use HUL altimeter setting: increase LPV DA to 1019 feet and all visibilities 1/4 SM; increase LNAV/VNAV DA to 1205 feet and all visibilities 1/8 SM; increase all MDAs 100 feet and LNAV visibility Cats B, C, and D 1/2 SM, and Circling visibility Cats B and C 1/2 SM and Cat D 1/4 SM. Baro-VNAV and VDP NA when using HUL altimeter setting.</p>				
AWOS-3PT <b>118.025</b>	BOSTON CENTER <b>124.75 239.05</b>	CLNC DEL <b>121.6</b>	UNICOM <b>122.8 (CTAF)</b>	<b>122.6</b>



ELEV 534	<b>D</b>	TDZE 534
----------	----------	----------



CATEGORY	A	B	C	D
LPV DA	929-1 1/8		395 (400-1 1/8)	
LNAV/VNAV DA	1115-1 3/4		581 (600-1 3/4)	
LNAV MDA	1240-1 706 (800-1)		1240-2 706 (800-2)	
CIRCLING	1240-1 706 (800-1)		1320-2 1/4 786 (800-2 1/4) 1380-2 3/4 846 (900-2 3/4)	

NE-1, 15 MAY 2025 to 12 JUN 2025

NE-1, 15 MAY 2025 to 12 JUN 2025