

| | | | |
|--|------------------------|-----------------------------|---|
| WAAS CH 77740 W15A | APP CRS 148° | Rwy Idg TDZE Apt Elev | 4000 270 270 |
|--|------------------------|-----------------------------|---|

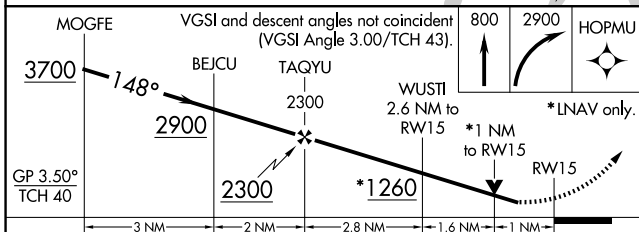
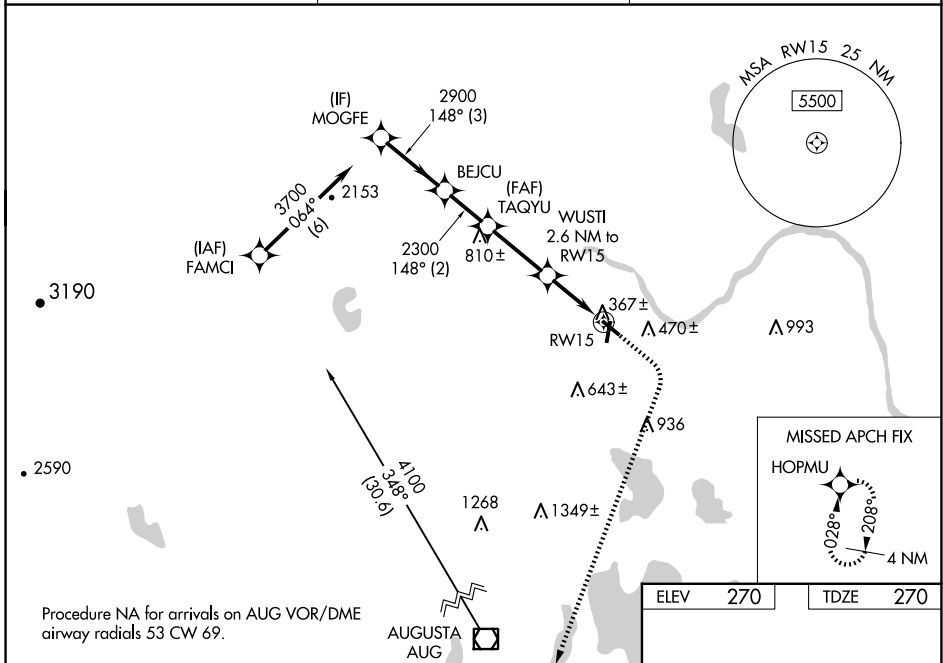
RNAV (GPS) RWY 15

CENTRAL MAINE/NORRIDGEWOCK (OWK)

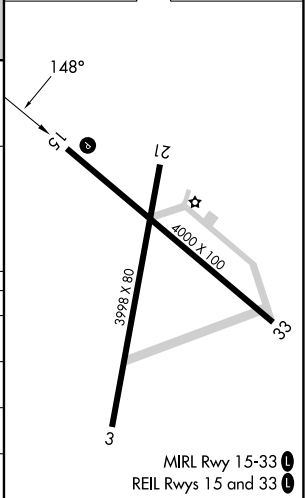
▽ For uncompensated Baro-VNAV systems, LNAV/VNAV NA below -15°C (5°F) or above 54°C (130°F). Baro-VNAV and VDP NA when using Augusta State altimeter setting.
△ NA Rwy 15 helicopter visibility reduction below 3/4 SM NA. DME/DME RNP-0.3 NA.
 When local altimeter setting not received, use Augusta State altimeter setting: increase LPV DA to 607 feet, LNAV/VNAV DA 659 feet and LNAV/VNAV visibility all Cats 1/2 SM. Increase all MDA 80 feet and LNAV Cat C visibility 1/4 SM and Circling Cat C visibility 1/2 SM. Circling Rwy 3, 21, 33 NA at night.

MISSED APPROACH:
 Climb to 800 then climbing right turn to 2900 direct HOPMU and hold.

| | | |
|---------------------------|---|---------------------------------|
| AWOS-AV 123.075 | PORTLAND APP CON ★ 128.35 299.2 | UNICOM 122.8 (CTAF) 0 |
|---------------------------|---|---------------------------------|



| | |
|----------|----------|
| ELEV 270 | TDZE 270 |
|----------|----------|



| CATEGORY | A | B | C | D |
|-------------------|----------------------|----------------------|-------------------------------|----|
| LPV DA | 540-1 | 270 (300-1) | | NA |
| LNAV/VNAV DA | 592-1 | 322 (400-1) | | NA |
| LNAV MDA | 680-1 | 410 (500-1) | 680-1 1/8 410 (500-1 1/8) | NA |
| C CIRCLING | 800-1 530 (600-1) | 960-1 690 (700-1) | 1080-2 1/4 810 (900-2 1/4) | NA |

NE-1, 15 MAY 2025 to 12 JUN 2025

NE-1, 15 MAY 2025 to 12 JUN 2025

MIRL Rwy 15-33
 REIL Rws 15 and 33