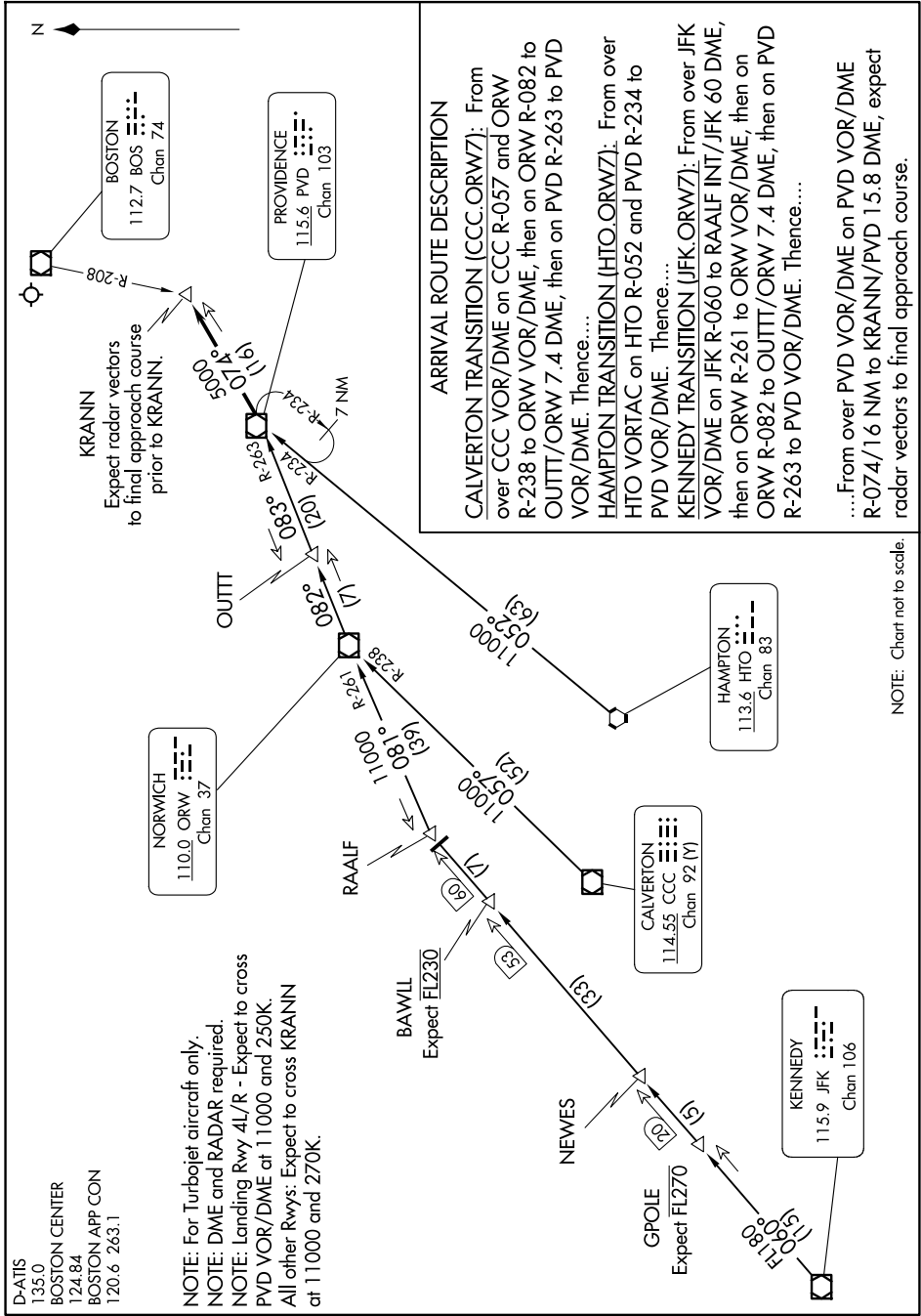


NORWICH SEVEN ARRIVAL

NE-1, 15 MAY 2025 to 12 JUN 2025



D-ATIS
135.0
BOSTON CENTER
124.84
BOSTON APP CON
120.6 263.1

NOTE: For Turbojet aircraft only.
NOTE: DME and RADAR required.
NOTE: Landing Rwy 4L/R - Expect to cross PVD VOR/DME at 11000 and 250K.
All other Rwys: Expect to cross KRANN at 11000 and 270K.

NOTE: Chart not to scale.

NE-1, 15 MAY 2025 to 12 JUN 2025