

APP CRS	Rwy Idg	N/A
<b>051°</b>	TDZE	N/A
	Apt Elev	<b>733</b>

# RNAV (GPS)-A

MORRISVILLE-STOWE STATE (MVL)

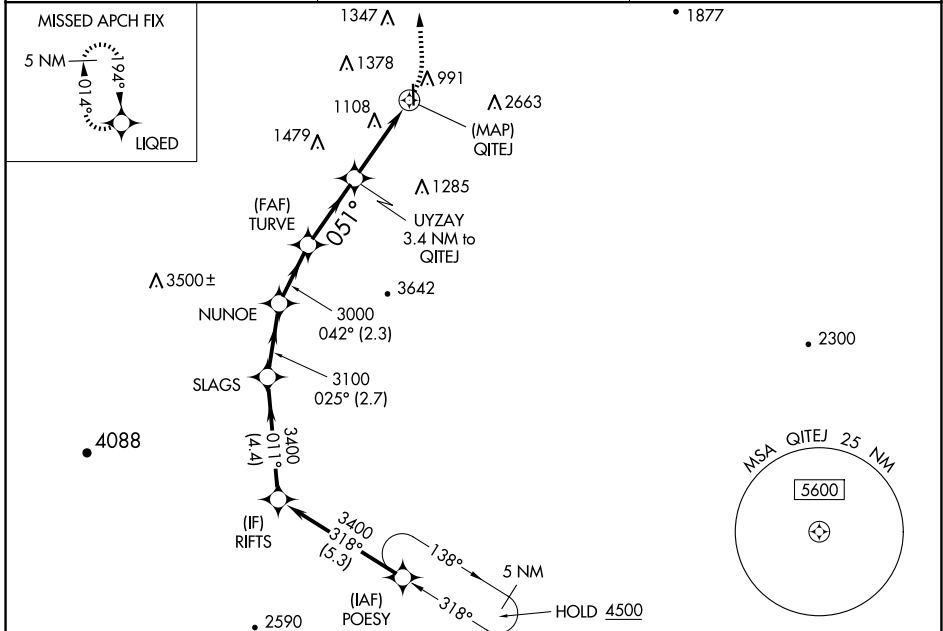
RNP APCH.

**⚠** Circling NA for Cat C east of Rwy 1-19. When local altimeter setting not received, use Burlington altimeter setting and increase all MDAs 120 feet.

**⚠** -19°C

MISSED APPROACH: Climbing left turn to 5600 direct LIQED and hold, continue climb-in-hold to 5600.

ASOS	BOSTON CENTER	UNICOM
<b>135.625</b>	<b>135.7 282.2</b>	<b>122.8 (CTAF) 0</b>



ELEV 733

4083  
• 4083

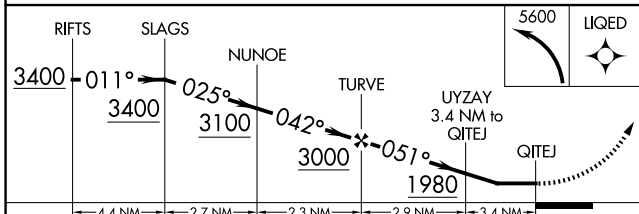
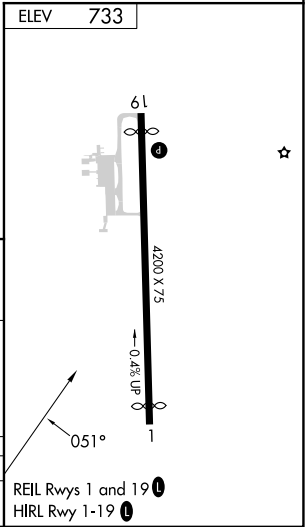
• 2920

Procedure NA for arrival on MPV VOR/DME airway radials 317 CW 037.

MONTPELIER MPV

4500  
338°  
(17.2)

5600 LIQED



CATEGORY	A	B	C	D
<b>C</b> CIRCLING	1620-1¼ 887 (900-1¼)	1780-1½ 1047 (1100-1½)	1980-3 1247 (1300-3)	NA

NE-1, 15 MAY 2025 to 12 JUN 2025

NE-1, 15 MAY 2025 to 12 JUN 2025