

WAAS CH <b>78019</b> <b>W22A</b>	APP CRS <b>221°</b>	Rwy Idg TDZE Apt Elev	<b>5001</b> <b>270</b> <b>288</b>
--	------------------------	-----------------------------	---

# RNAV (GPS) RWY 22

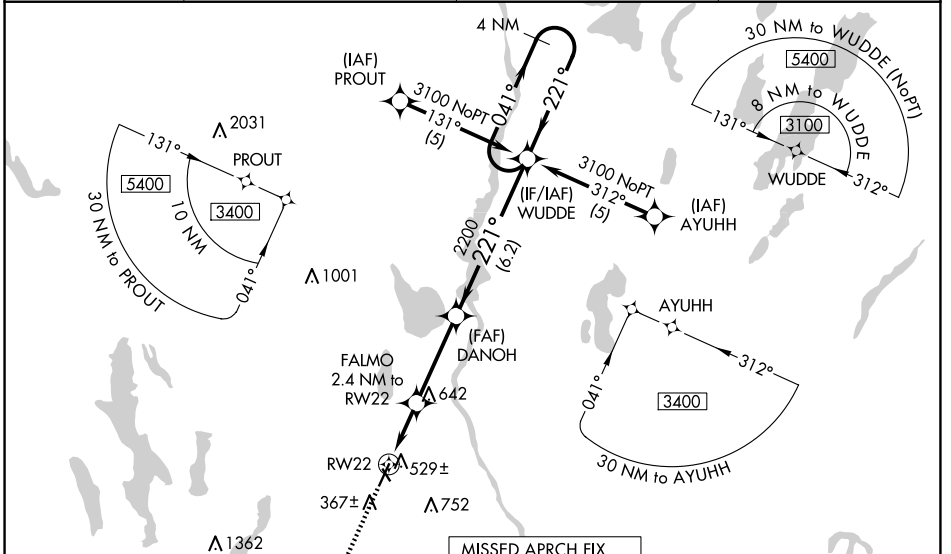
AUBURN/LEWISTON MUNI (LEW)

**RNP APCH.**

**⚠** Procedure NA at night. For uncompensated Baro-VNAV systems, LNAV/VNAV NA below -15°C or above 48°C. Rwy 22 helicopter visibility reduction below 1 SM NA. When local altimeter setting not received, use Augusta altimeter setting: increase LPV all Cats DA to 617 feet and all Cats visibility ½ SM; LNAV/VNAV all Cats DA to 938 feet and all Cats visibility ½ SM; increase all MDA 80 feet and LNAV Cat C/D visibility ½ SM. Baro-VNAV NA when using Augusta altimeter setting.

**MISSED APPROACH:** Climb to 3100 direct AUBIN and hold.

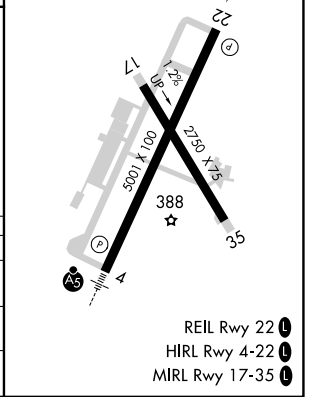
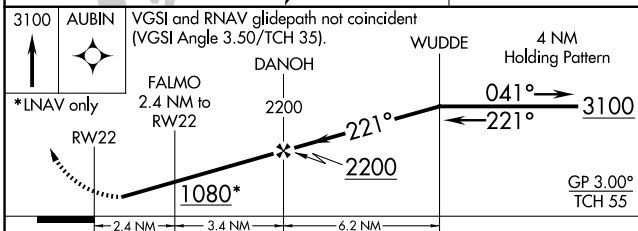
AWOS-3PT <b>118.025</b>	PORTLAND APP CON ★ <b>125.5 353.9</b>	CLNC DEL <b>124.05</b>	UNICOM <b>122.8 (CTAF) 0</b>
----------------------------	--	---------------------------	---------------------------------



NE-1, 15 MAY 2025 to 12 JUN 2025

NE-1, 15 MAY 2025 to 12 JUN 2025

ELEV 288	TDZE 270
----------	----------



CATEGORY	A	B	C	D
LPV DA		546-1	276 (300-1)	
LNAV/VNAV DA		867-2	597 (600-2)	
LNAV MDA	780-1	510 (500-1)	780-1 3/8	510 (500-1 3/8)

- REIL Rwy 22 0
- HIRL Rwy 4-22 0
- MIRL Rwy 17-35 0