

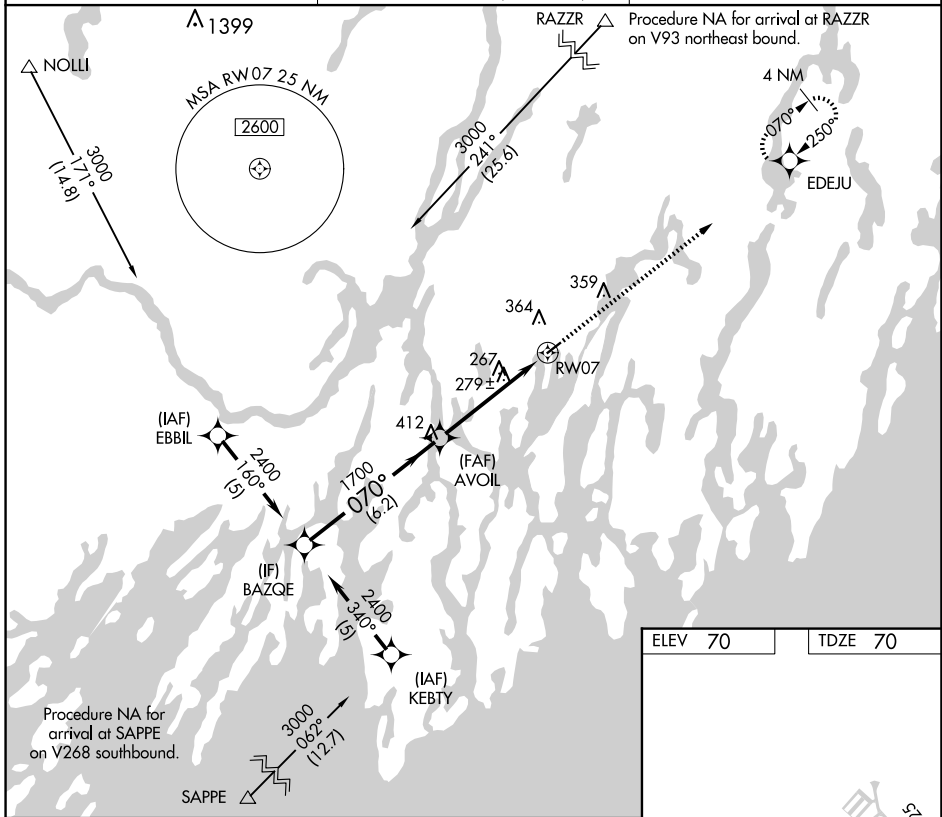
| | | |
|-------------|----------|-------------|
| APP CRS | Rwy Idg | 3397 |
| 070° | TDZE | 70 |
| | Apt Elev | 70 |

RNAV (GPS) RWY 7

WISCASSET (IWI)

| | | |
|-----------|---|--|
| RNP APCH. | <p>Procedure NA at night. Rwy 7 helicopter visibility reduction below 1 SM NA. When local altimeter setting not received use Rockland altimeter setting and increase all MDA 80 feet.</p> | <p>MISSED APPROACH: Climb to 3000 direct EDEJU and hold.</p> |
|-----------|---|--|

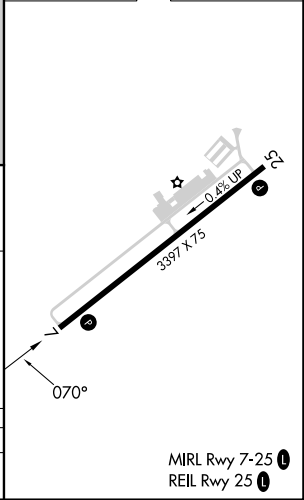
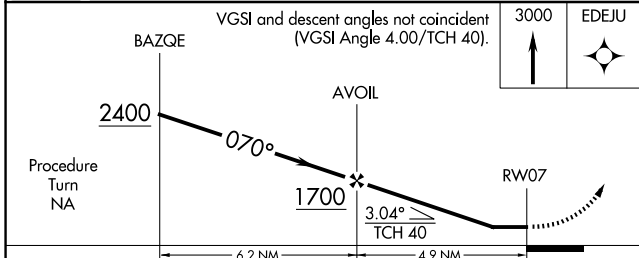
| | | |
|------------------------|--|--|
| ASOS 135.725 | PORTLAND APP CON★ 119.75 269.35 (112° -292°) 120.4 299.2 (293°-111°) | UNICOM 122.8 (CTAF) 0 |
|------------------------|--|--|



NE-1, 15 MAY 2025 to 12 JUN 2025

NE-1, 15 MAY 2025 to 12 JUN 2025

| | |
|---------|---------|
| ELEV 70 | TDZE 70 |
|---------|---------|



| | | | | |
|----------|-------|-------------|---|----|
| CATEGORY | A | B | C | D |
| LNAV MDA | 560-1 | 490 (500-1) | | NA |

MIRL Rwy 7-25 **0**
REL Rwy 25 **0**