

WAAS CH <b>53512</b> <b>W10A</b>	APP CRS <b>104°</b>	Rwy Idg TDZE Apt Elev	<b>4001</b> <b>1057</b> <b>1074</b>
--	------------------------	-----------------------------	---

# RNAV (GPS) Z RWY 10

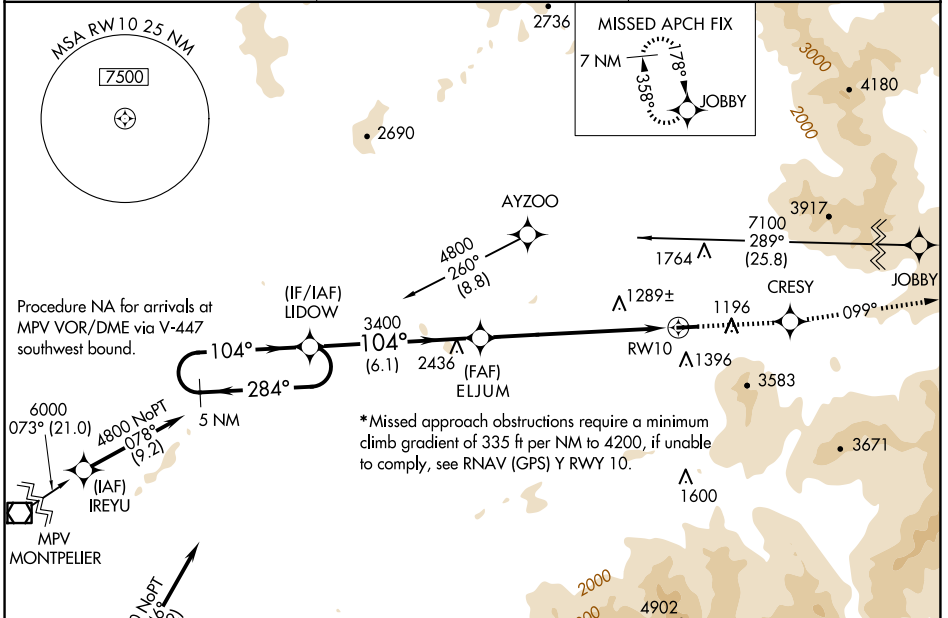
MOUNT WASHINGTON RGNL (HIE)

**⚠** DME/DME RNP-0.3 NA. Visibility reduction by helicopters NA. When local altimeter setting not received, use Lyndonville altimeter setting and increase DA 71 feet and LPV all Cats visibility 1/2 mile.

**⚠** MISSED APPROACH: Climb to 7100 direct CRESY and via track 099° to JOBBY and hold, continue climb-in-hold to 7100.

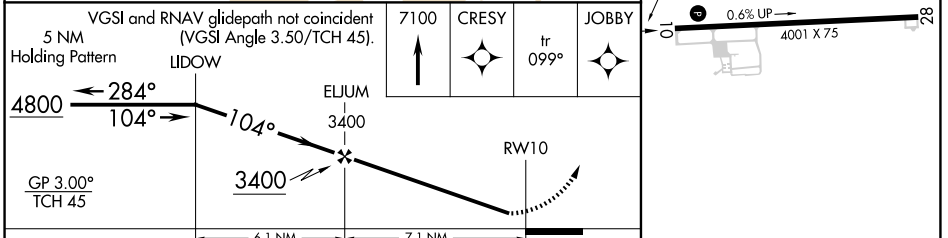
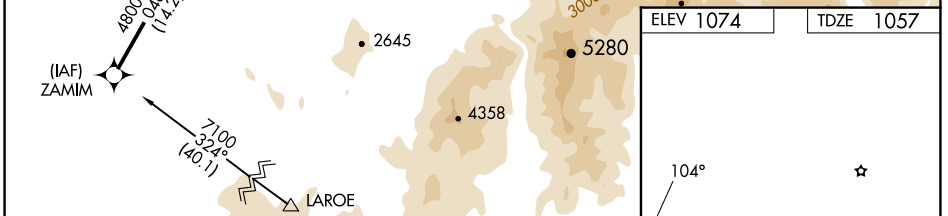
**❄** -29°C

ASOS <b>118.525</b>	BOSTON CENTER <b>135.7 282.2</b>	UNICOM <b>122.8 (CTAF) ①</b>
------------------------	-------------------------------------	---------------------------------



NE-1, 15 MAY 2025 to 12 JUN 2025

NE-1, 15 MAY 2025 to 12 JUN 2025



CATEGORY	A	B	C	D
*LPV DA	1507-1 1/2 450 (500-1 1/2)			NA

ELEV 1074	TDZE 1057
-----------	-----------

REIL Rwy 10 and 28 ①  
MIRL Rwy 10-28 ①