

APP CRS 104°	Rwy Idg TDZE Apt Elev	4001 1057 1072
------------------------	-----------------------------	---

RNAV (GPS) Y RWY 10

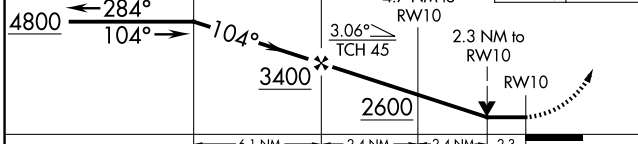
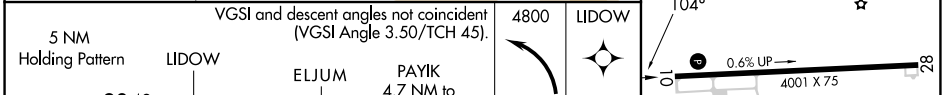
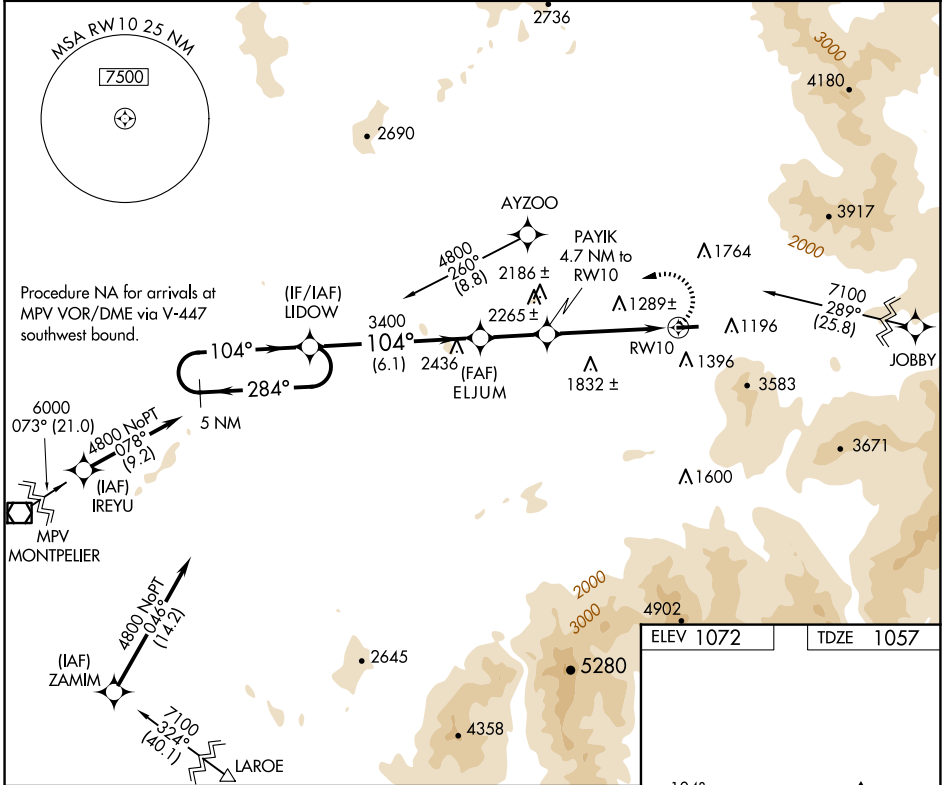
MOUNT WASHINGTON RGNL (HIE)

▼ Circling NA south of Rwy 10-28. DME/DME RNP-0.3 NA. Visibility reduction by helicopters NA. When local altimeter setting not received, use Lyndonville altimeter setting and increase all MDA 80 feet; increase LNAV and Circling Cat B/C visibilities ¼ mile. VDP NA with Lyndonville altimeter setting. Circling to Rwy 28 NA at night.

▲ MISSED APPROACH: Climbing left turn to 4800 direct LIDOW and hold.

❄️ -29°C

ASOS 118.525	BOSTON CENTER 135.7 282.2	UNICOM 122.8 (CTAF) 0
------------------------	-------------------------------------	---------------------------------



CATEGORY	A	B	C	D
LNAV MDA	1940-1¼	883 (900-1¼)	1940-2¾ 883 (900-2¾)	NA
CIRCLING	1940-1¼	868 (900-1¼)	1980-2¾ 908 (1000-2¾)	NA

ELEV 1072	TDZE 1057
-----------	-----------

REIL Rwy 10 and 28 0

MIRL Rwy 10-28 0

NE-1, 15 MAY 2025 to 12 JUN 2025

NE-1, 15 MAY 2025 to 12 JUN 2025