

LOC I-HFD 109.7	APP CRS 002°	Rwy Idg TDZE Apt Elev	4006 17 18
---------------------------	------------------------	-----------------------------	---------------------------------------

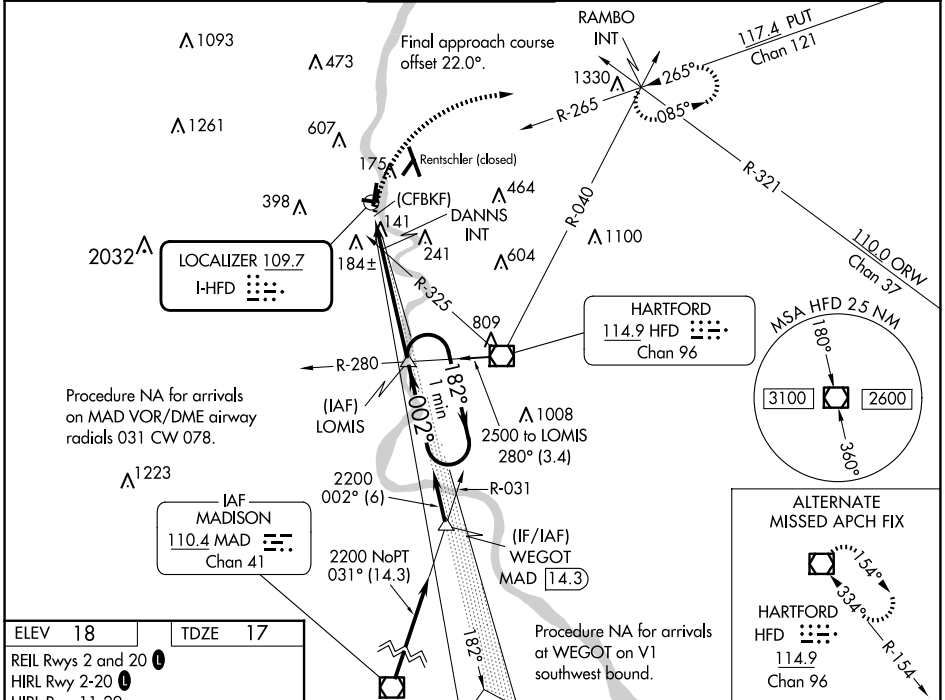
LDA RWY 2

HARTFORD-BRAINARD (HFD)

▼ Helicopter visibility reduction below 1 SM NA. Night landing: Rwy 11, 20, 29 NA. Night landing: Rwy 2 operational VGSI required, remain on or above VGSI glidepath until threshold.

MISSED APPROACH: Climbing right turn to 2500 on heading 090° and PUT VOR/DME R-265 to RAMBO INT and hold.

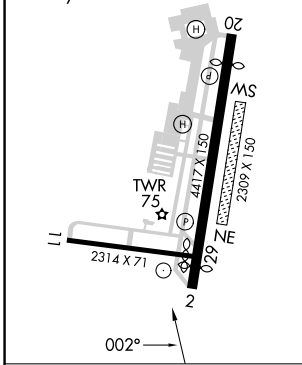
ATIS 126.45	BRADLEY APP CON 127.8 269.325	BRAINARD TOWER * 119.6 (CTAF) 0 248.2	GND CON 121.6	CLNC DEL 121.6	UNICOM 122.95
-----------------------	---	--	-------------------------	--------------------------	-------------------------



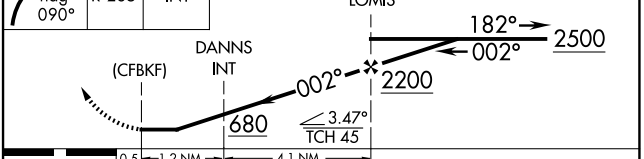
NE-1, 15 MAY 2025 to 12 JUN 2025

NE-1, 15 MAY 2025 to 12 JUN 2025

ELEV 18	TDZE 17
REIL Rws 2 and 20	
HIRL Rwy 2-20	
HIRL Rwy 11-29	



2500 PUT R-265 RAMBO INT VGSI and descent angles not coincident (VGSI Angle 4.00/TCH 42). One Minute Holding Pattern



CATEGORY	A	B	C	D
S-2	680-1	663 (700-1)	680-1 7/8	663 (700-1 7/8)
CIRCLING	680-1 662 (700-1)	900-1 1/4 882 (900-1 1/4)	920-2 3/4 902 (1000-2 3/4)	920-3 902 (1000-3)
DANNIS FIX MINIMUMS (DUAL VOR RECEIVERS REQUIRED)				
S-2	460-1	443 (500-1)	460-1 3/8	443 (500-1 3/8)
CIRCLING	580-1 562 (600-1)	900-1 1/4 882 (900-1 1/4)	920-2 3/4 902 (1000-2 3/4)	920-3 902 (1000-3)

FAF to MAP 5.3 NM					
Knots	60	90	120	150	180
Min:Sec	5:18	3:32	2:39	2:07	1:46